



**FITTING INSTRUCTIONS FOR AB0088BK**  
**ADVENTURE BARS**



**THIS KIT CONTAINS THE ITEMS PICTURED AND LABELLED OVER PAGE.**

SOME PARTS MAY BE SHOWN FOR CLARITY OF INSTRUCTIONS ONLY.

DO NOT PROCEED UNTIL YOU ARE SURE ALL PARTS ARE PRESENT.

**PLEASE READ ALL INSTRUCTIONS BEFORE PROCEEDING.**

**IF IN ANY DOUBT WHEN FITTING OUR PRODUCTS, CONSULT ONE OF OUR DEALERS OR  
HAVE FITTED BY A QUALIFIED TECHNICIAN.**

PLEASE NOTE THAT THE WAY THE KIT IS PACKED DOES NOT NECESSARILY REPRESENT THE WAY OF  
MOUNTING TO THE BIKE.

IN THE EVENT OF RUBBER WASHERS BEING USED TO HOLD COMPONENTS ONTO BOLTS,  
THESE RUBBER WASHERS CAN BE THROWN AWAY.

**DIGITAL COPIES OF THESE INSTRUCTIONS ARE AVAILABLE TO DOWNLOAD FROM**

**[WWW.RG-RACING.COM](http://WWW.RG-RACING.COM)**

R&G

Unit 1, Shelley's Lane, East Worldham, Alton, Hampshire, GU34 3AQ

Tel: +44 (0)1420 89007 Fax: +44 (0)1420 87301 [www.rg-racing.com](http://www.rg-racing.com) Email: [info@rg-racing.com](mailto:info@rg-racing.com)

<b><u>TOOLS REQUIRED</u></b>	<b><u>GENERAL TORQUE SETTINGS</u></b>
<ul style="list-style-type: none"> <li>• METRIC SOCKET SET AND RATCHET</li> <li>• METRIC ALLEN KEY SET</li> <li>• 8, 10 AND 12mm SPANNER SET</li> <li>• TORQUE WRENCH</li> <li>• SUITABLE JACK WITH SOFT SUPPORT AREA (TO SUPPORT ENGINE WHILE MOUNTING BOLTS REMOVED).</li> </ul>	<p>M4 BOLT = 8Nm</p> <p>M5 BOLT = 12Nm</p> <p>M6 BOLT = 15Nm</p> <p>M8 BOLT = 20Nm</p> <p>M10 BOLT = 40Nm</p> <p>M12 BOLT = 40Nm</p>

### **LEGEND**

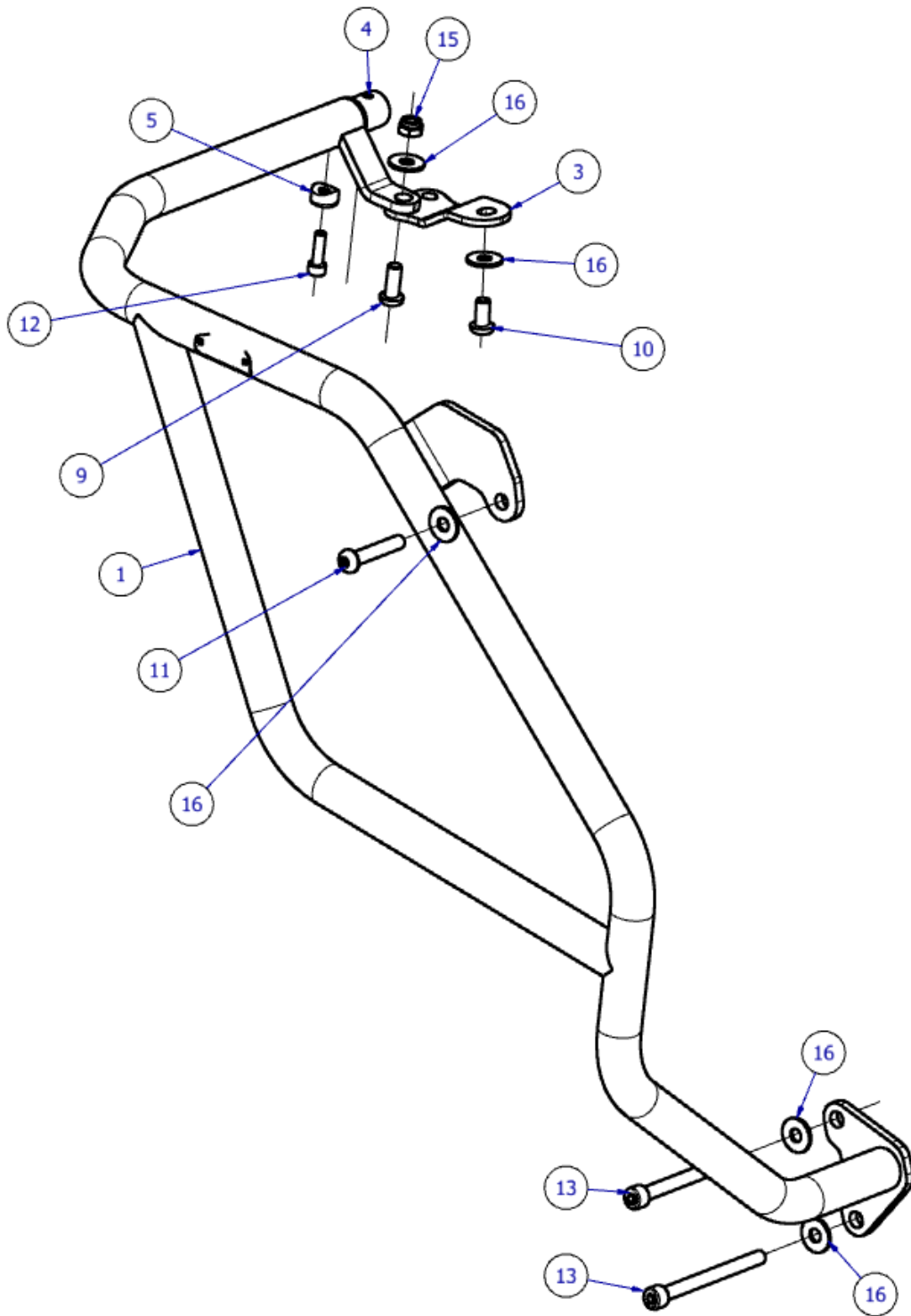
<b>ITEM NO.</b>	<b>DESCRIPTION</b>	<b>QTY</b>
ITEM 1	AB0088 LHS ADVENTURE BAR ASSEMBLY	1
ITEM 2	AB0088 RHS ADVENTURE BAR ASSEMBLY	1
ITEM 3	ABP0042 (MOUNTING PLATE)	1
ITEM 4	M0738 (ALUMINIUM TUBE LINK)	1
ITEM 5	S1275 (COUNTERBORED TUBE SPACER)	2
ITEM 6	NC0008 (M6 PLASSTIC FLAT CAP)	2
ITEM 7	NC0009 (M8 PLASTIC FLAT CAP)	2
ITEM 8	NC0012 (M8 DOMED NUT CAP)	4
ITEM 9	M8 x 1.25 x 20mm BUTTON HEAD	2
ITEM 10	M8 x 1.25 x 16mm BUTTON HEAD	1
ITEM 11	M8 x 1.25 x 45mm BUTTON HEAD	2
ITEM 12	M6 x 1.00 x 20mm CAP HEAD	2
ITEM 13	M8 x 1.25 x 90mm CAP HEAD	2
ITEM 14	S0847 (SPACER)	4
ITEM 15	M8 x 1.25 NYLOC NUT	2
ITEM 16	M8 x 19mm WASHER	9

R&G

Unit 1, Shelley's Lane, East Worldham, Alton, Hampshire, GU34 3AQ

Tel: +44 (0)1420 89007 Fax: +44 (0)1420 87301 [www.rg-racing.com](http://www.rg-racing.com) Email: [info@rg-racing.com](mailto:info@rg-racing.com)

**ASSEMBLY DIAGRAM – LHS**

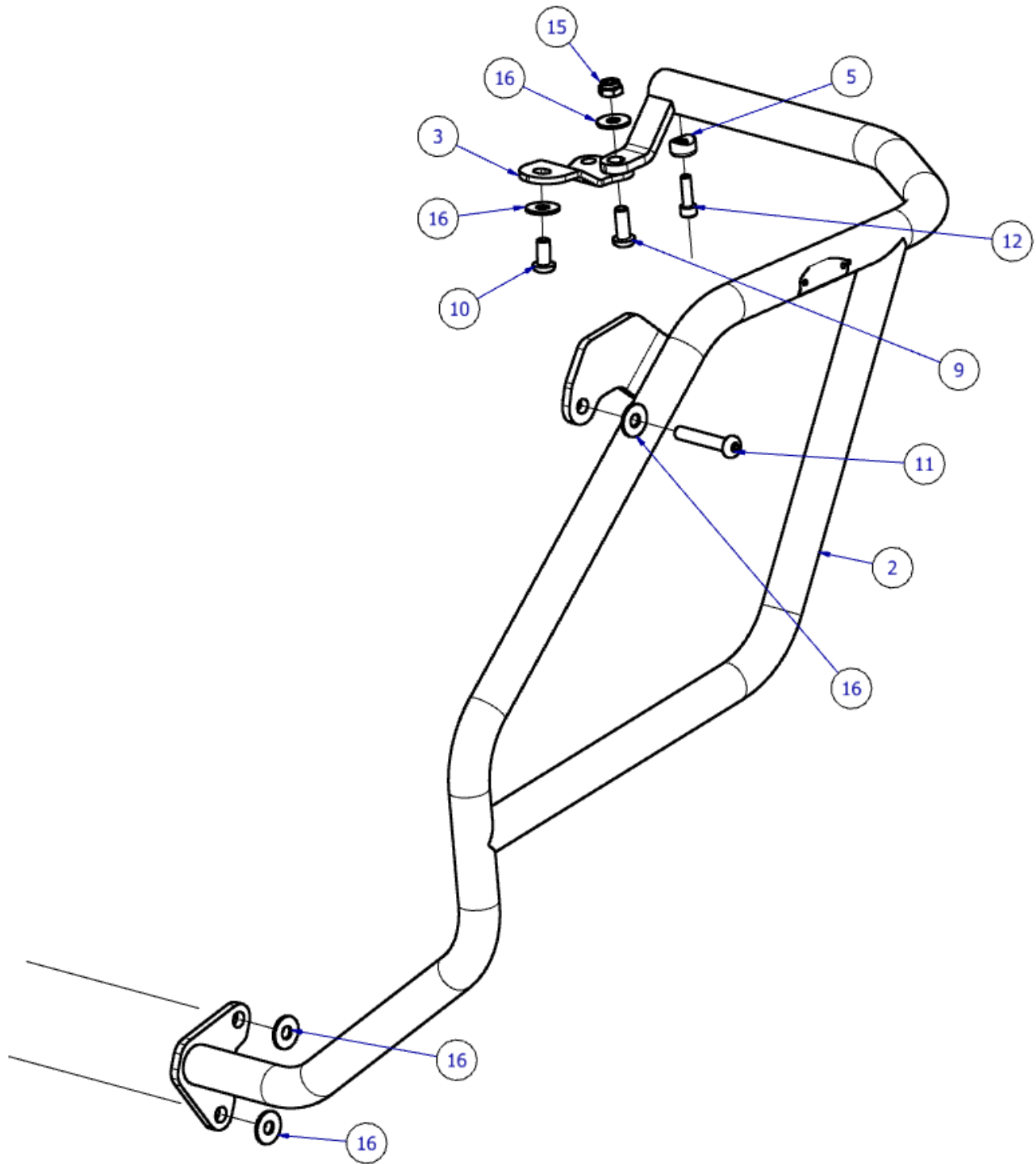


**ASSEMBLY DIAGRAM – RHS**

R&G

Unit 1, Shelley's Lane, East Worldham, Alton, Hampshire, GU34 3AQ

Tel: +44 (0)1420 89007 Fax: +44 (0)1420 87301 [www.rg-racing.com](http://www.rg-racing.com) Email: [info@rg-racing.com](mailto:info@rg-racing.com)



R&G

Unit 1, Shelley's Lane, East Worldham, Alton, Hampshire, GU34 3AQ

Tel: +44 (0)1420 89007 Fax: +44 (0)1420 87301 [www.rg-racing.com](http://www.rg-racing.com) Email: [info@rg-racing.com](mailto:info@rg-racing.com)

**FITTING PICTURES**



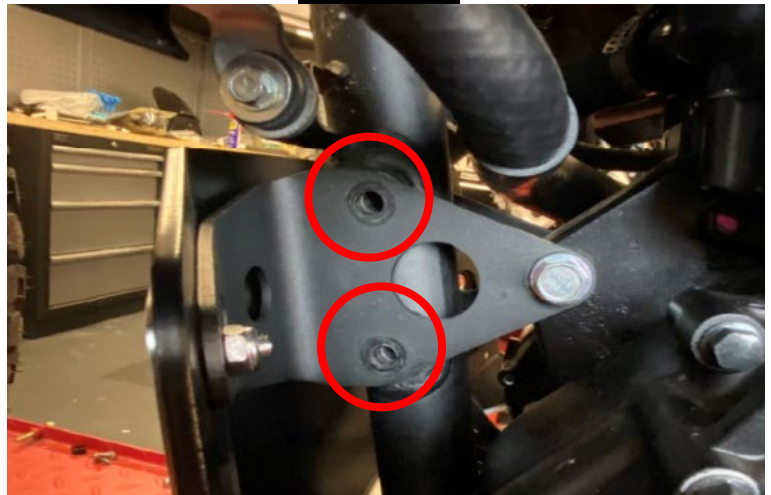
**Picture 1**



**Picture 2**



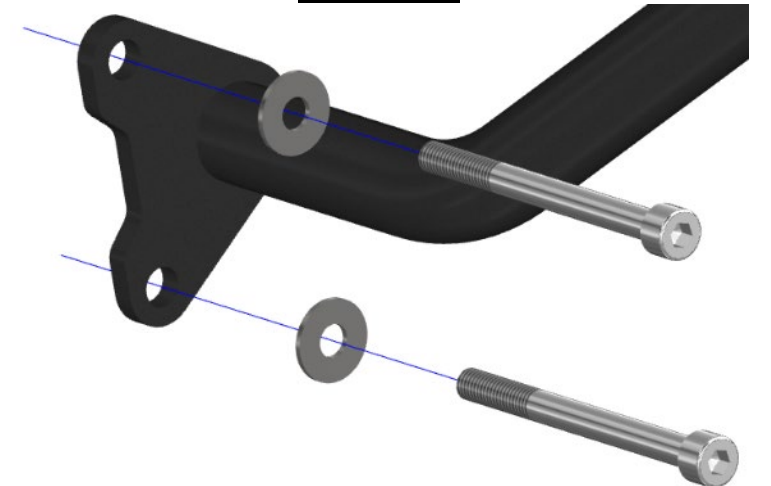
**Picture 3**



**Picture 4**



**Picture 5**



**Picture 6**



**Picture 7**



**Picture 8**



**Picture 9**



**Picture 10**

## **FITTING INSTRUCTIONS**

**PLEASE NOTE THAT BEFORE BEGINNING, YOU WILL NEED A SUITABLE JACK TO SUPPORT THE ENGINE WHEN REMOVING OEM ENGINE BOLTS. IF YOU ARE NOT COMFORTABLE CARRYING OUT THIS PROCEDURE, HAVE FITTED BY A QUALIFIED TECHNICIAN. READ ALL STEPS BEFORE PROCEEDING.**

- Stand the bike upright and place a jack underneath the engine in a central position and apply a light pressure to the underside of the engine, **NOT** the exhaust or coolant lines/hoses. Use a semi soft material (rubber/wood etc) to prevent any damage to the under-side of the engine.
- Firstly, remove the front mudguard for ease of installation.

***Please note:*** The bash plate may need to be removed for easier installation.

- Secure (**ITEM 3**) to the mount located underneath the headlight using (**ITEM 10**) and 1 x (**ITEM 16**) as shown in **Picture 1**.
- Remove the tank side pod by carefully popping out the plastic from the rubber mounted bungs behind as shown in **Picture 2**.
- Remove the bolt highlighted in **Picture 3**.
- Remove the 2 x OEM engine bolts highlighted in **Picture 4**.
- Begin assembling the LHS Adventure Bar assembly by inserting (**ITEM 4**) into the open end of the Adventure Bar and securing with 1 x (**ITEM 5**) and 1 x (**ITEM 12**), as shown in **Picture 5**.
- Insert the 2 x bolts (**ITEM 13**) and 2 x (**ITEM 16**) for the lower mount as shown in **Picture 6**, and offer up to the bike ensuring the 2 lower bolts go into the highlighted holes as shown in **Picture 4** and refer to **ASSEMBLY DIAGRAM – LHS** above.
- Once the lower mount bolts are protruding through the engine case and triangle mount on the RHS of the bike, you can secure the upper side mount as shown in **Picture 7**, using (**ITEM 11**) and 1 x (**ITEM 16**).
- Secure the mount at the front of the bike underneath the headlight using 1 x (**ITEM 9**) and 1 x (**ITEM 16**) as shown in **Picture 8**.
- To install the RHS Adventure Bar, present it to the bike and slide the 2 lower mount bolts through the holes and ensuring that (**ITEM 3**) enters the open end of the RHS bar. Refer to the **ASSEMBLY DIAGRAM – RHS**

R&G

Unit 1, Shelley's Lane, East Worldham, Alton, Hampshire, GU34 3AQ

Tel: +44 (0)1420 89007 Fax: +44 (0)1420 87301 [www.rg-racing.com](http://www.rg-racing.com) Email: [info@rg-racing.com](mailto:info@rg-racing.com)

- Secure the bottom mount using 2 x (**ITEM 16**) and re-use the OEM locking nuts which were removed previously.
- Use 1 x (**ITEM 5**) and 1 x (**ITEM 12**) to secure the bar link (**ITEM 4**).
- Secure the upper side mount using 1 x (**ITEM 11**) and 1 x (**ITEM 16**) as done for the LHS.
- Finally, Re-install the front mudguard but ensuring that 1 x (**ITEM 14**) is placed in between the front mudguard and the bike for each of the 4 bolts, as shown in Picture
- To protect the fastenings, we have provided 4 x nut caps for the 2 x M8 nyloc nuts under the headlight and also the re-used OEM locking nuts for the lower mount.
- M6 flat caps have been supplied for the 2 x M6 bolts linking the front tubes together.
- Lastly, use the remaining M8 flat caps in the lower engine mounts to ensure the hex head stays functional.
- Check all bolts are tight and that the Adventure Bar assembly is secure both sides before riding.
- Please refer to **Picture 10** for finished installation.

*It is advised you check the torque of the mounting bolts periodically, when cleaning or doing maintenance.*

**See more R&G products for your Motorcycle in the link below:**

[R&G Racing | All Products for Kawasaki - KLR 650 \(2022\) \(rg-racing.com\)](https://www.rg-racing.com)

ISSUE 2 - 13/01/2023 (AO)

#### **CONSUMER NOTICE**

The catalogue description and any exhibition of samples are only broad indications of the Products and R&G may make design changes which do not diminish their performance or visual appeal and supplying them in such state shall conform to the order. The Buyer acknowledges no representation or warranty (other than as to title) has been given or will apply to the Products other than those in R&G's order or confirmation and the Buyer confirms it has chosen the Products as being of merchantable quality and suitable for its particular purposes. Where R&G fits the Products or undertakes other services it shall exercise reasonable skill and care and rectify any fault free of charge unless the workmanship has been disturbed. The Buyer is responsible for ensuring that the warranty on the motorcycle is not affected by the fitting of the Products. On return of any defective Products R&G shall at its option either supply a replacement or refund the purchase money but shall not be liable if the Products have been modified or used or maintained otherwise than in accordance with R&G's or manufacturer's instructions and good engineering practice or if the defect arises from accident or neglect. Other than identified above and subject to R&G not limiting its liability for causing death and personal injury, it shall not be liable for indirect or consequential loss and otherwise its liability shall be limited to the amounts paid by the Buyer for the Products or the fitting or service concerned. These terms do not affect the Buyer's statutory rights.

#### **R&G RETURNS POLICY (NON-FAULTY GOODS)**

Returns must be pre-authorized (if not pre-authorized the return will be rejected). Goods may only be returned direct to us if they were purchased direct from us (customer must prove if necessary). Otherwise to be returned to original vendor. Goods must be in resellable condition, in the opinion of R&G. All returns are subject to a 25% restocking and handling fee (25% of the gross value exc.

R&G

Unit 1, Shelley's Lane, East Worldham, Alton, Hampshire, GU34 3AQ

Tel: +44 (0)1420 89007 Fax: +44 (0)1420 87301 [www.rg-racing.com](https://www.rg-racing.com) Email: [info@rg-racing.com](mailto:info@rg-racing.com)



P&P – at the prevailing price at time of purchase). The customer must pay any and all carriage charges. No returns of discontinued products, unless within 14 days of purchase. This policy does not affect your statutory rights and does not refer to faulty goods.

R&G

Unit 1, Shelley's Lane, East Worldham, Alton, Hampshire, GU34 3AQ

Tel: +44 (0)1420 89007 Fax: +44 (0)1420 87301 [www.rg-racing.com](http://www.rg-racing.com) Email: [info@rg-racing.com](mailto:info@rg-racing.com)

**NOTICE DE MONTAGE POUR  
BARRES AVENTURE**



**AB0088BK**



**CE KIT CONTIENT LES ARTICLES ILLUSTRES ET ETIQUETES SUR LA PAGE.**

CERTAINES PARTIES PEUVENT ETRE PRESENTES UNIQUEMENT POUR LA CLARTE DES INSTRUCTIONS.

NE PAS PROCEDER AU MONTAGE TANT QUE VOUS N'ETES PAS SUR QUE TOUTES LES PIECES SOIENT PRESENTES.

**VEUILLEZ LIRE TOUTES LES INSTRUCTIONS AVANT DE CONTINUER.**

**EN CAS DE DOUTE LORS DU MONTAGE DE NOS PRODUITS, CONSULTEZ UN DE NOS  
REVENDEURS OU FAITES APPEL A UN TECHNICIEN QUALIFIE.**

VEUILLEZ NOTER QUE LA FAÇON DONT LE KIT EST EMBALLE NE REPRESENTE PAS NECESSAIREMENT LA  
MANIERE DE LE MONTER SUR LA MOTO.

SI DES RONDELLES EN CAOUTCHOUC SONT UTILISEES POUR MAINTENIR LES COMPOSANTS SUR LES  
BOULONS, ELLES PEUVENT ETRE JETEES.

**NOTICE DISPONIBLE AU TELECHARGEMENT SUR :**  
[WWW.RG-RACING.COM](http://WWW.RG-RACING.COM)

<b><u>OUTILS REQUIS</u></b>	<b><u>VALEURS DE SERRAGE</u></b>
<ul style="list-style-type: none"> <li>• CLÉ À CLIQUET + DOUILLES</li> <li>• CLÉS ALLEN</li> <li>• CLÉ À MOLETTE 8, 10 ET 12mm</li> <li>• CLÉ DYNAMOMÉTRIQUE</li> <li>• PRISE AVEC ZONE DE SUPPORT SOUPLE (POUR SOUTENIR LE MOTEUR LORSQUE LES BOULONS DE MONTAGE SONT RETIRÉS).</li> </ul>	<p>M4 BOULON = 8Nm</p> <p>M5 BOULON = 12Nm</p> <p>M6 BOULON = 15Nm</p> <p>M8 BOULON = 20Nm</p> <p>M10 BOULON = 40Nm</p> <p>M12 BOULON = 40Nm</p>

### **LÉGENDE**

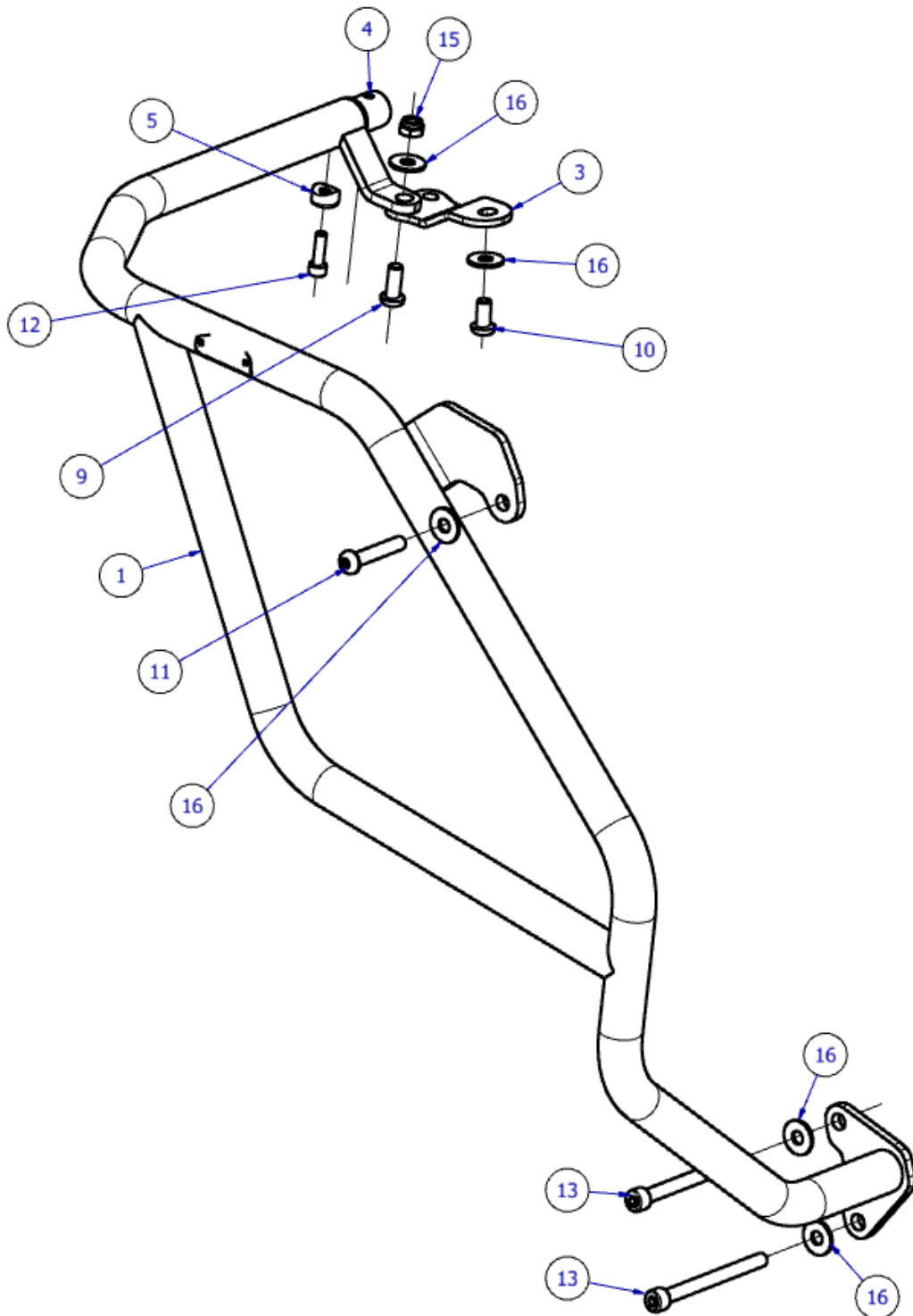
<b>ARTICLE NO.</b>	<b>DESCRIPTION</b>	<b>QTÉ</b>
ARTICLE 1	AB0088 ASSEMBLAGE DE BARRE AVENTURE CÔTÉ GAUCHE	1
ARTICLE 2	AB0088 ASSEMBLAGE DE BARRE AVENTURE CÔTÉ DROIT	1
ARTICLE 3	ABP0042 (PLAQUE DE MONTAGE)	1
ARTICLE 4	M0702 (LIAISON DE TUBE EN ALUMINIUM)	1
ARTICLE 5	S1275 (ENTRETOISE DE TUBE CONTRE-ALÉSÉE)	2
ARTICLE 6	NC0008 (M6 CAPUCHON PLAT)	2
ARTICLE 7	NC0009 (M8 CAPUCHON PLAT)	2
ARTICLE 8	NC0012 (M8 CAPUCHON D'ÉCROU)	4
ARTICLE 9	M8 x 1.25 x 20mm BOULON	2
ARTICLE 10	M8 x 1.25 x 16mm BOULON	1
ARTICLE 11	M8 x 1.25 x 45mm BOULON	2
ARTICLE 12	M6 x 1.00 x 20mm BOULON	2
ARTICLE 13	M8 x 1.25 x 90mm BOULON	2
ARTICLE 14	S0847 (ENTRETOISE)	4
ARTICLE 15	M8 x 1.25 ÉCROU	2
ARTICLE 16	M8 x 19mm RONDELLE	9

R&G

Unit 1, Shelley's Lane, East Worldham, Alton, Hampshire, GU34 3AQ

Tel: +44 (0)1420 89007 Fax: +44 (0)1420 87301 [www.rg-racing.com](http://www.rg-racing.com) Email: [info@rg-racing.com](mailto:info@rg-racing.com)

**SCHÉMA D'ENSEMBLE - CÔTÉ GAUCHE**

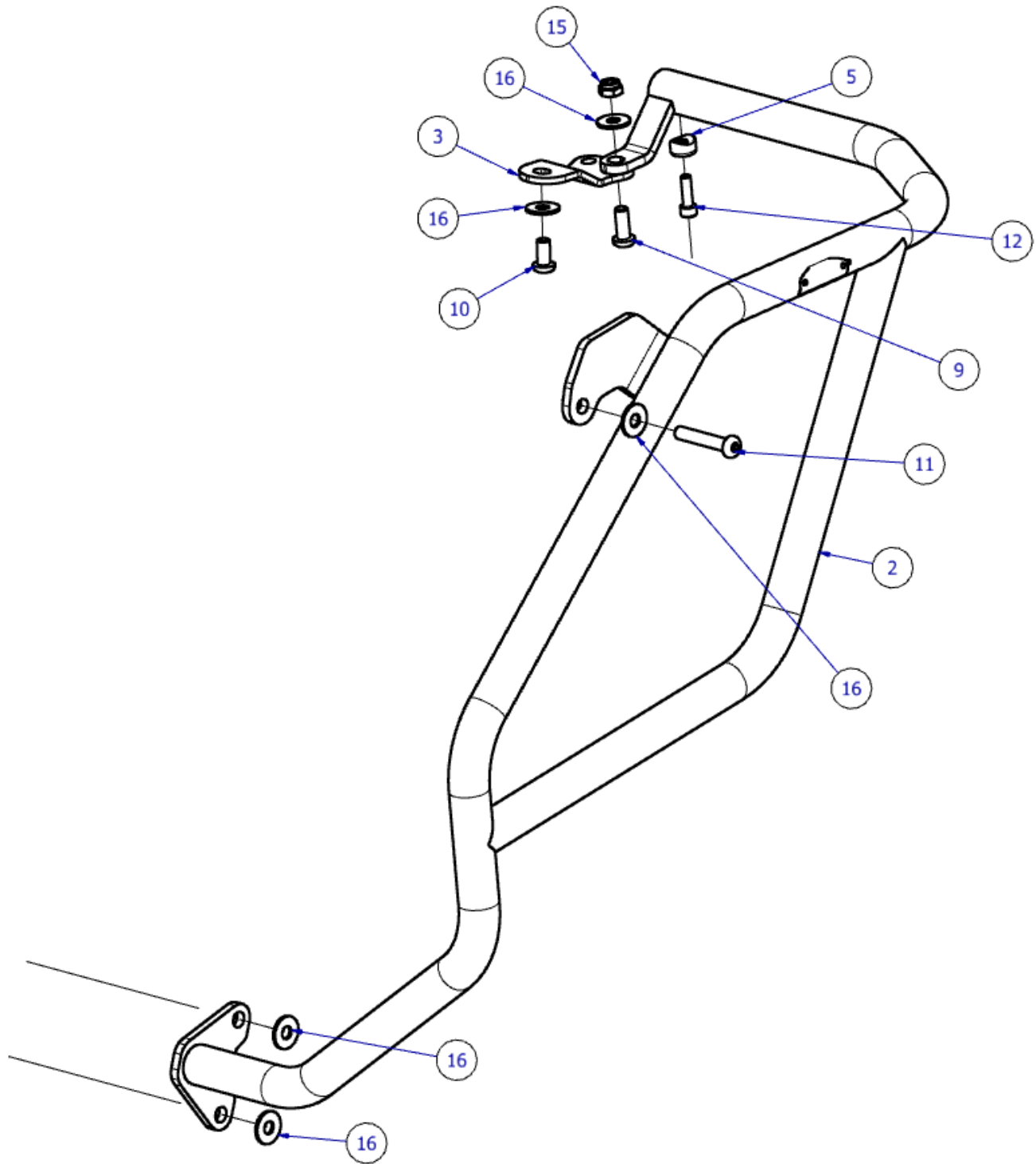


**SCHÉMA D'ENSEMBLE - CÔTÉ DROIT**

R&G

Unit 1, Shelley's Lane, East Worldham, Alton, Hampshire, GU34 3AQ

Tel: +44 (0)1420 89007 Fax: +44 (0)1420 87301 [www.rg-racing.com](http://www.rg-racing.com) Email: [info@rg-racing.com](mailto:info@rg-racing.com)



R&G

Unit 1, Shelley's Lane, East Worldham, Alton, Hampshire, GU34 3AQ

Tel: +44 (0)1420 89007 Fax: +44 (0)1420 87301 [www.rg-racing.com](http://www.rg-racing.com) Email: [info@rg-racing.com](mailto:info@rg-racing.com)

**PHOTOS DE MONTAGE**



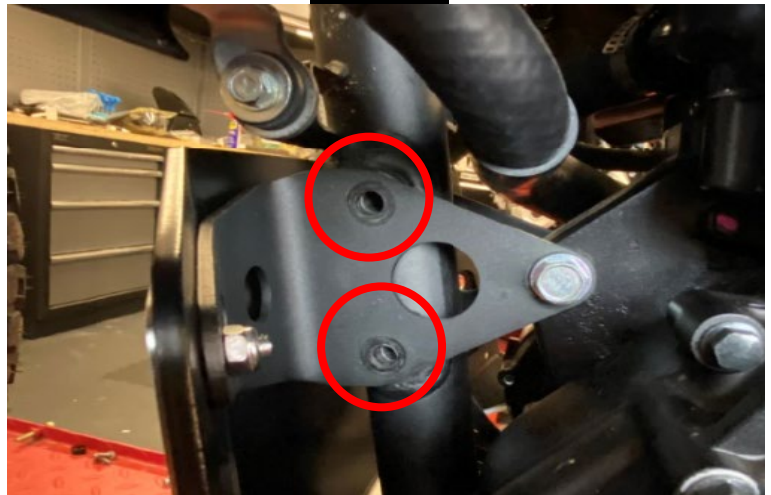
**Photo 1**



**Photo 2**



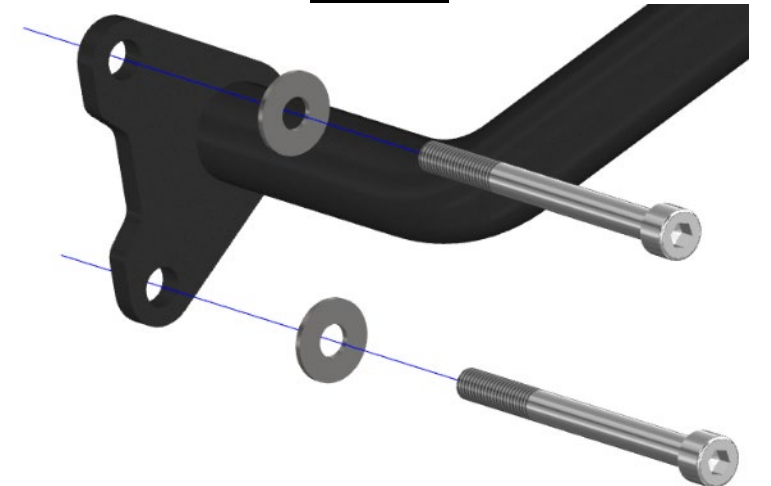
**Photo 3**



**Photo 4**



**Photo 5**



**Photo 6**



**Photo 7**



**Photo 8**



**Photo 9**



**Photo 10**

## **NOTICE DE MONTAGE**

**VEUILLEZ NOTER QU'AVANT DE COMMENCER, VOUS AUREZ BESOIN D'UN CRIC APPROPRIÉ POUR SOUTENIR LE MOTEUR LORSQUE VOUS ENLEVEZ LES BOULONS DU MOTEUR D'ORIGINE. SI VOUS N'ÊTES PAS À L'AISE POUR EFFECTUER CETTE MANOEUVRE, FAITES INSTALLER PAR UN TECHNICIEN QUALIFIÉ. LISEZ TOUTES LES ÉTAPES AVANT DE CONTINUER.**

- Redressez la moto et placez un cric sous le moteur dans une position centrale et appliquez une légère pression sur le dessous du moteur, PAS sur les conduits/tuyaux d'échappement ou de liquide de refroidissement. Utilisez un matériau semi-souple (caoutchouc/bois, etc.) pour éviter tout dommage au-dessous du moteur.
- Tout d'abord, retirez le garde-boue avant pour faciliter l'installation.
- Veuillez noter : la plaque de protection peut avoir besoin d'être retirée pour une installation plus facile.
- Fixez (ARTICLE 3) au support situé sous le phare à l'aide de (ARTICLE 10) et 1 x (ARTICLE 16) comme indiqué sur la Photo 1.
- Retirez le support latéral du réservoir en retirant soigneusement le plastique des bouchons montés en caoutchouc à l'arrière, comme indiqué sur la photo 2.
- Retirez le boulon mis en évidence sur la Photo 3.
- Retirez les 2 boulons de moteur d'origine mis en évidence sur la photo 4.
- Commencez à assembler la Barre Aventure côté gauche en l'insérant (ARTICLE 4) dans l'extrémité ouverte de la barre d'aventure et en fixant avec 1 x (ARTICLE 5) et 1 x (ARTICLE 12), comme indiqué sur la photo 5.
- Insérez les 2 x boulons (ARTICLE 13) et 2 x (ARTICLE 16) pour le support inférieur comme indiqué sur la photo 6, et présentez les sur la moto en vous assurant que les 2 boulons inférieurs entrent dans les trous mis en évidence comme indiqué sur la photo 4 et reportez-vous au SCHÉMA D'ASSEMBLAGE – CÔTÉ GAUCHE ci-dessus.
- Une fois que les boulons du support inférieur dépassent du carter moteur et du support triangulaire du côté droit de la moto, vous pouvez fixer le support latéral supérieur comme indiqué sur la photo 7, en utilisant (ARTICLE 11) et 1 x (ARTICLE 16).
- Fixez le support à l'avant de la moto sous le phare à l'aide de 1 x (ARTICLE 9) et 1 x (ARTICLE 16) comme indiqué sur la Photo 8.

R&G

Unit 1, Shelley's Lane, East Worldham, Alton, Hampshire, GU34 3AQ

Tel: +44 (0)1420 89007 Fax: +44 (0)1420 87301 [www.rg-racing.com](http://www.rg-racing.com) Email: [info@rg-racing.com](mailto:info@rg-racing.com)



- Pour installer la barre Aventure côté droit, présentez-la sur la moto et faites glisser les 2 boulons de montage inférieurs à travers les trous et assurez-vous que (ARTICLE 3) pénètre dans l'extrémité ouverte de la barre côté droit. Reportez-vous au SCHÉMA DE MONTAGE – CÔTÉ DROIT.
- Fixez le support inférieur à l'aide de 2 x (ARTICLE 16) et réutilisez les écrous de serrage d'origine qui ont été retirés précédemment.
- Utilisez 1 x (ARTICLE 5) et 1 x (ARTICLE 12) pour fixer le lien de la barre (ARTICLE 4).
- Fixez le support latéral supérieur en utilisant 1 x (ARTICLE 11) et 1 x (ARTICLE 16) comme pour le côté gauche.
- Enfin, réinstallez le garde-boue avant mais en vous assurant que 1 x (ARTICLE 14) soit placé entre le garde-boue avant et la moto pour chacun des 4 boulons, comme indiqué sur la photo.
- Pour protéger les fixations, nous avons fourni 4 cache-écrous pour les 2 écrous nyloc M8 sous le phare ainsi que les écrous de blocage d'origine réutilisés pour le support inférieur.
- Des capuchons plats M6 ont été fournis pour les 2 boulons M6 reliant les tubes avant ensemble.
- Enfin, utilisez les capuchons plats M8 restants dans les supports de moteur inférieurs pour vous assurer que la tête hexagonale reste fonctionnelle.
- Vérifiez que tous les boulons soient bien serrés et que l'ensemble de la barre Aventure soit bien fixée des deux côtés avant de rouler.
- Veuillez-vous référer à la photo 10 pour visualiser le résultat final.

*Il est conseillé de vérifier périodiquement le couple de serrage des boulons de montage, lors du nettoyage ou de la maintenance.*

**Voir plus de produits R&G pour votre moto via ce lien :**

[R&G Racing | All Products for Kawasaki - KLR 650 \(2022\) \(rg-racing.com\)](https://www.rg-racing.com)

ISSUE 1 - 06/01/2023 (AO)

#### CONSUMER NOTICE

The catalogue description and any exhibition of samples are only broad indications of the Products and R&G may make design changes which do not diminish their performance or visual appeal and supplying them in such state shall conform to the order. The Buyer acknowledges no representation or warranty (other than as to title) has been given or will apply to the Products other than those in R&G's order or confirmation and the Buyer confirms it has chosen the Products as being of merchantable quality and suitable for its

R&G

Unit 1, Shelley's Lane, East Worldham, Alton, Hampshire, GU34 3AQ

Tel: +44 (0)1420 89007 Fax: +44 (0)1420 87301 [www.rg-racing.com](https://www.rg-racing.com) Email: [info@rg-racing.com](mailto:info@rg-racing.com)

particular purposes. Where R&G fits the Products or undertakes other services it shall exercise reasonable skill and care and rectify any fault free of charge unless the workmanship has been disturbed. The Buyer is responsible for ensuring that the warranty on the motorcycle is not affected by the fitting of the Products. On return of any defective Products R&G shall at its option either supply a replacement or refund the purchase money but shall not be liable if the Products have been modified or used or maintained otherwise than in accordance with R&G's or manufacturer's instructions and good engineering practice or if the defect arises from accident or neglect. Other than identified above and subject to R&G not limiting its liability for causing death and personal injury, it shall not be liable for indirect or consequential loss and otherwise its liability shall be limited to the amounts paid by the Buyer for the Products or the fitting or service concerned. These terms do not affect the Buyer's statutory rights.

**R&G RETURNS POLICY (NON-FAULTY GOODS)**

Returns must be pre-authorized (if not pre-authorized the return will be rejected). Goods may only be returned direct to us if they were purchased direct from us (customer must prove if necessary). Otherwise to be returned to original vendor. Goods must be in resellable condition, in the opinion of R&G. All returns are subject to a 25% restocking and handling fee (25% of the gross value exc. P&P – at the prevailing price at time of purchase). The customer must pay any and all carriage charges. No returns of discontinued products, unless within 14 days of purchase. This policy does not affect your statutory rights and does not refer to faulty goods.

R&G

Unit 1, Shelley's Lane, East Worldham, Alton, Hampshire, GU34 3AQ

Tel: +44 (0)1420 89007 Fax: +44 (0)1420 87301 [www.rg-racing.com](http://www.rg-racing.com) Email: [info@rg-racing.com](mailto:info@rg-racing.com)