



FITTING INSTRUCTIONS FOR BP0017BK
BASH PLATE
KAWASAKI - KLR 650 2008-



THIS KIT CONTAINS THE ITEMS PICTURED AND LABELLED OVER PAGE.

SOME PARTS MAY BE SHOWN FOR CLARITY OF INSTRUCTIONS ONLY.

DO NOT PROCEED UNTIL YOU ARE SURE ALL PARTS ARE PRESENT.

PLEASE READ ALL INSTRUCTIONS BEFORE PROCEEDING.

**IF IN ANY DOUBT WHEN FITTING OUR PRODUCTS, CONSULT ONE OF OUR DEALERS
OR HAVE FITTED BY A QUALIFIED TECHNICIAN.**

PLEASE NOTE THAT THE WAY THE KIT IS PACKED DOES NOT NECESSARILY REPRESENT THE WAY OF
MOUNTING TO THE BIKE.

IN THE EVENT OF RUBBER WASHERS BEING USED TO HOLD COMPONENTS ONTO BOLTS,

THESE RUBBER WASHERS CAN BE THROWN AWAY.

DIGITAL COPIES OF THESE INSTRUCTIONS ARE AVAILABLE FROM:

WWW.RG-RACING.COM



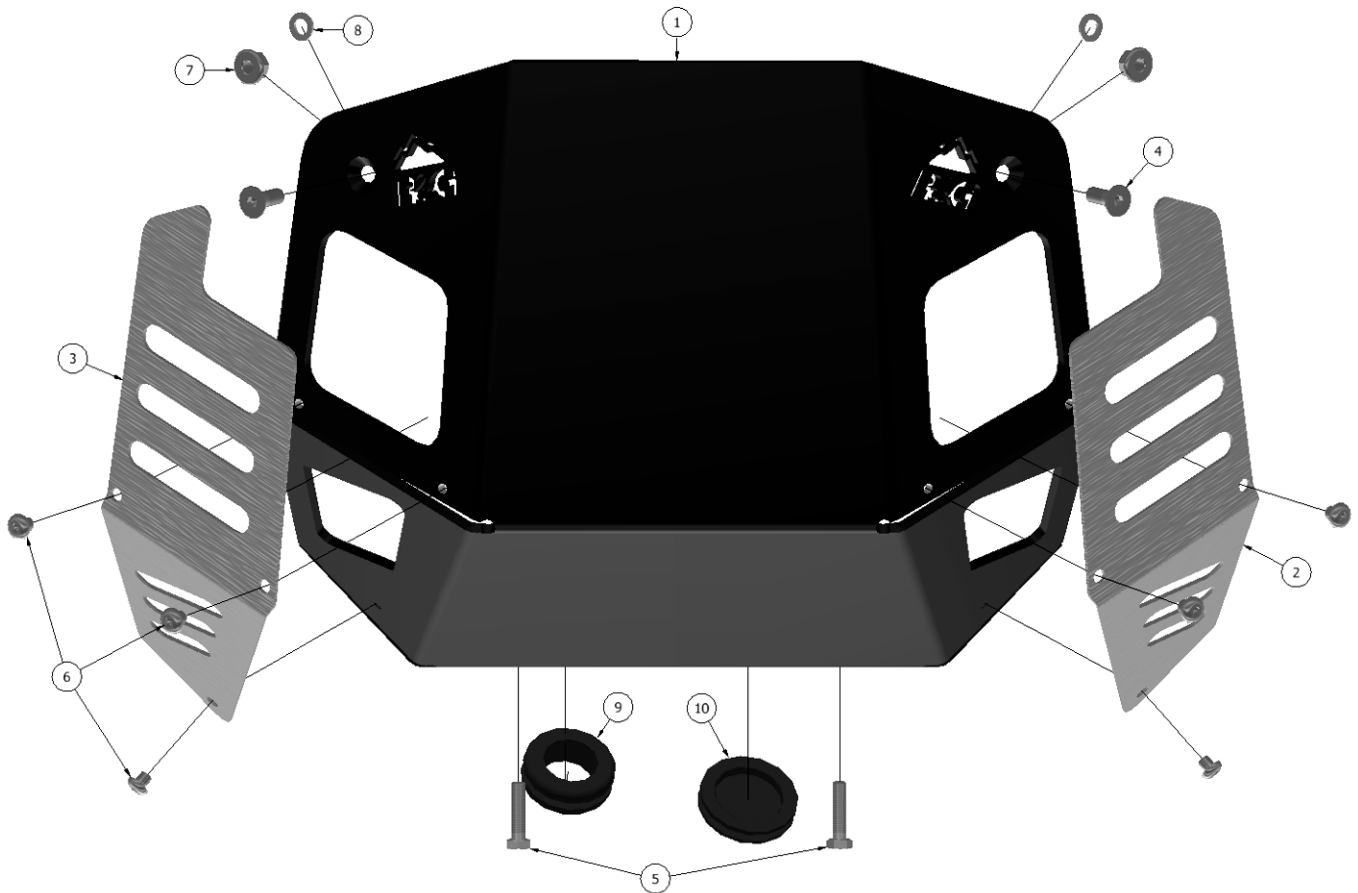
| <u>TOOLS REQUIRED</u> | <u>GENERAL TORQUE SETTINGS</u> |
|---|---|
| <ul style="list-style-type: none"> • 4mmA/F ALLEN TOOL • 10mm A/F SOCKET AND WRENCH | M4 BOLT = 8Nm M5 BOLT = 12Nm M6 BOLT = 15Nm M8 BOLT = 20Nm M10 BOLT = 40Nm M12 BOLT = 40Nm |

LEGEND

| ITEM NO. | DESCRIPTION | QTY |
|-----------------|--|------------|
| ITEM 1 | SMW0202 - BASH PLATE | 1 |
| ITEM 2 | SMW0203 - LHS COVER PLATE | 1 |
| ITEM 3 | SMW0204 - RHS COVER PLATE | 1 |
| ITEM 4 | M6 x 1.00 x 15mm - COUNTER SUNK BOLTS (UPPER MOUNTS) | 2 |
| ITEM 5 | M6 x 1.00 x 25mm - HEX HEAD BOLTS (LOWER MOUNTS) | 2 |
| ITEM 6 | M5 x 0.8 x 5mm - BUTTON HEAD BOLTS (COVER PLATES) | 6 |
| ITEM 7 | M6 x 1.00mm - NYLOC NUTS (UPPER MOUNTS) | 2 |
| ITEM 8 | M6 - FLAT WASHERS (LOWER MOUNTS) | 2 |
| ITEM 9 | RB0011 - HOLLOW RUBBER GROMMET (FOR OVER-FLOW LINES) | 1 |
| ITEM 10 | RB0012 - SOLID RUBBER GROMMET (FOR SUMP PLUG) | 1 |



EXPLODED ASSEMBLY

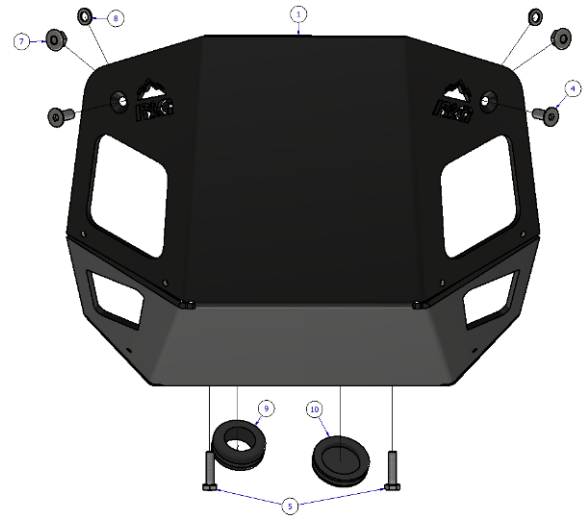




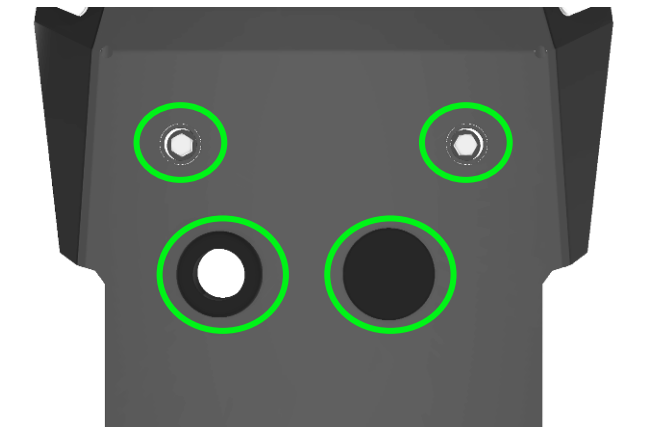
FITTING PICTURES



Picture 1



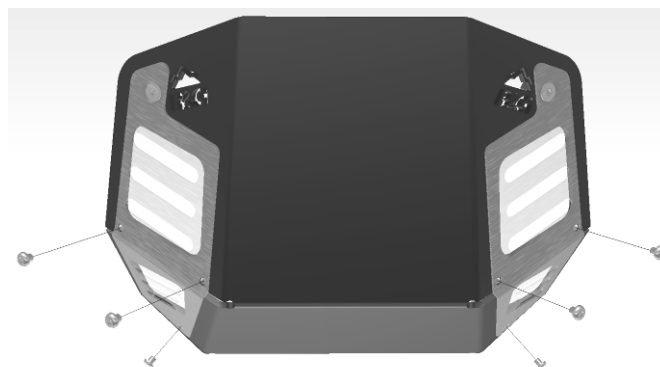
Picture 2



Picture 3



Picture 4



Picture 5



FITTING INSTRUCTIONS

- To fit the R&G bash plate, the original plate will need to be removed. Using a 10mm socket and wrench, remove the 4x bolts marked in **Picture 1**.
- Before starting, insert the rubber grommets (**Items 9 & 10**) into their positions (as shown in **Pictures 2 & 3**)
- Offer the bash plate up to the bike and using a 4mm Allen tool, loosely secure with the new 2x M6x15mm counter sunk bolts (**Item 4**) at the front of the bash plate by pushing them through the countersunk holes then through the OEM front mounts.

***PLEASE NOTE: The OEM front mounts may need to be loosened in order to align the bolts with their corresponding holes.
Before fitting, please apply thread lock to all fasteners.***

- Once the bolts have been pushed through the OEM brackets, the M6 nyloc nuts & flat washers (**Items 7 & 8**) can be applied loosely to the countersunk bolts.
Please ensure the two over-flow lines are not pinched during this process.
- Pass the over-flow lines through the hollow rubber grommet before tightening down.
- The M6x25mm hex head bolts (**Item 5**) can now be fitted to the lower mounting points located on the underside of the bash plate.
- Once all mounting bolts have been fitted, they can be fully tightened.
- Offer up the stainless-steel cover plates (**Items 2 & 3**) one by one and loosely fit the M5x5mm button head bolts (**Item 6**) to each mounting point.
- Once all cover plate bolts have been loosely fitted tighten down one at a time using a 4mm allen key.

ISSUE 1 – 18/08/2022 (TB)

CONSUMER NOTICE

The catalogue description and any exhibition of samples are only broad indications of the Products and R&G may make design changes which do not diminish their performance or visual appeal and supplying them in such state shall conform to the order. The Buyer acknowledges no representation or warranty (other than as to title) has been given or will apply to the Products other than those in R&G's order or confirmation and the Buyer confirms it has chosen the Products as being of merchantable quality and suitable for its particular purposes. Where R&G fits the Products or undertakes other services it shall exercise reasonable skill and care and rectify any fault free of charge unless the workmanship has been disturbed. The Buyer is responsible for ensuring that the warranty on the motorcycle is not affected by the fitting of the Products. On return of any defective Products R&G shall at its option either supply a replacement or refund the purchase money but shall not be liable if the Products have been modified or used or maintained otherwise than in accordance with R&G's or manufacturer's instructions and good engineering practice or if the defect arises from accident or neglect. Other than identified above and subject to R&G not limiting its liability for causing death and personal injury, it shall not be liable for indirect or consequential loss and otherwise its liability shall be limited to the amounts paid by the Buyer for the Products or the fitting or service concerned. These terms do not affect the Buyer's statutory rights.

R&G RACING RETURNS POLICY (NON-FAULTY GOODS)

Returns must be pre-authorized (if not pre-authorized the return will be rejected). Goods may only be returned direct to us if they were purchased direct from us (customer must prove if necessary). Otherwise to be returned to original vendor. Goods must be in re-sellable condition, in the opinion of R&G Racing. All returns are subject to a 25% restocking and handling fee (25% of the gross value exc. P&P – at the prevailing price at time of purchase). The customer must pay any and all carriage charges. No returns of discontinued products, unless within 14 days of purchase. This policy does not affect your statutory rights and does not refer to faulty goods.

R&G Racing

Unit 1, Shelley's Lane, East Worldham, Alton, Hampshire, GU34 3AQ

Tel: +44 (0)1420 89007 Fax: +44 (0)1420 87301 www.rg-racing.com Email: info@rg-racing.com



NOTICE DE MONTAGE POUR BP0017BK
PARE PROJECTIONS
KAWASAKI - KLR 650 2008-



CE KIT CONTIENT LES ARTICLES ILLUSTRÉS ET ÉTIQUETES SUR LA PAGE.

CERTAINES PARTIES PEUVENT ÊTRE PRÉSENTES UNIQUEMENT POUR LA CLARTÉ DES INSTRUCTIONS.

NE PAS PROCÉDER AU MONTAGE TANT QUE VOUS N'ÊTES PAS SÛR QUE TOUTES LES PIÈCES SOIENT PRÉSENTES.

VEUILLEZ LIRE TOUTES LES INSTRUCTIONS AVANT DE CONTINUER.

EN CAS DE DOUTE LORS DU MONTAGE DE NOS PRODUITS, CONSULTEZ UN DE NOS REVENDUEURS OU FAITES APPEL À UN TECHNICIEN QUALIFIÉ.

VEUILLEZ NOTER QUE LA FAÇON DONT LE KIT EST EMBALLÉ NE REPRÉSENTE PAS NECESSAIREMENT LA MANIÈRE DE LE MONTER SUR LA MOTO.

SI DES RONDELLES EN CAOUTCHOUC SONT UTILISÉES POUR MAINTENIR LES COMPOSANTS SUR LES BOULONS, ELLES PEUVENT ÊTRE JETÉES.

NOTICE DISPONIBLE AU TÉLÉCHARGEMENT SUR :

WWW.RG-RACING.COM

R&G Racing

Unit 1, Shelley's Lane, East Worldham, Alton, Hampshire, GU34 3AQ

Tel: +44 (0)1420 89007 Fax: +44 (0)1420 87301 www.rg-racing.com Email: info@rg-racing.com



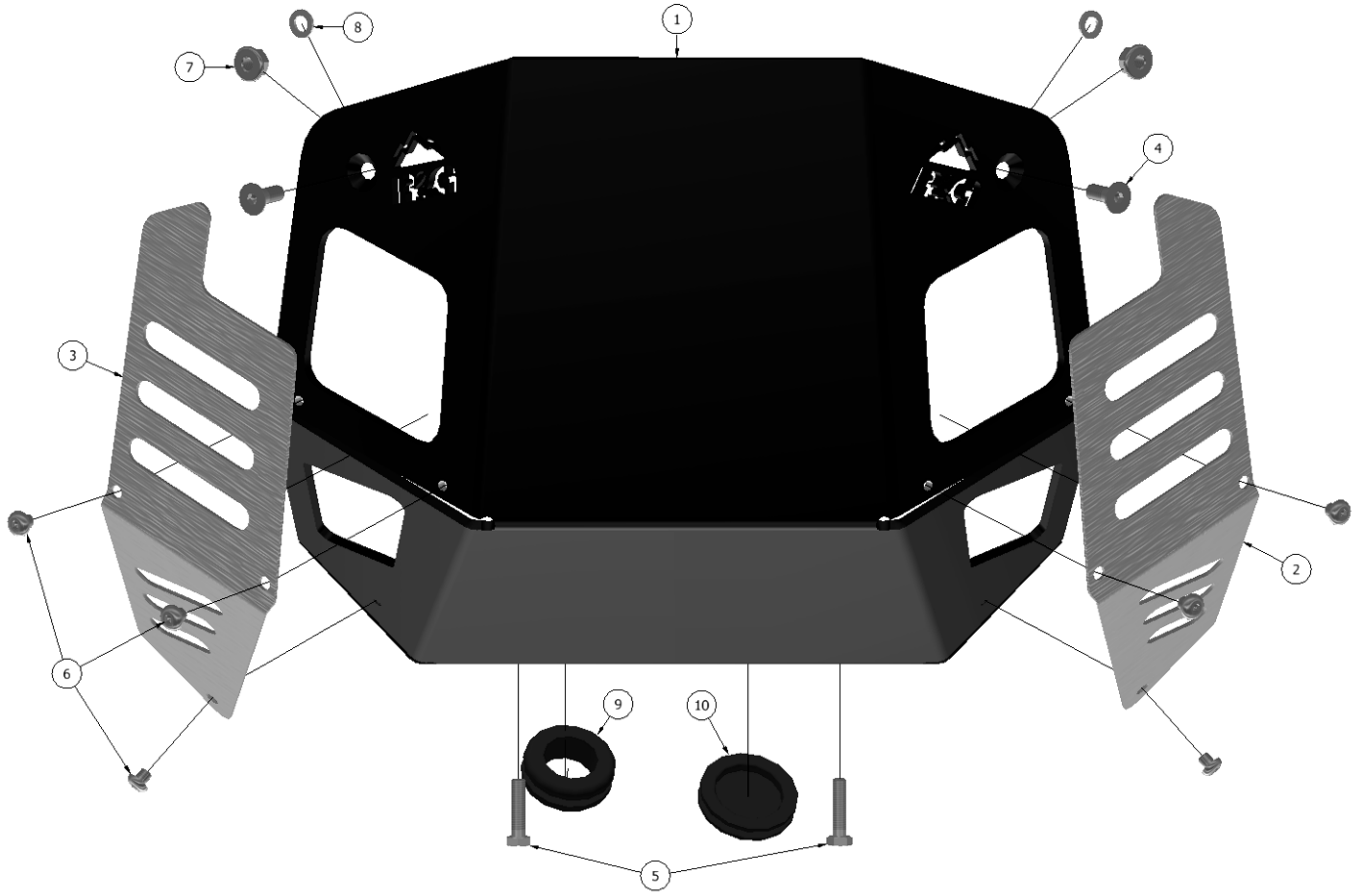
| <u>OUTILS REQUIS</u> | <u>VALEURS DE SERRAGE</u> |
|--|---|
| <ul style="list-style-type: none"> • Clé Allen 4mm • Clé dynamométrique 10mm | M4 BOULON = 8Nm M5 BOULON = 12Nm M6 BOULON = 15Nm M8 BOULON = 20Nm M10 BOULON = 40Nm M12 BOULON = 40Nm |

LÉGENDE

| ARTICLE NO. | DESCRIPTION | QTÉ |
|--------------------|--|------------|
| ARTICLE 1 | SMW0202 - PARE PROJECTIONS | 1 |
| ARTICLE 2 | SMW0203 - PLAQUE CÔTÉ GAUCHE | 1 |
| ARTICLE 3 | SMW0204 - PLAQUE CÔTÉ DROIT | 1 |
| ARTICLE 4 | M6 x 1.00 x 15mm - BOULONS (SUPPORTS SUPÉRIEURS) | 2 |
| ARTICLE 5 | M6 x 1.00 x 25mm - BOULONS (SUPPORTS INFÉRIEURS) | 2 |
| ARTICLE 6 | M5 x 0.8 x 5mm -BOULONS (PLAQUES DE RECOUVREMENT) | 6 |
| ARTICLE 7 | M6 x 1.00mm - ÉCROUS (SUPPORTS SUPÉRIEURS) | 2 |
| ARTICLE 8 | M6 - RONDELLES (SUPPORTS INFÉRIEURS) | 2 |
| ARTICLE 9 | RB0011 - OEILLET EN CAOUTCHOUC (POUR LIGNES DE TROP-PLEIN) | 1 |
| ARTICLE 10 | RB0012 - OEILLET EN CAOUTCHOUC (POUR BOUCHON DE PUISARD) | 1 |



SCHÉMA D'ENSEMBLE





PHOTOS DE MONTAGE



Photo 1

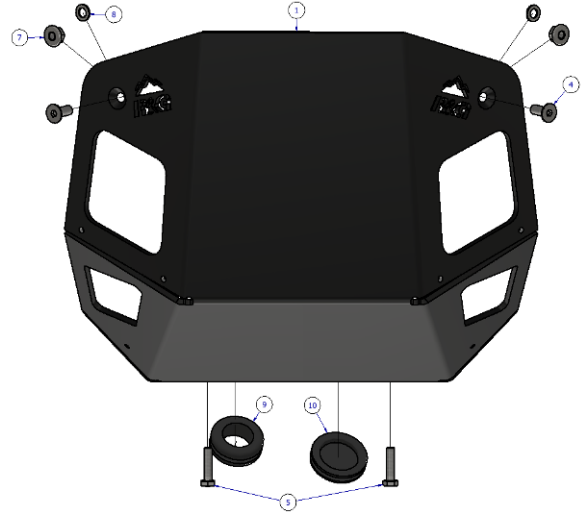


Photo 2

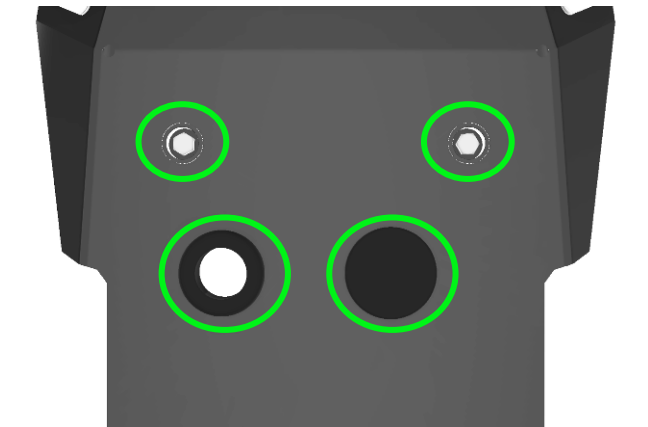


Photo 3



Photo 4

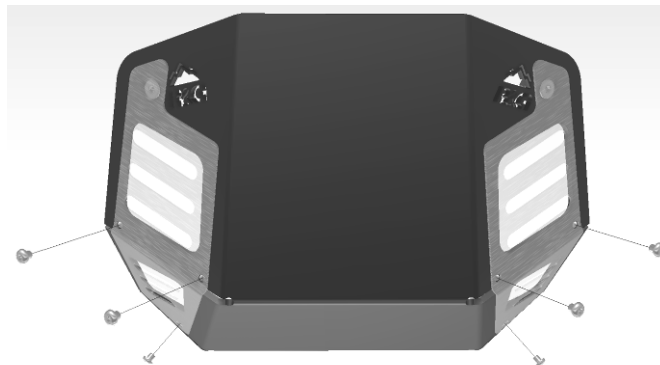


Photo 5



NOTICE DE MONTAGE

- Pour installer le pare projections R&G, la plaque d'origine devra être retirée. À l'aide d'une douille et d'une clé de 10 mm, retirez les 4 boulons marqués sur la photo 1.
- Avant de commencer, insérez les œillets en caoutchouc (articles 9 et 10) comme indiqué sur les photos 2 et 3.
- Présentez-le pare projections sur la moto et à l'aide d'une clé Allen de 4 mm, fixez sans serrer avec les nouveaux boulons à tête fraisée 2 x M6 x 15 mm (article 4) à l'avant du pare projections en les poussant à travers les trous fraisés puis à travers les supports avant d'origine.
- VEUILLEZ NOTER : Les supports avant d'origine peuvent avoir besoin d'être desserrés afin d'aligner les boulons avec leurs trous correspondants.
Avant le montage, veuillez appliquer du frein-filet sur toutes les fixations.
- Une fois que les boulons ont été poussés à travers les supports d'origine, les écrous nyloc M6 et les rondelles plates (articles 7 et 8) peuvent être appliqués sans serrer sur les boulons à tête fraisée.
- Veuillez-vous assurer que les deux lignes de débordement ne sont pas pincées pendant ce processus.
- Passez les conduites de trop-plein à travers l'œillet creux en caoutchouc avant de serrer.
- Les boulons à tête hexagonale M6x25mm (Article 5) peuvent maintenant être montés sur les points de fixation inférieurs situés sur la face inférieure de la plaque de base.
- Une fois que tous les boulons de montage ont été installés, ils peuvent être complètement serrés.
- Présentez les caches inox (Articles 2 & 3) un par un et posez sans serrer les boulons à tête bombée M5x5mm (Article 6) sur chaque point de fixation.
- Une fois que tous les boulons de la plaque de recouvrement ont été installés sans serrer, serrez-les un par un à l'aide d'une clé Allen de 4mm.

ISSUE 1 – 18/08/2022 (TB)

CONSUMER NOTICE

The catalogue description and any exhibition of samples are only broad indications of the Products and R&G may make design changes which do not diminish their performance or visual appeal and supplying them in such state shall conform to the order. The Buyer acknowledges no representation or warranty (other than as to title) has been given or will apply to the Products other than those in R&G's order or confirmation and the Buyer confirms it has chosen the Products as being of merchantable quality and suitable for its particular purposes. Where R&G fits the Products or undertakes other services it shall exercise reasonable skill and care and rectify any fault free of charge unless the workmanship has been disturbed. The Buyer is responsible for ensuring that the warranty on the motorcycle is not affected by the fitting of the Products. On return of any defective Products R&G shall at its option either supply a replacement or refund the purchase money but shall not be liable if the Products have been modified or used or maintained otherwise than in accordance with R&G's or manufacturer's instructions and good engineering practice or if the defect arises from accident or neglect. Other than identified above and subject to R&G not limiting its liability for causing death and personal injury, it shall not be liable for indirect or consequential loss and otherwise its liability shall be limited to the amounts paid by the Buyer for the Products or the fitting or service concerned. These terms do not affect the Buyer's statutory rights.

R&G RACING RETURNS POLICY (NON-FAULTY GOODS)

Returns must be pre-authorized (if not pre-authorized the return will be rejected). Goods may only be returned direct to us if they were purchased direct from us (customer must prove if necessary). Otherwise to be returned to original vendor. Goods

R&G Racing

Unit 1, Shelley's Lane, East Worldham, Alton, Hampshire, GU34 3AQ

Tel: +44 (0)1420 89007 Fax: +44 (0)1420 87301 www.rg-racing.com Email: info@rg-racing.com



must be in re-sellable condition, in the opinion of R&G Racing. All returns are subject to a 25% restocking and handling fee (25% of the gross value exc. P&P – at the prevailing price at time of purchase). The customer must pay any and all carriage charges. No returns of discontinued products, unless within 14 days of purchase. This policy does not affect your statutory rights and does not refer to faulty goods.