



FITTING INSTRUCTIONS CP0573/CP0558 AERO CRASH PROTECTORS



THIS KIT CONTAINS THE ITEMS PICTURED AND LABELLED OVER PAGE.

SOME PARTS MAY BE SHOWN FOR CLARITY OF INSTRUCTIONS ONLY.

DO NOT PROCEED UNTIL YOU ARE SURE ALL PARTS ARE PRESENT.

PLEASE READ ALL INSTRUCTIONS BEFORE PROCEEDING.

**IF IN ANY DOUBT WHEN FITTING OUR PRODUCTS, CONSULT ONE OF OUR DEALERS
OR HAVE FITTED BY A QUALIFIED TECHNICIAN.**

PLEASE NOTE THAT THE WAY THE KIT IS PACKED DOES NOT NECESSARILY REPRESENT THE WAY OF
MOUNTING TO THE BIKE.

IN THE EVENT OF RUBBER WASHERS BEING USED TO HOLD COMPONENTS ONTO BOLTS,
THESE RUBBER WASHERS CAN BE THROWN AWAY.

DIGITAL COPIES OF THESE INSTRUCTIONS ARE AVAILABLE FROM:

WWW.RG-RACING.COM

R&G Racing
Unit 1, Shelley's Lane, East Worldham, Alton, Hampshire, GU34 3AQ
Tel: +44 (0)1420 89007 Fax: +44 (0)1420 87301 www.rg-racing.com Email: info@rg-racing.com



<u>TOOLS REQUIRED</u>	<u>GENERAL TORQUE SETTINGS</u>
<ul style="list-style-type: none"> • SOCKET SET/ WRENCH • TORQUE WRENCH (UP TO 50Nm) • SUITABLE SUPPORT JACK • ALLEN KEY SET 	<p>M4 BOLT = 8Nm</p> <p>M5 BOLT = 12Nm</p> <p>M6 BOLT = 15Nm</p> <p>M8 BOLT = 20Nm</p> <p>M10 BOLT = 40Nm</p> <p>M12 BOLT = 40Nm</p>

LEGEND FOR UNIVERSAL ITEMS IN CP0573 AND CP0558

ITEM NO.	DESCRIPTION	QTY
ITEM 1	SMW0252 LHS BRACKET	1
ITEM 2	SMW0253 RHS BRACKET	1
ITEM 3	S1474 CRASH PROTECTOR SPACER LHS/RHS	2
ITEM 4	S0242 LHS/RHS FRONT SPACER	2
ITEM 5	S1091 SPACER LHS REAR	1
ITEM 6	S1512 SPACER RHS REAR	1
ITEM 7	M10X1.25X40MM HEX HEAD BOLT LHS REAR	1
ITEM 8	M10X1.25X45MM HEX HEAD BOLT RHS REAR	1
ITEM 9	M12X1.25X80MM HEX HEAD BOLT LHS/RHS FRONT	2
ITEM 10	M8X1.25X25MM COUNTERSUNK BOLT	4
ITEM 11	M10X20MM WASHER	4
ITEM 12	M12X20MM WASHER	2
ITEM 13	BC0002 BOBBING CAP	2
ITEM 14	NC0001 M10 HEX HEAD BOLT CAP	2
ITEM 15	NC0002 M12 HEX HEAD BOLT CAP	2

R&G Racing

Unit 1, Shelley's Lane, East Worldham, Alton, Hampshire, GU34 3AQ

Tel: +44 (0)1420 89007 Fax: +44 (0)1420 87301 www.rg-racing.com Email: info@rg-racing.com



LEGEND FOR KIT SPECIFIC ITEMS

CP0573 FOR GSX-8R

ITEM 16	B0472 WITH CS449 CRASH PROTECTOR WITH COMP SLEVE	2
ITEM 17	M10X1.5X30MM HEX HEAD BOLT	2

CP0558 FOR V-STROM 800 RANGE

ITEM 18	B0061 WITH CS341 CRASH PROTECTOR WITH COMP SLEVE	2
ITEM 19	M10X1.5X50MM HEX HEAD BOLT	2

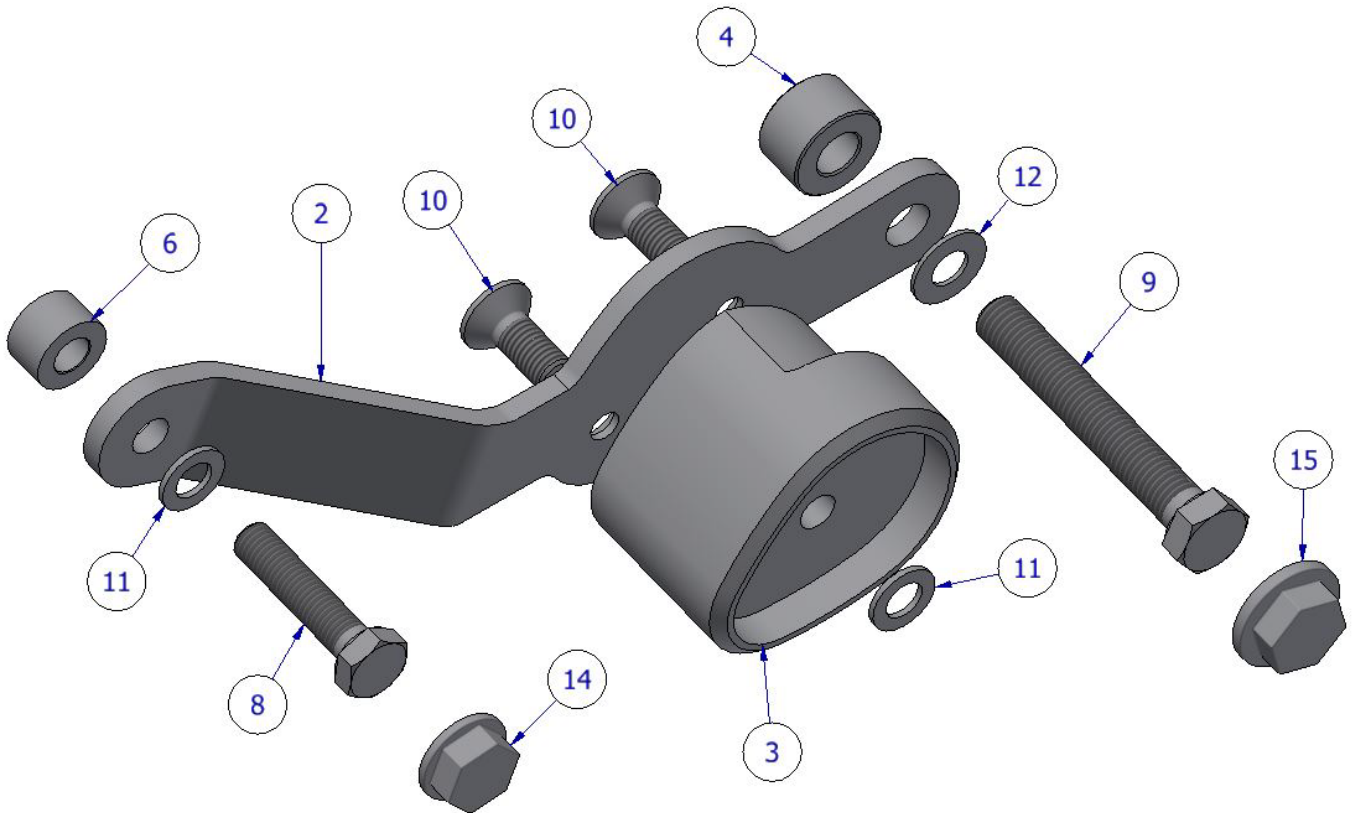
AERO-STYLE CRASH PROTECTOR ORIENTATION





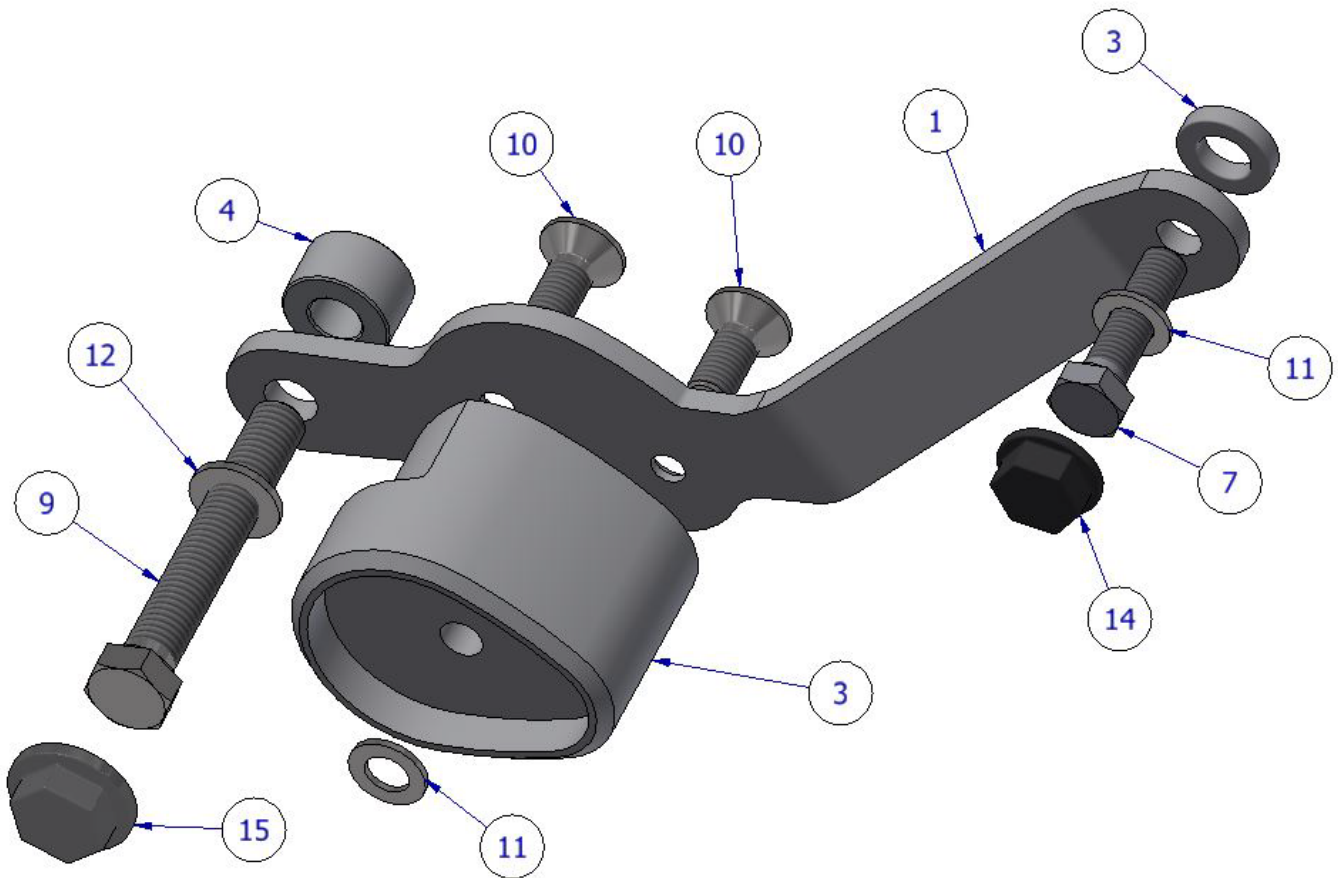
LHS & RHS EXPLODED ASSEMBLY VIEW

RHS

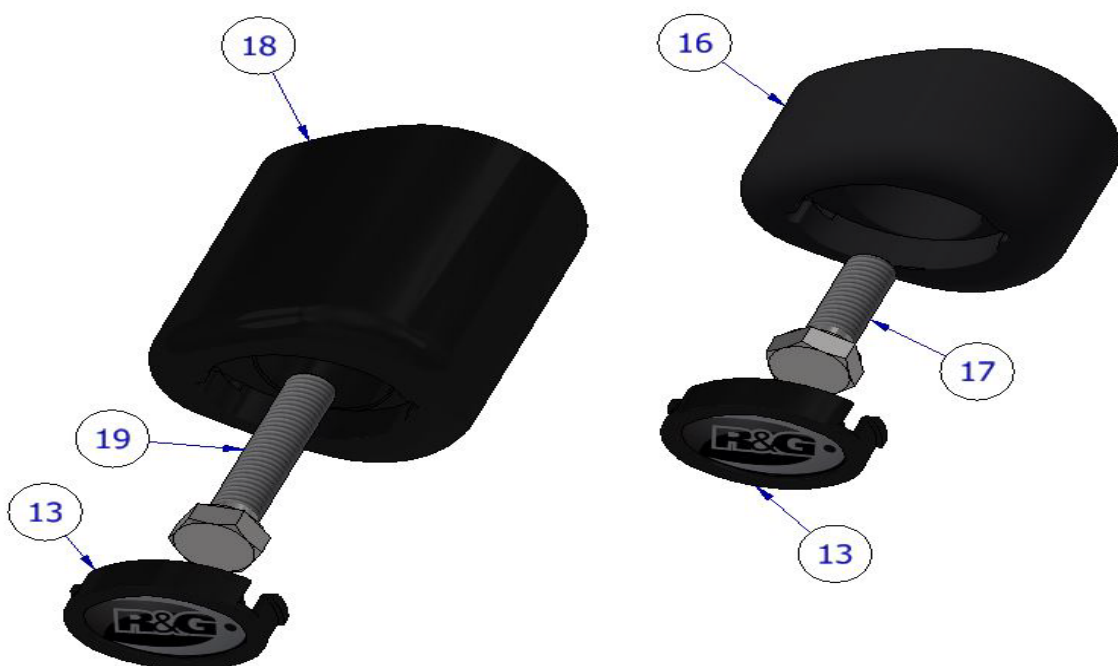




LHS



BOBBINS FOR BOTH KITS





FITTING PICTURES



Picture 1

FITTING INSTRUCTIONS

Before removing engine bolts, ensure the bike is upright and supported by a suitable engine stand or jack placed under the sump of the motorbike to support the partial weight of the engine, this will prevent the engine from moving during fitting. DO NOT REMOVE MORE THAN 1 ENGINE BOLT AT ANY TIME.

PREPARATION:

- Place a suitable jack beneath the engine in a central position using a piece of wood between the jack and engine.
- Apply very light pressure to the underside of the engine to support the engine during the fitment process.
- Remove LHS/ RHS fairings.

Assemble the crash protectors before removing the engine bolts to limit the amount of time the engine is partially un-supported.



INSTALLATION:

1. Assemble both RHS / LHS kits using the exploded assembly views.
2. Remove the two bolts on the RHS shown in Picture 1 (picture is of product fitted).
3. Place RHS assembly into the mounting position and tighten the bolts using the General Torque Settings on Page 2.
4. Now repeat the same process for the LHS.
5. Once the correct assembly is fitted to your bike, make sure you place the washer (ITEM 11) for the bobbin onto the bobbin bolt (ITEM 19 for V-STROM) and (ITEM 17 for GSX-8R) then fit the bobbin into the assembly and tighten using the General Torque Settings on Page 2.
6. Ensure all Bolts are tight now place all of the bolt caps and bobbin caps onto the assembly.
7. Final step is to refit the OEM fairings.

Please note: *Torque of the engine/bobbin bolts should be checked at regular intervals when doing routine maintenance/servicing.*

ISSUE 1 - 03/09/2024 (JH)

CONSUMER NOTICE

The catalogue description and any exhibition of samples are only broad indications of the Products and R&G may make design changes which do not diminish their performance or visual appeal and supplying them in such state shall conform to the order. The Buyer acknowledges no representation or warranty (other than as to title) has been given or will apply to the Products other than those in R&G's order or confirmation and the Buyer confirms it has chosen the Products as being of merchantable quality and suitable for its particular purposes. Where R&G fits the Products or undertakes other services it shall exercise reasonable skill and care and rectify any fault free of charge unless the workmanship has been disturbed. The Buyer is responsible for ensuring that the warranty on the motorcycle is not affected by the fitting of the Products. On return of any defective Products R&G shall at its option either supply a replacement or refund the purchase money but shall not be liable if the Products have been modified or used or maintained otherwise than in accordance with R&G's or manufacturer's instructions and good engineering practice or if the defect arises from accident or neglect. Other than identified above and subject to R&G not limiting its liability for causing death and personal injury, it shall not be liable for indirect or consequential loss and otherwise its liability shall be limited to the amounts paid by the Buyer for the Products or the fitting or service concerned. These terms do not affect the Buyer's statutory rights.

R&G RACING RETURNS POLICY (NON-FAULTY GOODS)

Returns must be pre-authorized (if not pre-authorized the return will be rejected). Goods may only be returned direct to us if they were purchased direct from us (customer must prove if necessary). Otherwise to be returned to original vendor. Goods must be in re-sellable condition, in the opinion of R&G Racing. All returns are subject to a 25% restocking and handling fee (25% of the gross value exc. P&P – at the prevailing price at time of purchase). The customer must pay any and all carriage charges. No returns of discontinued products, unless within 14 days of purchase. This policy does not affect your statutory rights and does not refer to faulty goods.

R&G Racing

Unit 1, Shelley's Lane, East Worldham, Alton, Hampshire, GU34 3AQ

Tel: +44 (0)1420 89007 Fax: +44 (0)1420 87301 www.rg-racing.com Email: info@rg-racing.com



NOTICE DE MONTAGE CP0573/CP0558 PROTECTIONS CRASH



CE KIT CONTIENT LES ARTICLES ILLUSTRES ET ETIQUETES SUR LA PAGE.

CERTAINES PARTIES PEUVENT ETRE PRESENTES UNIQUEMENT POUR LA CLARTE DES INSTRUCTIONS.

NE PAS PROCEDER AU MONTAGE TANT QUE VOUS N'ETES PAS SUR QUE TOUTES LES PIECES SOIENT PRESENTES.

VEUILLEZ LIRE TOUTES LES INSTRUCTIONS AVANT DE CONTINUER.

EN CAS DE DOUTE LORS DU MONTAGE DE NOS PRODUITS, CONSULTEZ UN DE NOS REVENDEURS OU FAITES APPEL A UN TECHNICIEN QUALIFIÉ.

VEUILLEZ NOTER QUE LA FAÇON DONT LE KIT EST EMBALLE NE REPRESENTE PAS NECESSAIREMENT LA MANIERE DE LE MONTER SUR LA MOTO.

SI DES RONDELLES EN CAOUTCHOUC SONT UTILISEES POUR MAINTENIR LES COMPOSANTS SUR LES BOULONS, ELLES PEUVENT ETRE JETTES.

NOTICE DISPONIBLE AU TELECHARGEMENT SUR :

WWW.RG-RACING.COM

R&G Racing

Unit 1, Shelley's Lane, East Worldham, Alton, Hampshire, GU34 3AQ

Tel: +44 (0)1420 89007 Fax: +44 (0)1420 87301 www.rg-racing.com Email: info@rg-racing.com



<u>OUTILS REQUIS</u>	<u>VALEURS DE SERRAGE</u>
<ul style="list-style-type: none"> • CLÉ À CLIQUET + DOUILLE • CLÉ DYNAMOMÉTRIQUE (JUSQU'À 50Nm) • SUPPORT DE CRIC ADAPTÉ • CLÉ ALLEN 	M4 BOULON = 8Nm M5 BOULON = 12Nm M6 BOULON = 15Nm M8 BOULON = 20Nm M10 BOULON = 40Nm

LÉGENDE DES OBJETS UNIVERSELS EN CP0573 ET CP0558

ARTICLE NO.	DESCRIPTION	QTÉ
ARTICLE 1	SMW0252 SUPPORT CÔTÉ GAUCHE	1
ARTICLE 2	SMW0253 SUPPORT CÔTÉ DROIT	1
ARTICLE 3	S1474 ENTRETOISE DE PROTECTION CRASH GAUCHE/DROITE	2
ARTICLE 4	S0242 ENTRETOISE AVANT GAUCHE/DROITE	2
ARTICLE 5	S1091 ENTRETOISE ARRIÈRE GAUCHE	1
ARTICLE 6	S1512 ENTRETOISE ARRIÈRE DROITE	1
ARTICLE 7	M10X1.25X40MM BOULON À TÊTE HEXAGONALE ARRIÈRE GAUCHE	1
ARTICLE 8	M10X1.25X45MM BOULON À TÊTE HEXAGONALE ARRIÈRE DROIT	1
ARTICLE 9	M12X1.25X80MM BOULON À TÊTE HEXAGONALE AVANT GAUCHE/DROITE	2
ARTICLE 10	M8X1.25X25MM BOULON	4
ARTICLE 11	M10X20MM RONDELLE	4
ARTICLE 12	M12X20MM RONDELLE	2
ARTICLE 13	BC0002 BOUCHON DE PROTECTION	2
ARTICLE 14	NC0001 M10 BOUCHON DE BOULON	2
ARTICLE 15	NC0002 M12 BOUCHON DE BOULON	2



LÉGENDE DES ARTICLES SPÉCIFIQUES AU KIT

CP0573 POUR GSX-8R

ARTICLE 16	B0472 AVEC CS449 PROTECTION CRASH AVEC MANCHON POUR ORDINATEUR	2
ARTICLE 17	M10X1.5X30MM BOULON	2

CP0558 POUR V-STROM 800 RANGE

ARTICLE 18	B0061 AVEC CS341 PROTECTION CRASH AVEC MANCHON POUR ORDINATEUR	2
ARTICLE 19	M10X1.5X50MM BOULON	2

ORIENTATION DE LA PROTECTION CRASH



R&G Racing

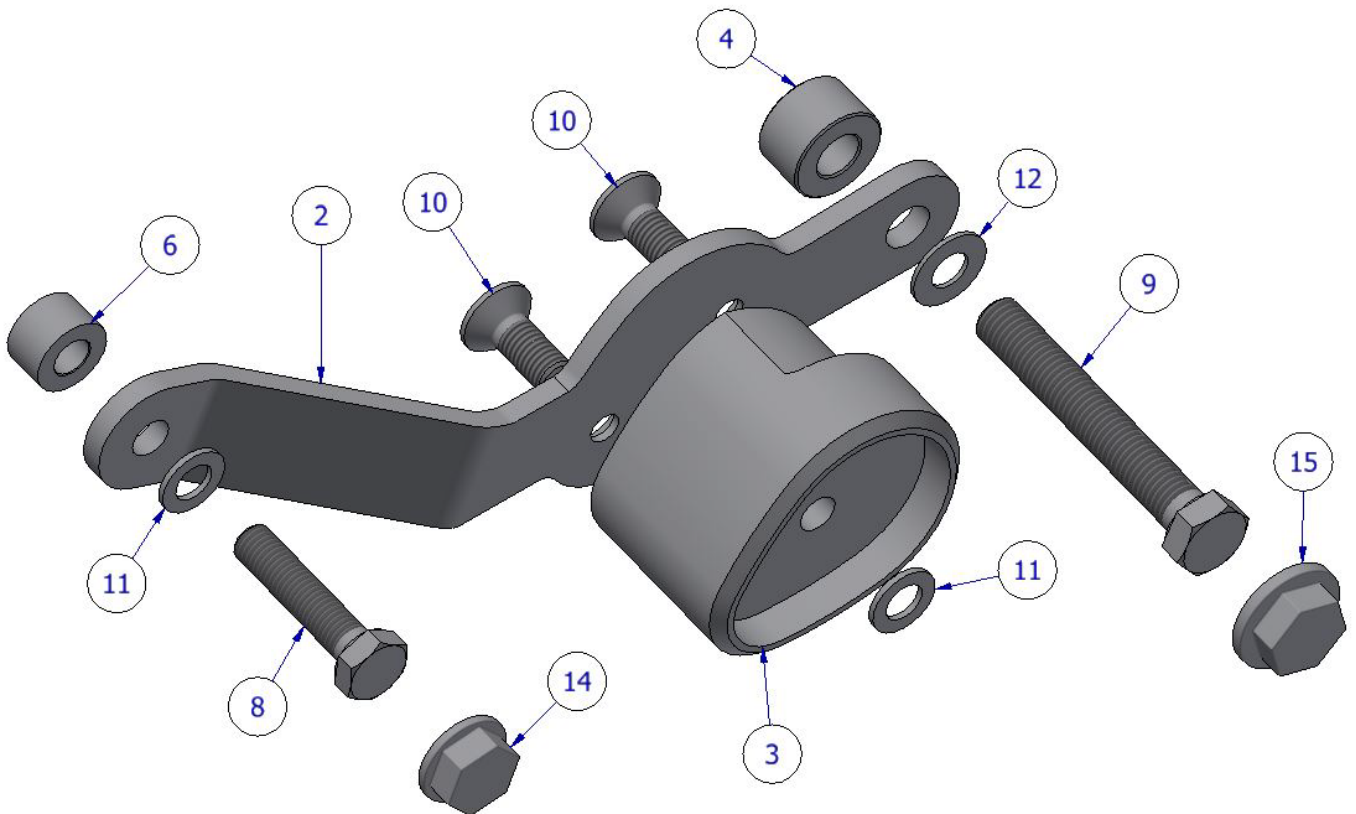
Unit 1, Shelley's Lane, East Worldham, Alton, Hampshire, GU34 3AQ

Tel: +44 (0)1420 89007 Fax: +44 (0)1420 87301 www.rg-racing.com Email: info@rg-racing.com



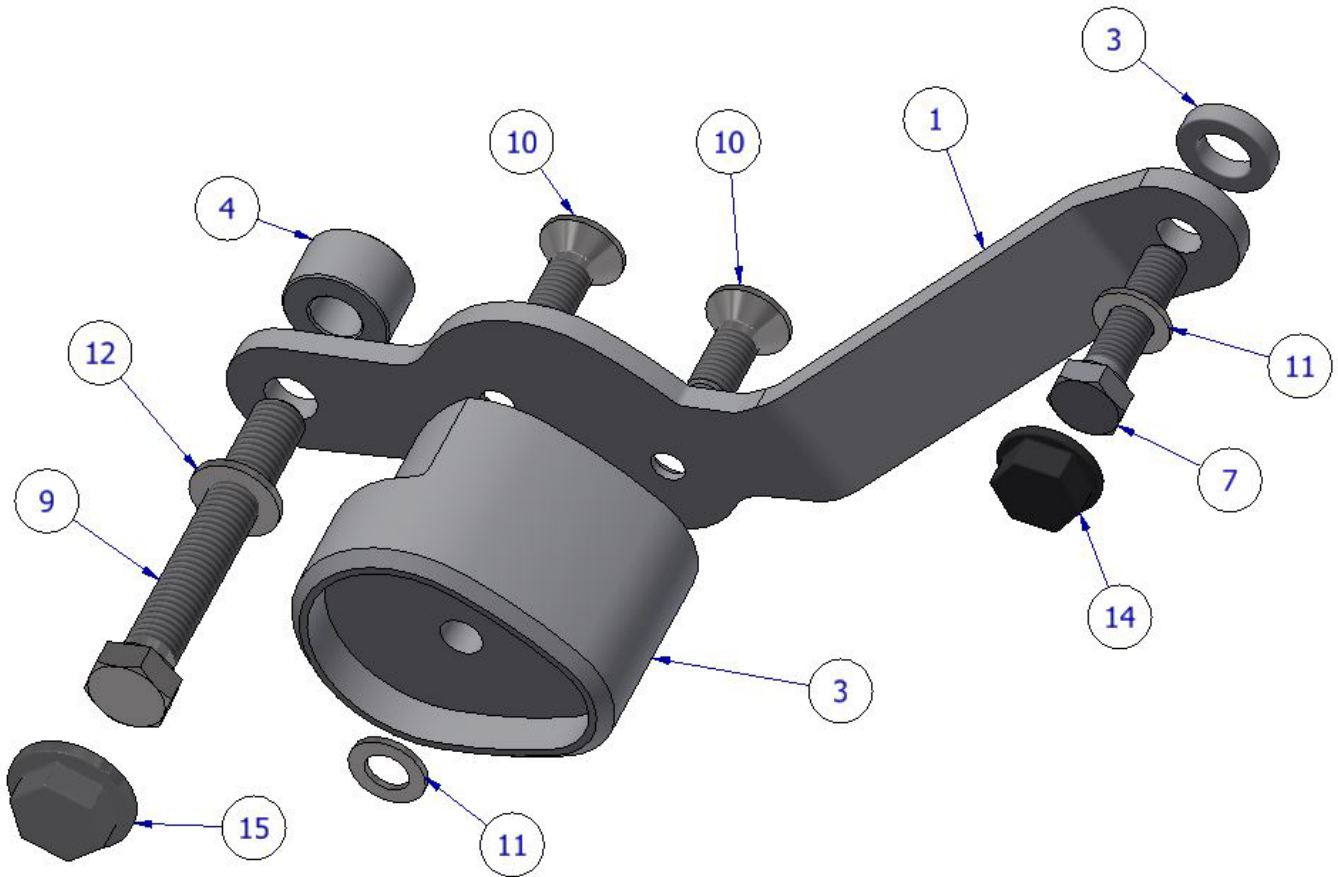
VUE D'ENSEMBLE CÔTÉ GAUCHE ET DROIT

CÔTÉ DROIT

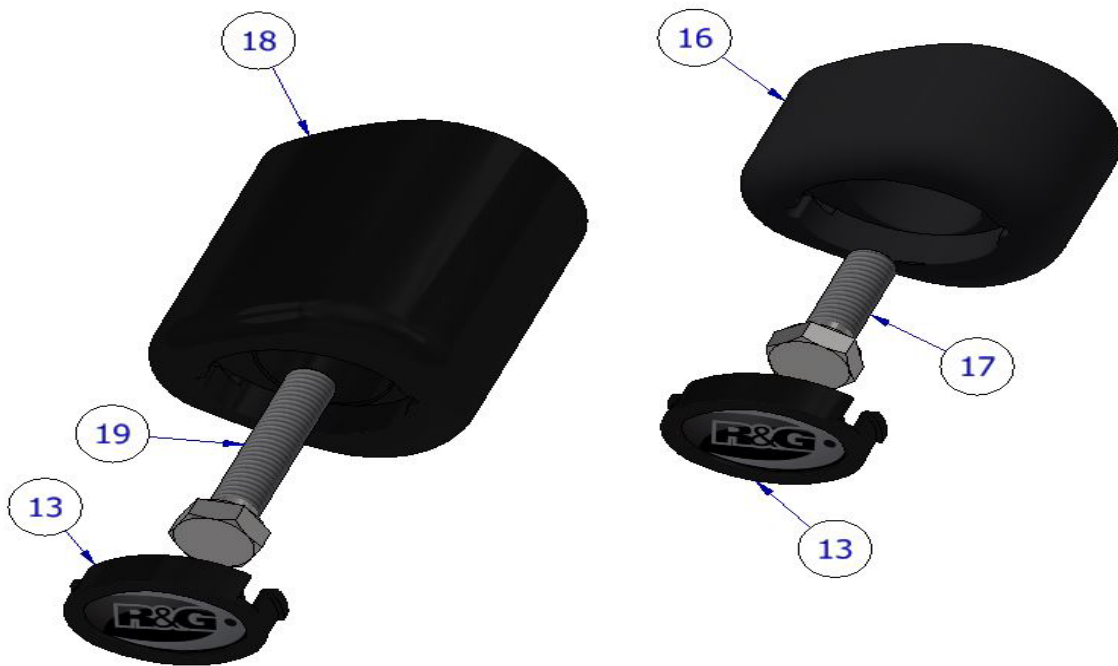




CÔTÉ GAUCHE



PROTECTIONS POUR LES 2 KITS



PHOTOS DE MONTAGE



Photo 1



NOTICE DE MONTAGE

IMPORTANT : Avant de retirer les boulons du moteur, assurez-vous que la moto soit en position verticale et soutenue par un support moteur ou un cric approprié placé sous le carter de la moto pour supporter le poids partiel du moteur, cela empêchera le moteur de bouger pendant le montage. NE RETIREZ PAS PLUS D'UN BOULON DU MOTEUR À LA FOIS.

PRÉPARATION:

- Placez un cric adapté sous le moteur en position centrale en utilisant un morceau de bois entre le cric et le moteur.
- Appliquez une très légère pression sur le dessous du moteur pour soutenir le moteur pendant le processus de montage.
- Retirez les carénages gauche/droit.

Assemblez les protections crash avant de retirer les boulons du moteur pour limiter la durée pendant laquelle le moteur est partiellement sans support.

INSTALLATION:

8. Assemblez les deux kits côté droit et gauche en utilisant les vues d'assemblage éclatées.
9. Retirez les deux boulons du côté droit indiqués sur la photo 1 (la photo montre le produit installé).
10. Placez l'assemblage côté droit dans la position de montage et serrez les boulons en utilisant les réglages de couple généraux de la page 2.
11. Répétez maintenant le même processus du côté gauche.
12. Une fois l'assemblage correct monté sur votre moto, assurez-vous de placer la rondelle (ARTICLE 11) pour la protection sur le boulon de protection (ARTICLE 19 pour V-STROM) et (ARTICLE 17 pour GSX-8R) puis installez la protection dans l'assemblage et serrez en utilisant les réglages de couple généraux de la page 2.
13. Assurez-vous que tous les boulons soient bien serrés, placez maintenant tous les capuchons de boulon et les capuchons de protection sur l'assemblage.
14. L'étape finale consiste à remonter les carénages d'origine.

Note : *Le couple de serrage des boulons du moteur/protection doit être vérifié à intervalles réguliers lors de l'entretien/réparation de routine.*

ISSUE 1 - 03/09/2024 (JH)

CONSUMER NOTICE

The catalogue description and any exhibition of samples are only broad indications of the Products and R&G may make design changes which do not diminish their performance or visual appeal and supplying them in such state shall conform to the order. The Buyer acknowledges no representation or warranty (other than as to title) has been given or will apply to the Products other than those in R&G's order or confirmation and the Buyer confirms it has chosen the Products as being of merchantable quality and suitable for its particular purposes. Where R&G fits the Products or undertakes other services it shall exercise reasonable skill and care and rectify any fault free of charge unless the workmanship has been disturbed. The Buyer is responsible for ensuring that

R&G Racing

Unit 1, Shelley's Lane, East Worldham, Alton, Hampshire, GU34 3AQ

Tel: +44 (0)1420 89007 Fax: +44 (0)1420 87301 www.rg-racing.com Email: info@rg-racing.com



the warranty on the motorcycle is not affected by the fitting of the Products. On return of any defective Products R&G shall at its option either supply a replacement or refund the purchase money but shall not be liable if the Products have been modified or used or maintained otherwise than in accordance with R&G's or manufacturer's instructions and good engineering practice or if the defect arises from accident or neglect. Other than identified above and subject to R&G not limiting its liability for causing death and personal injury, it shall not be liable for indirect or consequential loss and otherwise its liability shall be limited to the amounts paid by the Buyer for the Products or the fitting or service concerned. These terms do not affect the Buyer's statutory rights.

R&G RACING RETURNS POLICY (NON-FAULTY GOODS)

Returns must be pre-authorized (if not pre-authorized the return will be rejected). Goods may only be returned direct to us if they were purchased direct from us (customer must prove if necessary). Otherwise to be returned to original vendor. Goods must be in re-sellable condition, in the opinion of R&G Racing. All returns are subject to a 25% restocking and handling fee (25% of the gross value exc. P&P – at the prevailing price at time of purchase). The customer must pay any and all carriage charges. No returns of discontinued products, unless within 14 days of purchase. This policy does not affect your statutory rights and does not refer to faulty goods.

R&G Racing

Unit 1, Shelley's Lane, East Worldham, Alton, Hampshire, GU34 3AQ

Tel: +44 (0)1420 89007 Fax: +44 (0)1420 87301 www.rg-racing.com Email: info@rg-racing.com