



FITTING INSTRUCTIONS FOR CP0575 CRASH PROTECTORS



THIS KIT CONTAINS THE ITEMS PICTURED AND LABELLED OVER PAGE.

SOME PARTS MAY BE SHOWN FOR CLARITY OF INSTRUCTIONS ONLY.

DO NOT PROCEED UNTIL YOU ARE SURE ALL PARTS ARE PRESENT.

PLEASE READ ALL INSTRUCTIONS BEFORE PROCEEDING.

**IF IN ANY DOUBT WHEN FITTING OUR PRODUCTS, CONSULT ONE OF OUR DEALERS
OR HAVE FITTED BY A QUALIFIED TECHNICIAN.**

PLEASE NOTE THAT THE WAY THE KIT IS PACKED DOES NOT NECESSARILY REPRESENT THE WAY OF
MOUNTING TO THE BIKE.

IN THE EVENT OF RUBBER WASHERS BEING USED TO HOLD COMPONENTS ONTO BOLTS,
THESE RUBBER WASHERS CAN BE THROWN AWAY.

DIGITAL COPIES OF THESE INSTRUCTIONS ARE AVAILABLE FROM:

WWW.RG-RACING.COM

R&G

Unit 1, Shelley's Lane, East Worldham, Alton, Hampshire, GU34 3AQ
Tel: +44 (0)1420 89007 www.rg-racing.com Email: info@rg-racing.com



<u>GENERAL TORQUE SETTINGS</u>	<u>TOOLS REQUIRED</u>
M4 BOLT = 8Nm M5 BOLT = 12Nm M6 BOLT = 15Nm M8 BOLT = 20Nm M10 BOLT = 40Nm	<ul style="list-style-type: none"> • Torque Wrench • Scissor Jack • 14, 17mm & 19mm Sockets and Ratchet • Set of Metric Allen Keys

LEGEND

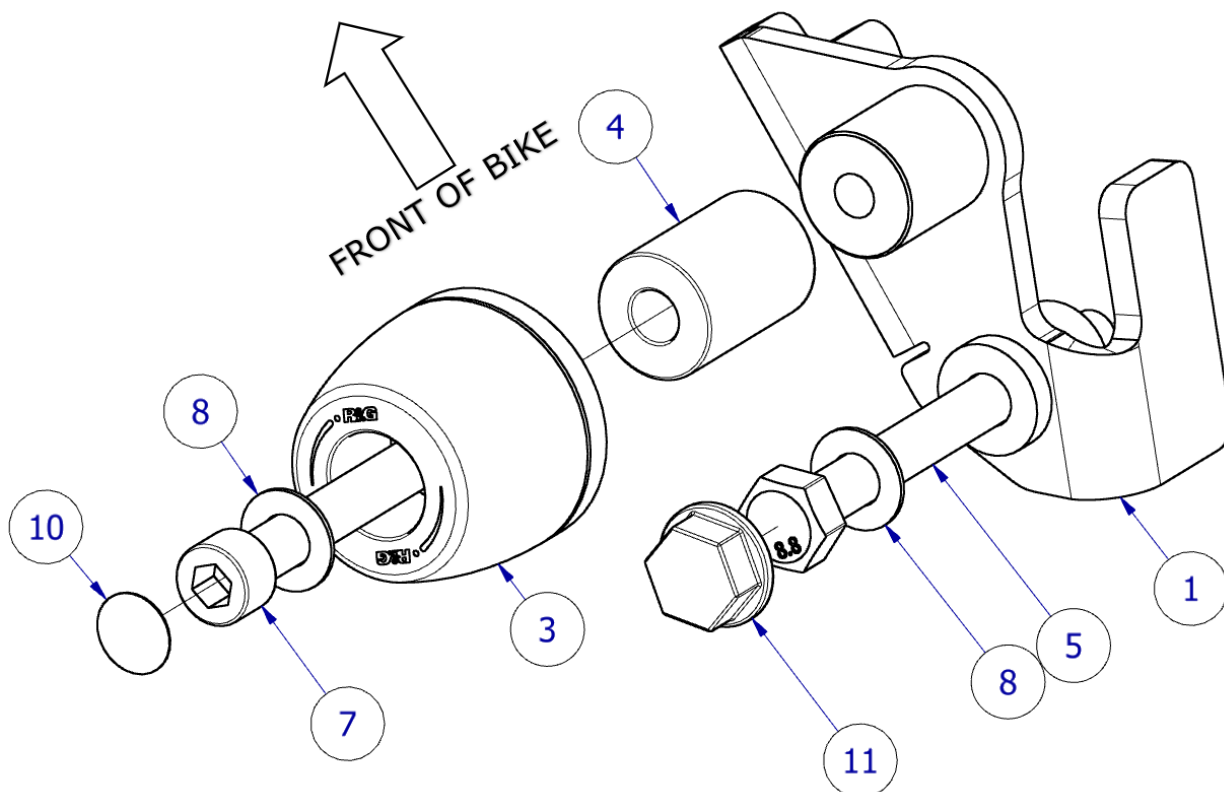
ITEM NO.	DESCRIPTION	QTY
ITEM 1	M0812 LHS CRASH PROTECTOR BRACKET	1
ITEM 2	M0813 RHS CRASH PROTECTOR BRACKET	1
ITEM 3	B0576 CRASH PROTECTOR	2
ITEM 4	S0466 - 36mm LHS/RHS CRASH PROTECTOR SPACER	2
ITEM 5	M10X1.5x100MM HEX HEAD BOLT	1
ITEM 6	M10x1.5x70MM HEX HEAD BOLT	1
ITEM 7	M10x1.25x80MM CAP HEAD BOLT	2
ITEM 8	M10x20MM WASHER	4
ITEM 9	FRAME PROTECTION SHEET (150x100MM)	1
ITEM 10	NC0010 - M10 CAP HEAD BOLT CAP	2
ITEM 11	NC0001 - M10 HEX HEAD BOLT CAP	2

R&G

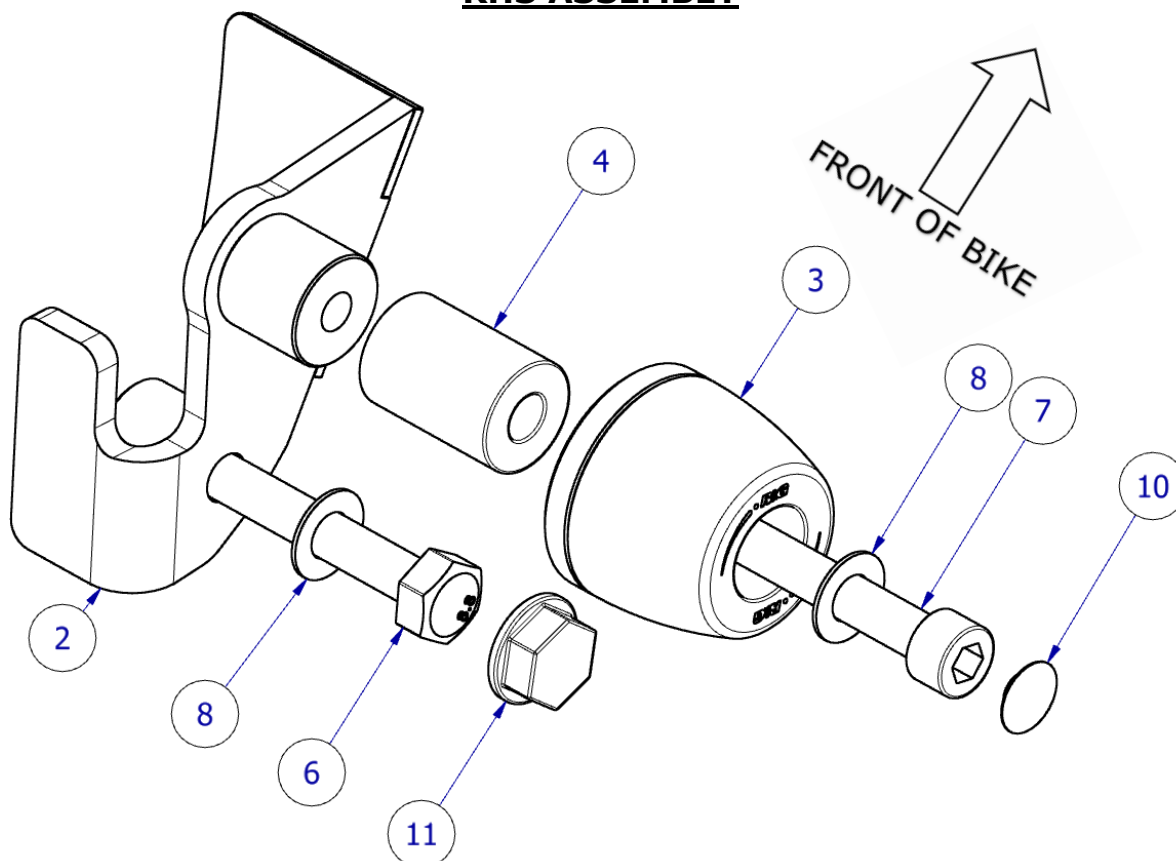
Unit 1, Shelley's Lane, East Worldham, Alton, Hampshire, GU34 3AQ
 Tel: +44 (0)1420 89007 www.rg-racing.com Email: info@rg-racing.com



LHS ASSEMBLY

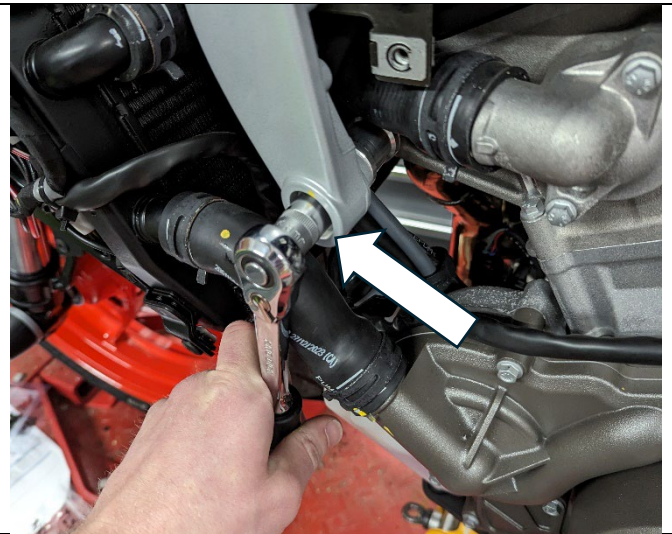


RHS ASSEMBLY





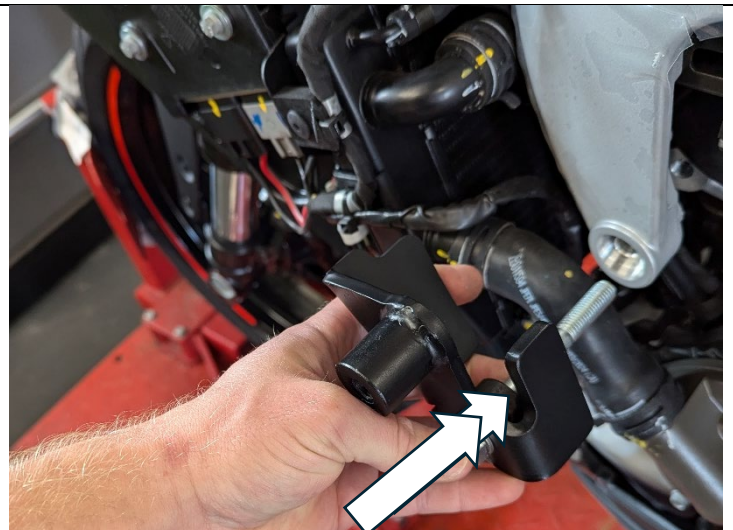
PICTURE 1



PICTURE 2



PICTURE 3



PICTURE 4



PICTURE 5



PICTURE 6



PICTURE 7



PICTURE 8

FITTING INSTRUCTIONS

IMPORTANT: Before removing engine bolts, ensure the bike is upright and supported by a suitable engine stand or jack placed under the sump of the motorbike to support the partial weight of the engine, this will prevent the engine from moving during fitting. DO NOT REMOVE MORE THAN ONE ENGINE BOLT AT ANY TIME.

Left-Hand Side

- Remove the left-hand fairing mid-section from the bike according to your service manual.
- With the engine fully supported as shown in **Picture 1**, remove the engine bolt arrowed in **Picture 2**.
- Offer the LHS Crash protector bracket (**item 1**) and note where there could be contact between the motorcycle frame and bracket, cut and apply frame protection tape (**item 9**) onto the bracket as shown in **Picture 3**.

NOTE: To avoid cross threading apply forward pressure to the bolt and rotate counter-clockwise until a click is heard then begin to turn clockwise & tighten.

- Referring to the **LHS Assembly diagram**, Using the M10x100mm Hex head bolt (**item 5**) and M10 Washer (**item 8**), fix the LHS Crash protector bracket (**item 1**) into place, ensuring the standoff sits into the frame recess and supporting tabs cup the frame as shown in **Picture 4**.
- While holding the bracket in place so it is central to the frame, tighten the M10 bolt to the recommended specification.
- Place one M10 bolt head cap (**item 11**) onto the head of the bolt.

Right-Hand Side

- Remove the right-hand side fairing mid-section from the bike according to your service manual.
- With the engine fully supported as shown in **Picture 1**, remove the engine bolt arrowed in **Picture 5**.
- Offer the RHS Crash protector bracket (**item 2**) and note where there could be contact between the motorcycle frame and bracket, cut and apply frame protection tape (**item 9**) onto the bracket as shown in **Picture 3**.

R&G

Unit 1, Shelley's Lane, East Worldham, Alton, Hampshire, GU34 3AQ
Tel: +44 (0)1420 89007 www.rg-racing.com Email: info@rg-racing.com



- Referring to the **RHS Assembly diagram**, Using the M10x70mm Hex head bolt (**item 6**) and M10 Washer (**item 8**), fix the RHS Crash protector bracket (**item 2**) into place, ensuring the standoff sits into the frame recess and supporting tabs cup the frame as shown in **Picture 6**. Note the thinner section of the bracket should sit between the radiator support bracket and frame.

NOTE: To avoid cross threading apply forward pressure to the bolt and rotate counter-clockwise until a click is heard then begin to turn clockwise & tighten.

- While holding the bracket in place so it is central to the frame, tighten the M10 bolt to the recommended specification.
- Place one M10 bolt head cap (**item 11**) onto the head of the bolt.

For both sides

- Ensuring both replacement engine bolts are correctly torqued, remove the jack from under the engine
- Re-fit all fairing to the bike as originally removed, the crash protector mounts should be visible as shown in **picture 7**.
- Following the assembly diagram for each side, fit one M10x20 washer (**item 8**) over the M10x80mm cap head bolt (**item 7**) and slide one crash protector (**item 3**) followed by one of the 36mm spacers (**item 4**) so that the head of the bolt sits inside the crash protector and offer up to the exposed boss of the crash protector bracket as shown in **Picture 7**.
- Fit the crash protector into the exposed boss on each side and torque to the recommended specification on page 2.
- Finally, place one M10 Cap head bolt cap (**item 10**) into each crash protector as shown in **Picture 8**.
- Before riding, check both sides are secure.

Please note: *Torque of the engine/crash protector bolts should be checked at regular intervals when doing routine maintenance/servicing.*

ISSUE 1 - 24/09/2024 - DM

CONSUMER NOTICE

The catalogue description and any exhibition of samples are only broad indications of the Products and R&G may make design changes which do not diminish their performance or visual appeal and supplying them in such state shall conform to the order. The Buyer acknowledges no representation or warranty (other than as to title) has been given or will apply to the Products other than those in R&G's order or confirmation and the Buyer confirms it has chosen the Products as being of merchantable quality and suitable for its particular purposes. Where R&G fits the Products or undertakes other services it shall exercise reasonable skill and care and rectify any fault free of charge unless the workmanship has been disturbed. The Buyer is responsible for ensuring that the warranty on the motorcycle is not affected by the fitting of the Products. On return of any defective Products R&G shall at its option either supply a replacement or refund the purchase money but shall not be liable if the Products have been modified or used or maintained otherwise than in accordance with R&G's or manufacturer's instructions and good engineering practice or if the defect arises from accident or neglect. Other than identified above and subject to R&G not limiting its liability for causing death and personal injury, it shall not be liable for indirect or consequential loss and otherwise its liability shall be limited to the amounts paid by the Buyer for the Products or the fitting or service concerned. These terms do not affect the Buyer's statutory rights.

R&G RACING RETURNS POLICY (NON-FAULTY GOODS)

Returns must be pre-authorized (if not pre-authorized the return will be rejected). Goods may only be returned direct to us if they were purchased direct from us (customer must prove if necessary). Otherwise to be returned to original vendor. Goods must be in re-sellable condition, in the opinion of R&G Racing. All returns are subject to a 25% restocking and handling fee (25% of the gross value exc. P&P – at the prevailing price at time of purchase). The customer must pay any and all carriage charges. No returns of discontinued products, unless within 14 days of purchase. This policy does not affect your statutory rights and does not refer to faulty goods.

R&G

Unit 1, Shelley's Lane, East Worldham, Alton, Hampshire, GU34 3AQ
Tel: +44 (0)1420 89007 www.rg-racing.com Email: info@rg-racing.com



NOTICE DE MONTAGE CP0575 PROTECTIONS CRASH



CE KIT CONTIENT LES ARTICLES ILLUSTRÉS ET ÉTIQUETÉS SUR LA PAGE.

CERTAINES PARTIES PEUVENT ÊTRE PRÉSENTES UNIQUEMENT POUR LA CLARTÉ DES INSTRUCTIONS.

NE PAS PROCÉDER AU MONTAGE TANT QUE VOUS N'ÊTES PAS SÛR QUE TOUTES LES PIÈCES SOIENT PRÉSENTES.

VEUILLEZ LIRE TOUTES LES INSTRUCTIONS AVANT DE CONTINUER.

EN CAS DE DOUTE LORS DU MONTAGE DE NOS PRODUITS, CONSULTEZ UN DE NOS REVENDEURS OU FAITES APPEL À UN TECHNICIEN QUALIFIÉ.

VEUILLEZ NOTER QUE LA FAÇON DONT LE KIT EST EMBALLÉ NE REPRÉSENTE PAS NECESSAIREMENT LA MANIÈRE DE LE MONTER SUR LA MOTO.

SI DES RONDELLES EN CAOUTCHOUC SONT UTILISÉES POUR MAINTENIR LES COMPOSANTS SUR LES BOULONS, ELLES PEUVENT ÊTRE JETÉES.

NOTICE DISPONIBLE AU TÉLÉCHARGEMENT SUR :
WWW.RG-RACING.COM



<u>VALEURS DE SERRAGE</u>	<u>OUTILS REQUIS</u>
M4 BOULON = 8Nm	<ul style="list-style-type: none"> • Clé dynamométrique • Cric à ciseaux • Clé à cliquet + douilles 14, 17mm & 19mm • Clés Allen
M5 BOULON = 12Nm	
M6 BOULON = 15Nm	
M8 BOULON = 20Nm	
M10 BOULON = 40Nm	

LÉGENDE

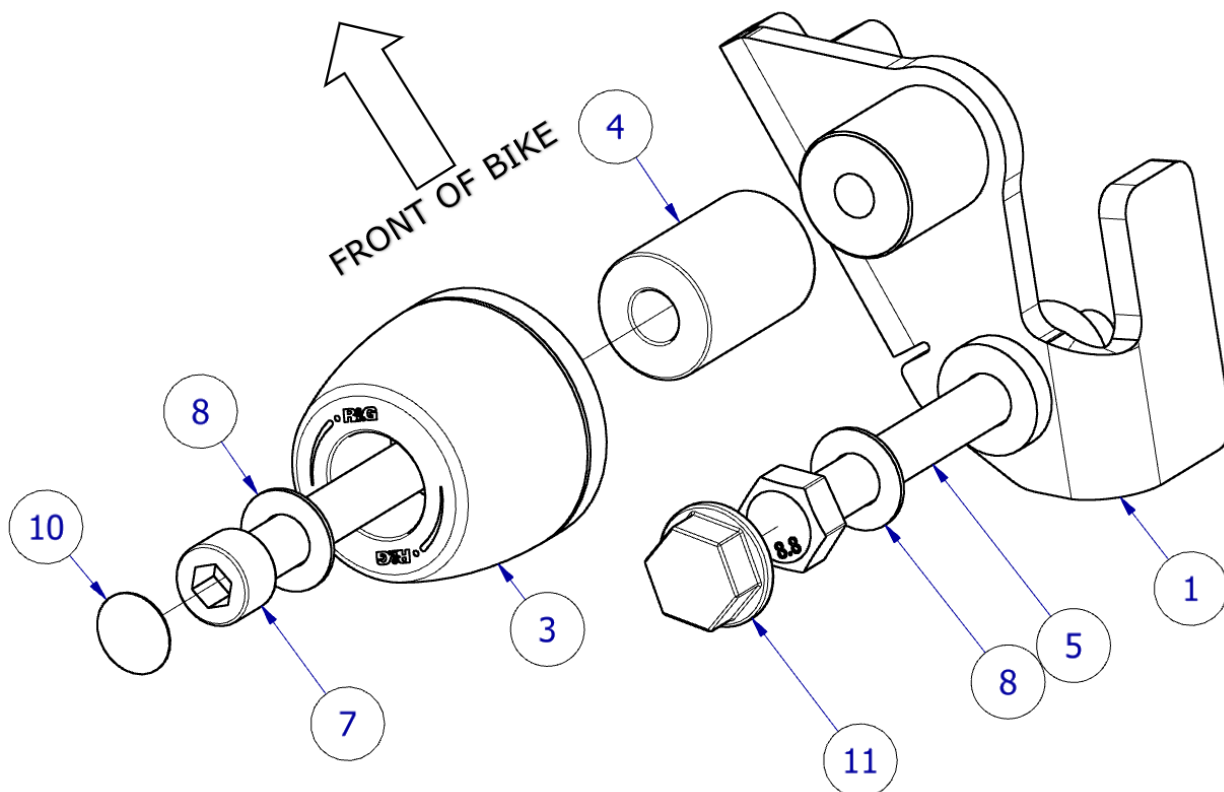
ARTICLE NO.	DESCRIPTION	QTÉ
ARTICLE 1	M0812 SUPPORT DE PROTECTION CRASH CÔTÉ GAUCHE	1
ARTICLE 2	M0813 SUPPORT DE PROTECTION CRASH CÔTÉ DROIT	1
ARTICLE 3	B0576 PROTECTION CRASH	2
ARTICLE 4	S0466 - 36mm ENTRETOISE DE PROTECTION CRASH CÔTÉ GAUCHE ET DROIT	2
ARTICLE 5	M10X1.5X100MM BOULON	1
ARTICLE 6	M10x1.5x70MM BOULON	1
ARTICLE 7	M10x1.25x80MM BOULON	2
ARTICLE 8	M10x20MM RONDELLE	4
ARTICLE 9	FEUILLE DE PROTECTION DU CADRE (150x100MM)	1
ARTICLE 10	NC0010 - M10 CAPUCHON DE BOULON	2
ARTICLE 11	NC0001 - M10 CAPUCHON DE BOULON	2

R&G

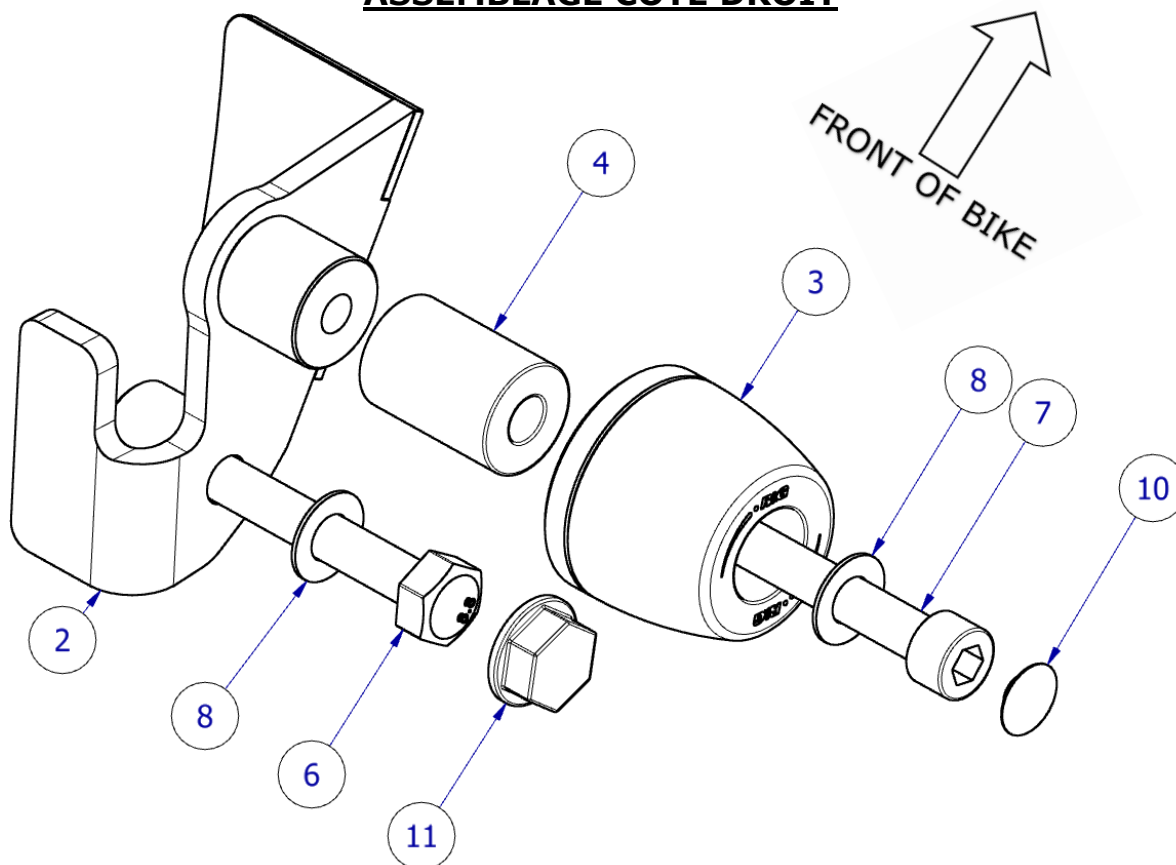
Unit 1, Shelley's Lane, East Worldham, Alton, Hampshire, GU34 3AQ
 Tel: +44 (0)1420 89007 www.rg-racing.com Email: info@rg-racing.com



ASSEMBLAGE CÔTÉ GAUCHE



ASSEMBLAGE CÔTÉ DROIT



R&G



PHOTO 1

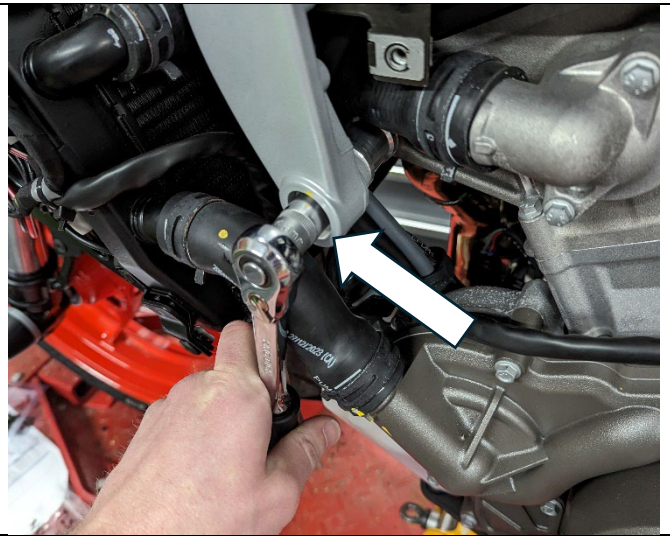


PHOTO 2

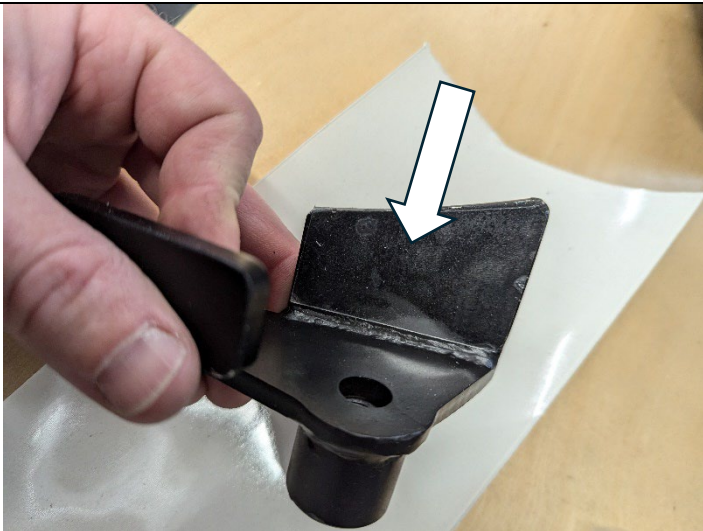


PHOTO 3

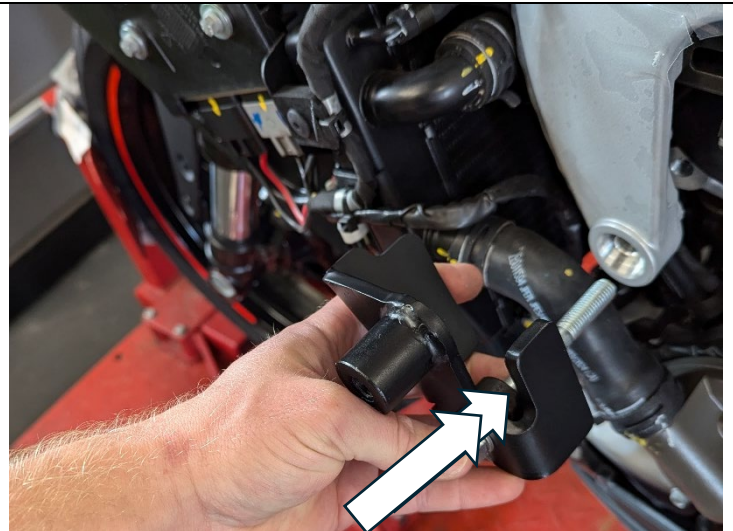


PHOTO 4



PHOTO 5



PHOTO 6



PHOTO 7



PHOTO 8

NOTICE DE MONTAGE

IMPORTANT : Avant de retirer les boulons du moteur, assurez-vous que la moto soit en position verticale et soutenue par un support moteur ou un cric approprié placé sous le carter de la moto pour supporter le poids partiel du moteur, cela empêchera le moteur de bouger pendant le montage.

NE RETIREZ PAS PLUS D'UN BOULON DU MOTEUR À LA FOIS.

Côté gauche

- Retirez la partie centrale du carénage gauche de la moto conformément à votre manuel d'entretien.
- Avec le moteur entièrement soutenu comme indiqué sur la photo 1, retirez le boulon du moteur indiqué par une flèche sur la photo 2.
- Présentez le support de protection crash côté gauche (article 1) et notez où il pourrait y avoir un contact entre le cadre de la moto et le support, coupez et appliquez le ruban de protection du cadre (article 9) sur le support comme indiqué sur la photo 3.

NOTE: Pour éviter de fausser le filetage, appliquez une pression vers l'avant sur le boulon et faites-le tourner dans le sens inverse des aiguilles d'une montre jusqu'à ce qu'un clic se fasse entendre, puis commencez à tourner dans le sens des aiguilles d'une montre et serrez.

- En vous référant au schéma d'assemblage côté gauche, à l'aide du boulon à tête hexagonale M10x100 mm (article 5) et de la rondelle M10 (article 8), fixez le support de protection crash côté gauche (article 1) en place, en vous assurant que l'entretoise se trouve dans le creux du cadre et que les languettes de support épousent le cadre comme indiqué sur la photo 4.
- Tout en maintenant le support en place de manière à ce qu'il soit au centre du cadre, serrez le boulon M10 selon les spécifications recommandées.
- Placez un capuchon de tête de boulon M10 (article 11) sur la tête du boulon.

Côté droit

- Retirez la partie centrale du carénage latéral droit de la moto conformément à votre manuel d'entretien.

R&G

Unit 1, Shelley's Lane, East Worldham, Alton, Hampshire, GU34 3AQ
Tel: +44 (0)1420 89007 www.rg-racing.com Email: info@rg-racing.com



- Une fois le moteur entièrement soutenu comme indiqué sur la photo 1, retirez le boulon du moteur indiqué par une flèche sur la photo 5.
- Présentez le support de protection crash côté droit (article 2) et notez les endroits où il pourrait y avoir un contact entre le cadre de la moto et le support, coupez et appliquez le ruban de protection du cadre (article 9) sur le support comme indiqué sur la photo 3.
- En vous référant au schéma d'assemblage côté droit, à l'aide du boulon à tête hexagonale M10x70 mm (article 6) et de la rondelle M10 (article 8), fixez le support de protection crash côté droit (article 2) en place, en vous assurant que l'entretoise se trouve dans le creux du cadre et que les languettes de support épousent le cadre comme indiqué sur la photo 6. Notez que la partie la plus fine du support doit se trouver entre le support de radiateur et le cadre.

NOTE: Pour éviter de fausser le filetage, appliquez une pression vers l'avant sur le boulon et faites-le tourner dans le sens inverse des aiguilles d'une montre jusqu'à ce qu'un clic se fasse entendre, puis commencez à tourner dans le sens des aiguilles d'une montre et serrez.

- Tout en maintenant le support en place de manière à ce qu'il soit centré sur le cadre, serrez le boulon M10 selon les spécifications recommandées.
- Placez un capuchon de tête de boulon M10 (article 11) sur la tête du boulon.

Des 2 côtés

- Assurez-vous que les deux boulons de moteur de remplacement soient correctement serrés, retirez le cric de sous le moteur
- Remontez tout le carénage sur la moto comme à l'origine, les supports de protection crash doivent être visibles comme indiqué sur la photo 7.
- En suivant le schéma de montage de chaque côté, installez une rondelle M10x20 (article 8) sur le boulon à tête cylindrique M10x80 mm (article 7) et faites glisser une protection crash (article 3) suivi d'une des entretoises de 36 mm (article 4) de sorte que la tête du boulon se trouve à l'intérieur de la protection crash et se présente sur le bossage exposé du support de protection crash comme indiqué sur la photo 7.
- Installez la protection crash dans le bossage exposé de chaque côté et serrez selon les spécifications recommandées à la page 2.
- Enfin, placez un capuchon de boulon à tête cylindrique M10 (article 10) dans chaque protection crash comme indiqué sur la photo 8.
- Avant de rouler, vérifiez que les deux côtés soient bien fixés.

Note : *Le couple de serrage des boulons du moteur/protection crash doit être vérifié à intervalles réguliers lors de l'entretien/réparation de routine.*

ISSUE 1 - 24/09/2024 - DM

CONSUMER NOTICE

The catalogue description and any exhibition of samples are only broad indications of the Products and R&G may make design changes which do not diminish their performance or visual appeal and supplying them in such state shall conform to the order. The Buyer acknowledges no representation or warranty (other than as to title) has been given or will apply to the Products other than those in R&G's order or confirmation and the Buyer confirms it has chosen the Products as being of merchantable quality and suitable for its particular purposes. Where R&G fits the Products or undertakes other services it shall exercise reasonable skill and care and rectify any fault free of charge unless the workmanship has been disturbed. The Buyer is responsible for ensuring that the warranty on the motorcycle is not affected by the fitting of the Products. On return of any defective Products R&G shall at its option either supply a replacement or refund the purchase money but shall not be liable if the Products have been modified or used or maintained otherwise than in accordance with R&G's or manufacturer's instructions and good engineering practice or if the defect arises from accident or neglect. Other than identified above and subject to R&G not limiting its liability for causing death and personal injury, it shall not be liable for indirect or consequential loss and otherwise its liability shall be limited to the amounts paid by the Buyer for the Products or the fitting or service concerned. These terms do not affect the Buyer's statutory rights.

R&G

Unit 1, Shelley's Lane, East Worldham, Alton, Hampshire, GU34 3AQ
Tel: +44 (0)1420 89007 www.rg-racing.com Email: info@rg-racing.com

**R&G RACING RETURNS POLICY (NON-FAULTY GOODS)**

Returns must be pre-authorized (if not pre-authorized the return will be rejected). Goods may only be returned direct to us if they were purchased direct from us (customer must prove if necessary). Otherwise to be returned to original vendor. Goods must be in re-sellable condition, in the opinion of R&G Racing. All returns are subject to a 25% restocking and handling fee (25% of the gross value exc. P&P – at the prevailing price at time of purchase). The customer must pay any and all carriage charges. No returns of discontinued products, unless within 14 days of purchase. This policy does not affect your statutory rights and does not refer to faulty goods.

R&G

Unit 1, Shelley's Lane, East Worldham, Alton, Hampshire, GU34 3AQ
Tel: +44 (0)1420 89007 www.rg-racing.com Email: info@rg-racing.com