



FITTING INSTRUCTIONS FOR DG0059PRO



THIS KIT CONTAINS THE ITEMS PICTURED AND LABELLED OVER PAGE.

SOME PARTS MAY BE SHOWN FOR CLARITY OF INSTRUCTIONS ONLY.

DO NOT PROCEED UNTIL YOU ARE SURE ALL PARTS ARE PRESENT.

PLEASE READ ALL INSTRUCTIONS BEFORE PROCEEDING.

**IF IN ANY DOUBT WHEN FITTING OUR PRODUCTS, CONSULT ONE OF OUR DEALERS
OR HAVE FITTED BY A QUALIFIED TECHNICIAN.**

PLEASE NOTE THAT THE WAY THE KIT IS PACKED DOES NOT NECESSARILY REPRESENT THE WAY OF
MOUNTING TO THE BIKE.

IN THE EVENT OF RUBBER WASHERS BEING USED TO HOLD COMPONENTS ONTO BOLTS,

THESE RUBBER WASHERS CAN BE THROWN AWAY.



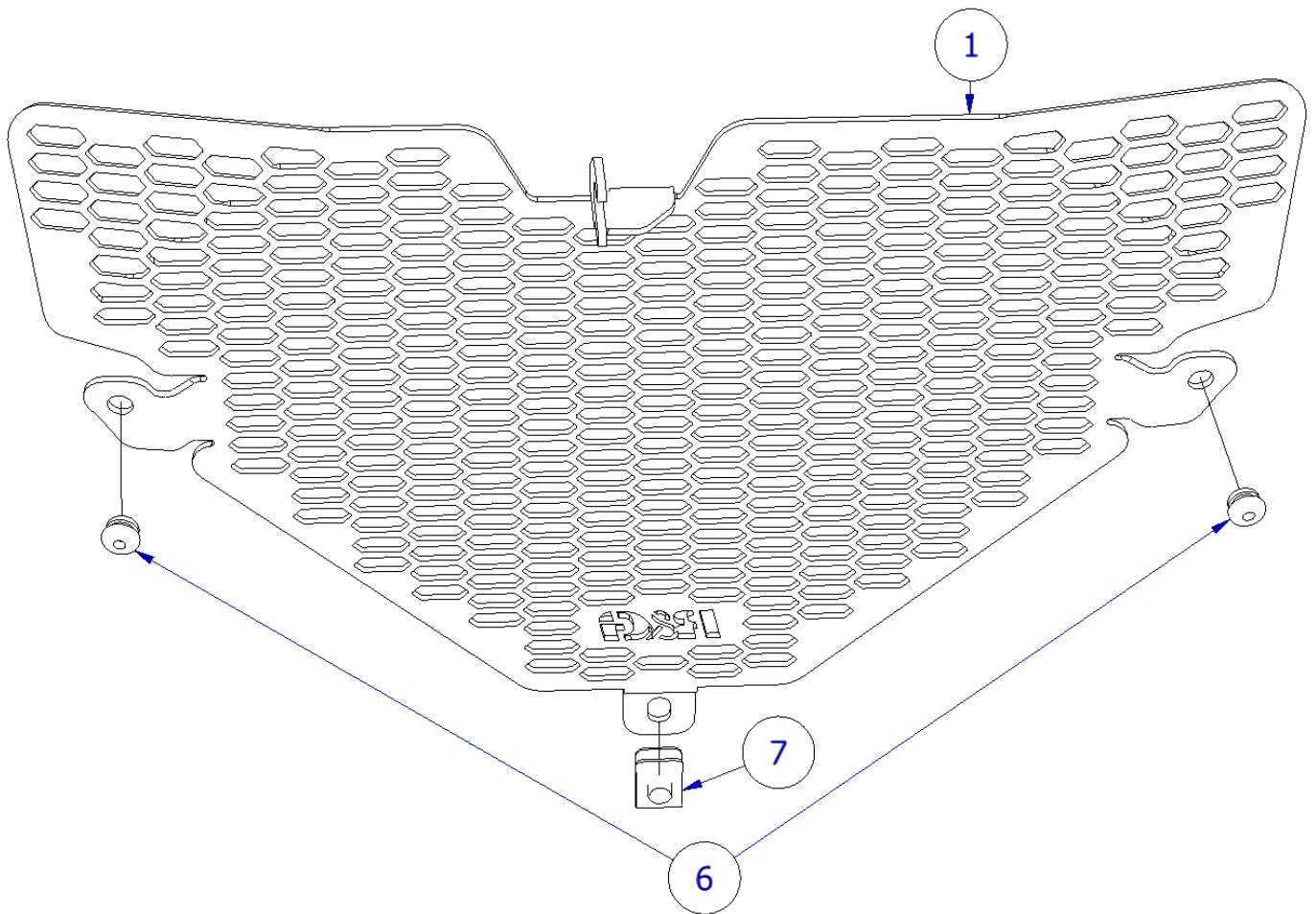
<u>TOOLS REQUIRED</u>	<u>GENERAL TORQUE SETTINGS</u>
<ul style="list-style-type: none"> • SET OF ALLEN KEYS • SET OF METRIC SPANNERS • SMALL HEX BIT RATCHET WITH PHILIPS BIT ATTACHMENT 	M4 BOLT = 8Nm M5 BOLT = 12Nm M6 BOLT = 15Nm M8 BOLT = 20Nm M10 BOLT = 40Nm M12 BOLT = 40Nm

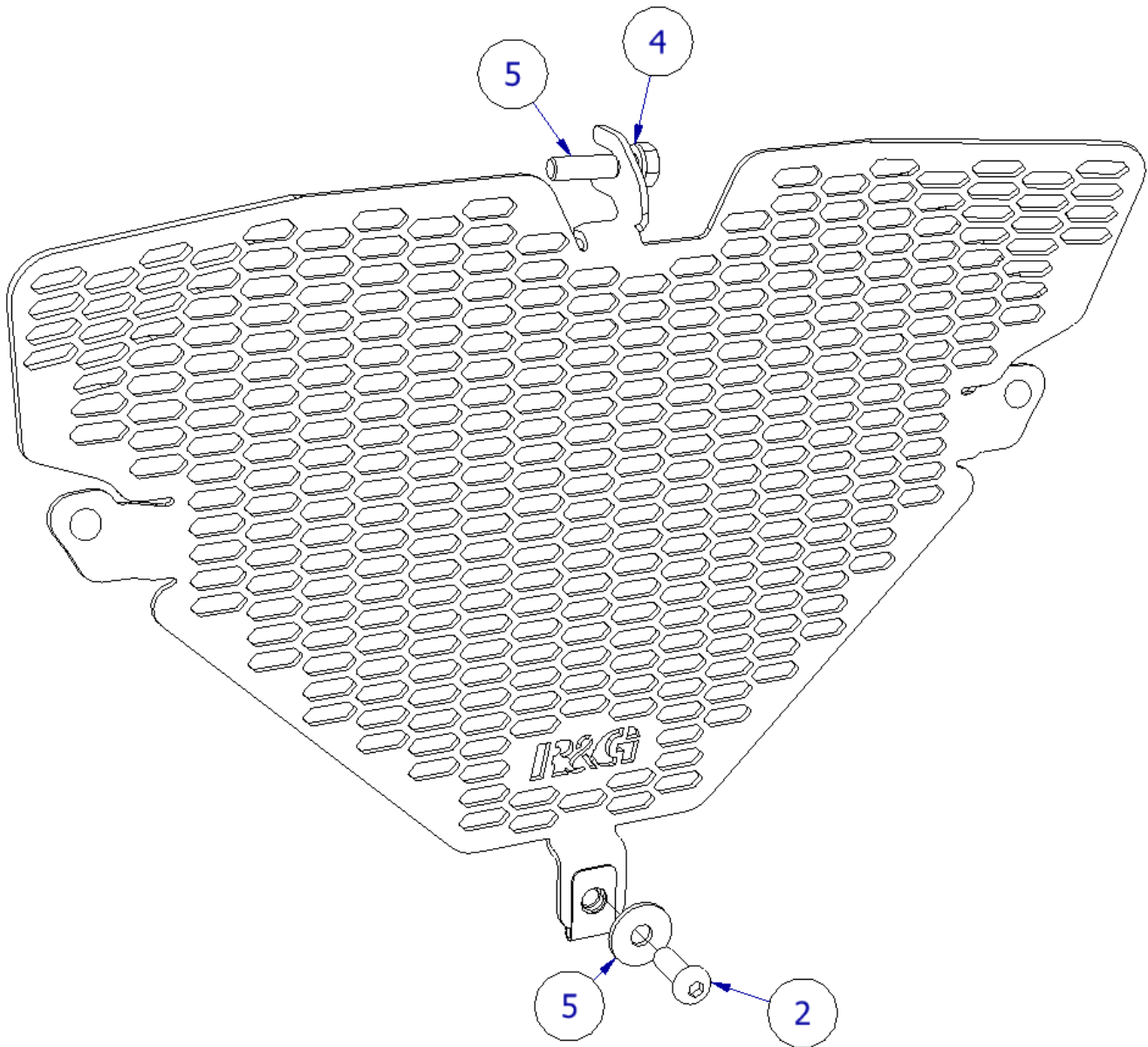
LEGEND

ITEM NO.	DESCRIPTION	QTY
ITEM 1	DOWNPIPE GRILLE COMPONENT	1
ITEM 2	15mm BUTTON HEAD BOLT	1
ITEM 3	20mm HEX HEAD BOLT	1
ITEM 4	12mm WASHER	1
ITEM 5	20mm WASHER	1
ITEM 6	RUBBER BUNG	2
ITEM 7	J-CLIP	1



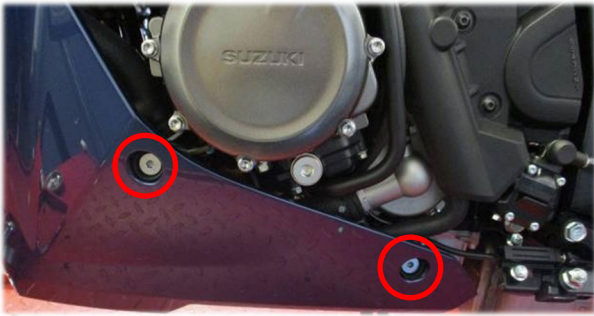
FITTING DIAGRAM



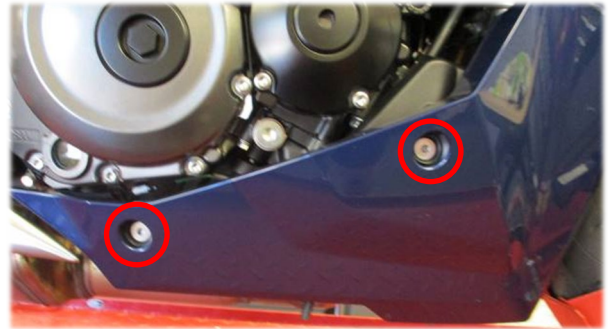




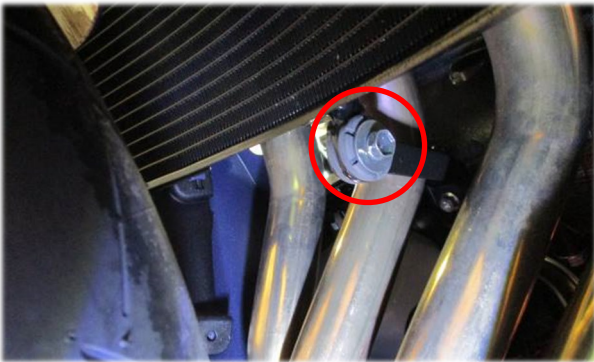
FITTING PICTURES



Picture 1



Picture 2



Picture 3

FITTING INSTRUCTIONS

Assembly:

- Insert the 2X supplied rubber bungs (**Item 6**) into the holes on the left- and right-hand side of the downpipe grille.
- Slide the J-clip into position on the bottom tab on the grille.

Dis-assembly:

- Remove the bolts in each side of the lower fairings, as shown in **Pictures 1** and **Picture 2**.
- Remove the bolt shown in **Picture 3** and replace it with the supplied 26mm hex head bolt and washer (**Item 3**). Tightening it just enough that the fork on the downpipe grille can be slotted onto it.

Re-assembly:

- Slide the downpipe grille into position, while prying the lower fairing panels apart.
- Once the R&G Downpipe Grille is in place, push the forked tab at the top of the grille onto the lower radiator mounting bolt that was left loose earlier in the process.
- Tighten the bolt (using a spanner or ideally a ratchet spanner) until slight resistance is felt, allowing the grille to be rotated freely without falling.
- Re-attach the lower fairings except for the push clip at the front of the belly pan.
- Manoeuvre the grille into a position where the J-clip on the grille and push clip hole on the belly pan align.
- Then push through the supplied button head bolt with washer (**Items 2 & 5**) and tighten to its required torque setting.
- Then fully tighten the upper mounting bolt
- Check all components are secure and all bolts are tight before riding.

R&G Racing

Unit 1, Shelley's Lane, East Worldham, Alton, Hampshire, GU34 3AQ

Tel: +44 (0)1420 89007 Fax: +44 (0)1420 87301 www.rg-racing.com Email: info@rg-racing.com



ISSUE 2 20/11/2024 TB

CONSUMER NOTICE

The catalogue description and any exhibition of samples are only broad indications of the Products and R&G may make design changes which do not diminish their performance or visual appeal and supplying them in such state shall conform to the order. The Buyer acknowledges no representation or warranty (other than as to title) has been given or will apply to the Products other than those in R&G's order or confirmation and the Buyer confirms it has chosen the Products as being of merchantable quality and suitable for its particular purposes. Where R&G fits the Products or undertakes other services it shall exercise reasonable skill and care and rectify any fault free of charge unless the workmanship has been disturbed. The Buyer is responsible for ensuring that the warranty on the motorcycle is not affected by the fitting of the Products. On return of any defective Products R&G shall at its option either supply a replacement or refund the purchase money but shall not be liable if the Products have been modified or used or maintained otherwise than in accordance with R&G's or manufacturer's instructions and good engineering practice or if the defect arises from accident or neglect. Other than identified above and subject to R&G not limiting its liability for causing death and personal injury, it shall not be liable for indirect or consequential loss and otherwise its liability shall be limited to the amounts paid by the Buyer for the Products or the fitting or service concerned. These terms do not affect the Buyer's statutory rights.

R&G RACING RETURNS POLICY (NON-FAULTY GOODS)

Returns must be pre-authorized (if not pre-authorized the return will be rejected). Goods may only be returned direct to us if they were purchased direct from us (customer must prove if necessary). Otherwise to be returned to original vendor. Goods must be in re-sellable condition, in the opinion of R&G Racing. All returns are subject to a 25% restocking and handling fee (25% of the gross value exc. P&P – at the prevailing price at time of purchase). The customer must pay any and all carriage charges. No returns of discontinued products, unless within 14 days of purchase. This policy does not affect your statutory rights and does not refer to faulty goods.

R&G Racing

Unit 1, Shelley's Lane, East Worldham, Alton, Hampshire, GU34 3AQ

Tel: +44 (0)1420 89007 Fax: +44 (0)1420 87301 www.rg-racing.com Email: info@rg-racing.com



NOTICE DE MONTAGE POUR DG0059PRO



CE KIT CONTIENT LES ARTICLES ILLUSTRÉS ET ÉTIQUETES SUR LA PAGE.

CERTAINES PARTIES PEUVENT ÊTRE PRÉSENTES UNIQUEMENT POUR LA CLARTÉ DES INSTRUCTIONS.

NE PAS PROCÉDER AU MONTAGE TANT QUE VOUS N'ÊTES PAS SÛR QUE TOUTES LES PIÈCES SOIENT PRÉSENTES.

VEUILLEZ LIRE TOUTES LES INSTRUCTIONS AVANT DE CONTINUER.

EN CAS DE DOUTE LORS DU MONTAGE DE NOS PRODUITS, CONSULTEZ UN DE NOS REVENDEURS OU FAITES APPEL À UN TECHNICIEN QUALIFIÉ.

VEUILLEZ NOTER QUE LA FAÇON DONT LE KIT EST EMBALLÉ NE REPRÉSENTE PAS NECESSAIREMENT LA MANIÈRE DE LE MONTER SUR LA MOTO.

SI DES RONDELLES EN CAOUTCHOUC SONT UTILISÉES POUR MAINTENIR LES COMPOSANTS SUR LES BOULONS, ELLES PEUVENT ÊTRE JETÉES.

NOTICE DISPONIBLE AU TÉLÉCHARGEMENT SUR :

WWW.RG-RACING.COM

R&G Racing

Unit 1, Shelley's Lane, East Worldham, Alton, Hampshire, GU34 3AQ

Tel: +44 (0)1420 89007 Fax: +44 (0)1420 87301 www.rg-racing.com Email: info@rg-racing.com



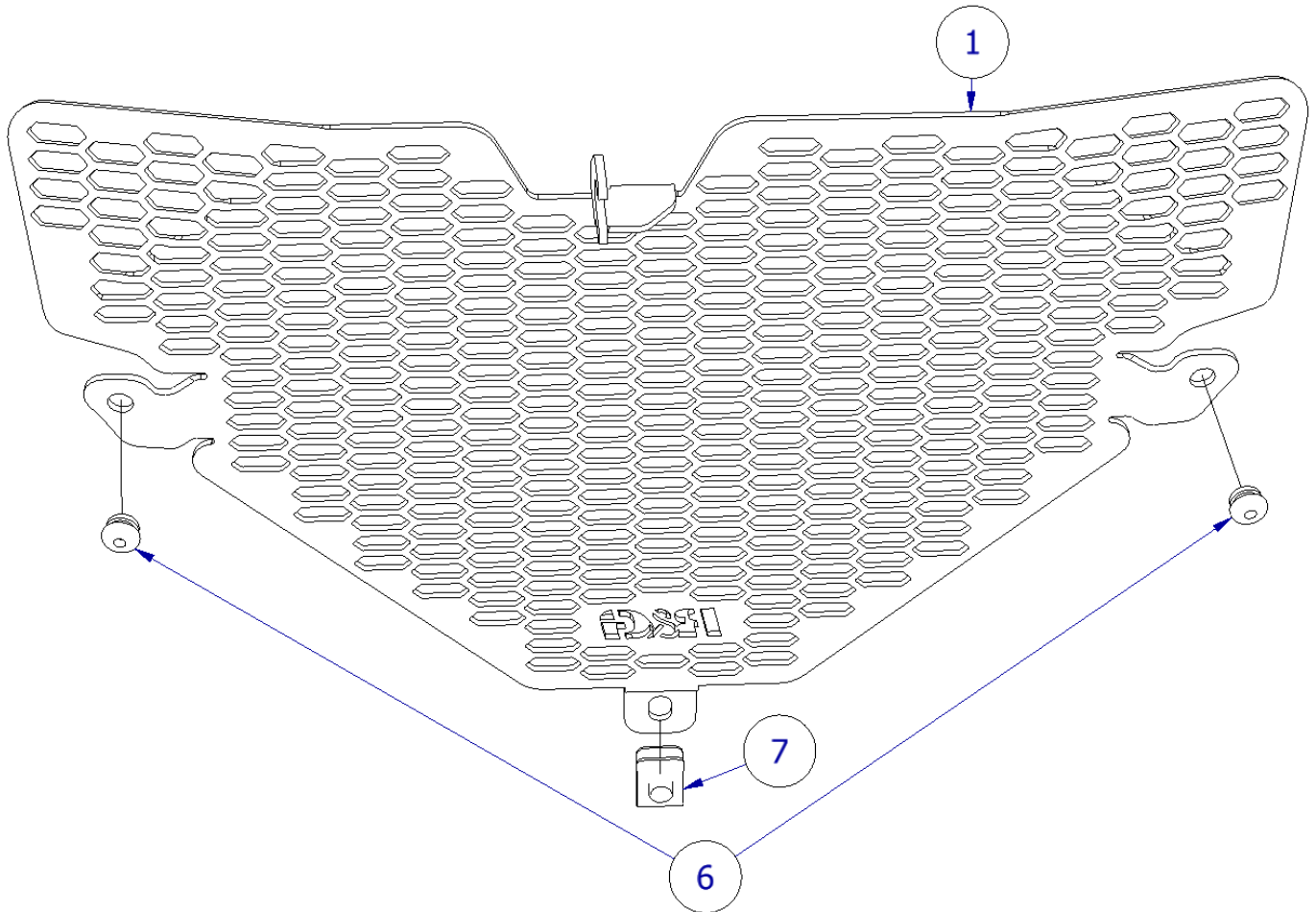
<u>OUTILS REQUIS</u>	<u>VALEURS DE SERRAGE</u>
<ul style="list-style-type: none"> • CLÉS ALLEN • CLÉ À MOLETTE • CLIQUET À PETIT EMBOUT HEXAGONAL AVEC FIXATION D'EMBOUT CRUCIFORME 	<p>M4 BOULON = 8Nm M5 BOULON = 12Nm M6 BOULON = 15Nm M8 BOULON = 20Nm M10 BOULON = 40Nm M12 BOULON = 40Nm</p>

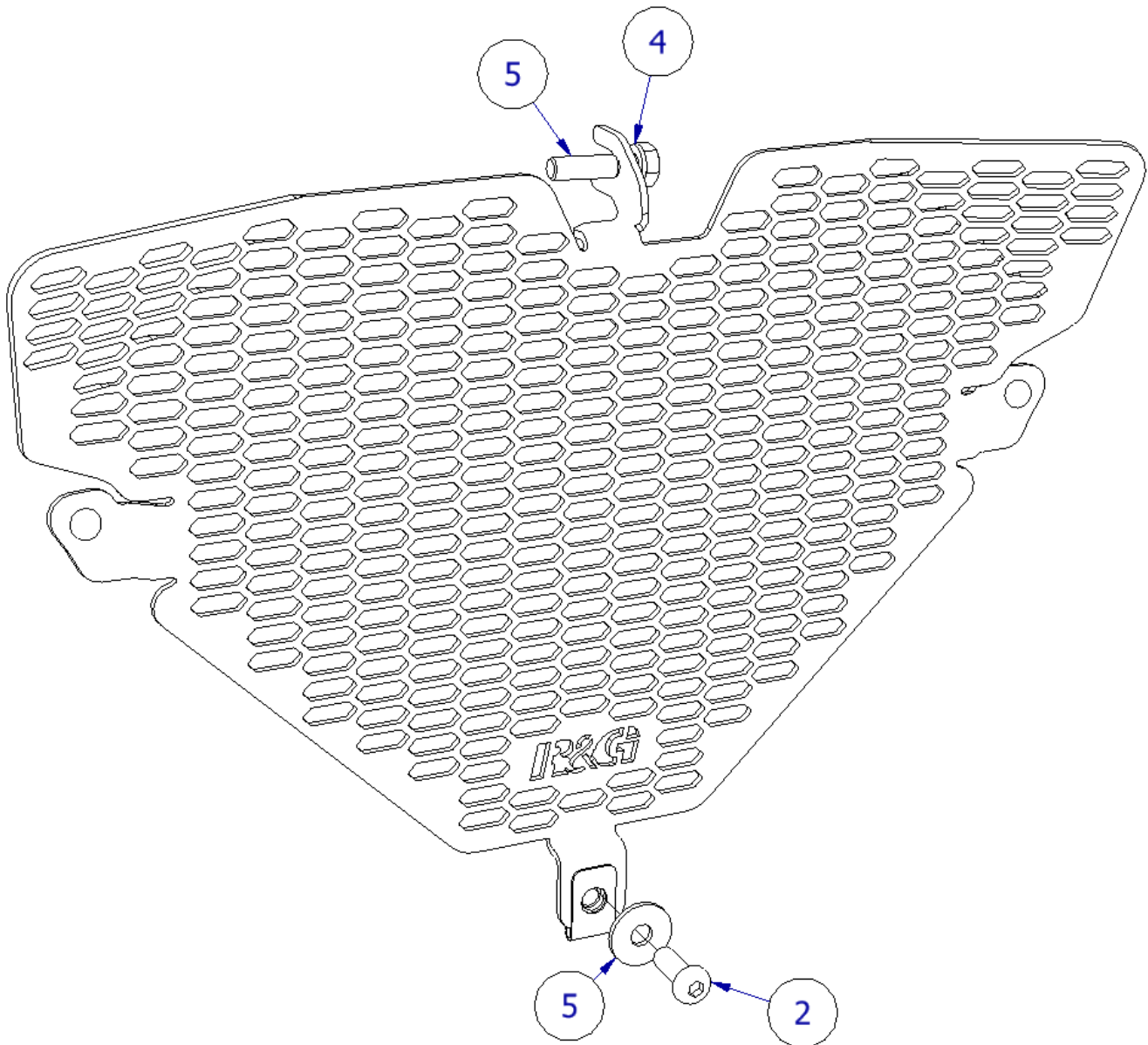
LÉGENDE

ARTICLE NO.	DESCRIPTION	QTÉ
ARTICLE 1	COMPOSANT DE GRILLE DE PROTECTION	1
ARTICLE 2	15mm BOULON	1
ARTICLE 3	20mm BOULON	1
ARTICLE 4	12mm RONDELLE	1
ARTICLE 5	20mm RONDELLE	1
ARTICLE 6	RONDELLE EN CAOUTCHOUC	2
ARTICLE 7	J-CLIP	1



SCHÉMA DE MONTAGE







PHOTOS DE MONTAGE

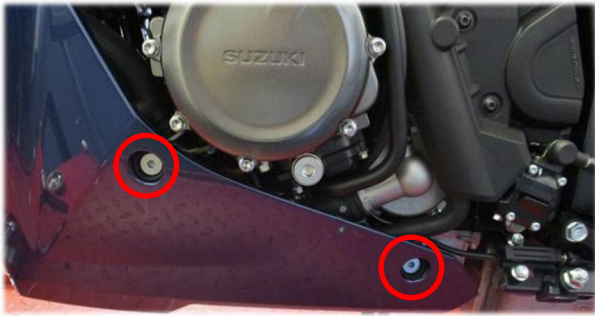


Photo 1

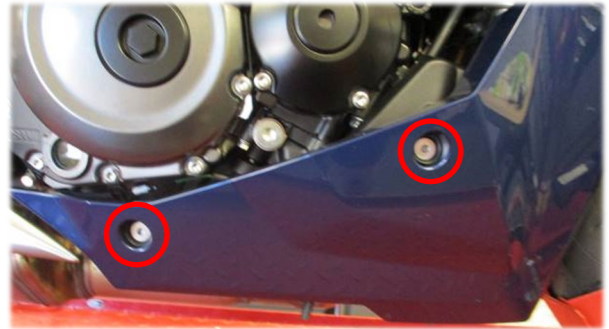


Photo 2



Photo 3

NOTICE DE MONTAGE

Assemblage:

- Insérez les 2 bouchons en caoutchouc fournis (article 6) dans les trous situés sur les côtés gauche et droit de la grille de protection.
- Faites glisser le clip en J en position sur la languette inférieure de la grille.

Désassemblage:

- Retirez les boulons de chaque côté des carénages inférieurs, comme indiqué sur les photos 1 et 2.
- Retirez le boulon indiqué sur la photo 3 et remplacez-le par le boulon à tête hexagonale de 26 mm et la rondelle fournis (article 3). Serrez-le juste assez pour que la fourche de la grille de protection puisse y être insérée..

Ré-assemblage:

- Faites glisser la grille de protection en position, tout en écartant les panneaux de carénage inférieurs.
- Une fois la grille de protection R&G en place, poussez la languette fourchue en haut de la grille sur le boulon de montage du radiateur inférieur qui était desserré plus tôt dans le processus.
- Serrez le boulon (à l'aide d'une clé ou idéalement d'une clé à cliquet) jusqu'à ce qu'une légère résistance soit ressentie, permettant à la grille de tourner librement sans tomber.
- Rattachez les carénages inférieurs à l'exception du clip de poussée à l'avant du sabot moteur.
- Manœuvrez la grille dans une position où le clip en J sur la grille et le trou du clip de poussée sur le sabot moteur s'alignent.
- Poussez ensuite à travers le boulon à tête bombée fourni avec la rondelle (articles 2 et 5) et serrez au couple de serrage requis.
- Serrez ensuite complètement le boulon de montage supérieur.

R&G Racing

Unit 1, Shelley's Lane, East Worldham, Alton, Hampshire, GU34 3AQ

Tel: +44 (0)1420 89007 Fax: +44 (0)1420 87301 www.rg-racing.com Email: info@rg-racing.com



- Vérifiez que tous les composants soient sécurisés et que tous les boulons soient serrés avant de rouler.

ISSUE 2 20/11/2024 TB

CONSUMER NOTICE

The catalogue description and any exhibition of samples are only broad indications of the Products and R&G may make design changes which do not diminish their performance or visual appeal and supplying them in such state shall conform to the order. The Buyer acknowledges no representation or warranty (other than as to title) has been given or will apply to the Products other than those in R&G's order or confirmation and the Buyer confirms it has chosen the Products as being of merchantable quality and suitable for its particular purposes. Where R&G fits the Products or undertakes other services it shall exercise reasonable skill and care and rectify any fault free of charge unless the workmanship has been disturbed. The Buyer is responsible for ensuring that the warranty on the motorcycle is not affected by the fitting of the Products. On return of any defective Products R&G shall at its option either supply a replacement or refund the purchase money but shall not be liable if the Products have been modified or used or maintained otherwise than in accordance with R&G's or manufacturer's instructions and good engineering practice or if the defect arises from accident or neglect. Other than identified above and subject to R&G not limiting its liability for causing death and personal injury, it shall not be liable for indirect or consequential loss and otherwise its liability shall be limited to the amounts paid by the Buyer for the Products or the fitting or service concerned. These terms do not affect the Buyer's statutory rights.

R&G RACING RETURNS POLICY (NON-FAULTY GOODS)

Returns must be pre-authorized (if not pre-authorized the return will be rejected). Goods may only be returned direct to us if they were purchased direct from us (customer must prove if necessary). Otherwise to be returned to original vendor. Goods must be in re-sellable condition, in the opinion of R&G Racing. All returns are subject to a 25% restocking and handling fee (25% of the gross value exc. P&P – at the prevailing price at time of purchase). The customer must pay any and all carriage charges. No returns of discontinued products, unless within 14 days of purchase. This policy does not affect your statutory rights and does not refer to faulty goods.

R&G Racing

Unit 1, Shelley's Lane, East Worldham, Alton, Hampshire, GU34 3AQ

Tel: +44 (0)1420 89007 Fax: +44 (0)1420 87301 www.rg-racing.com Email: info@rg-racing.com