



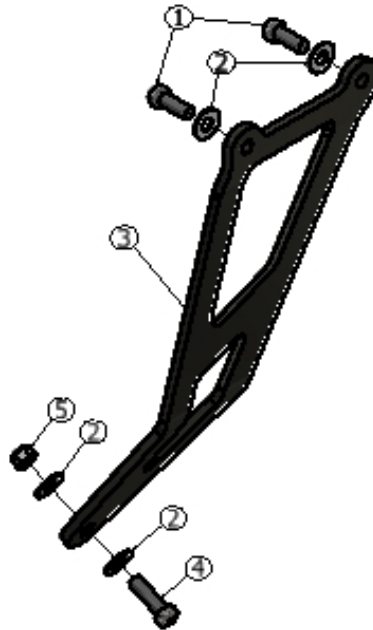
FITTING INSTRUCTIONS FOR EH0075BK EXHAUST HANGER
HONDA CBR 250RR 2017-



THIS KIT CONTAINS THE ITEMS PICTURED AND LABELLED BELOW.
DO NOT PROCEED UNTIL YOU ARE SURE ALL PARTS ARE PRESENT.

Please note that the way the kit is packed does not necessarily represent the way of mounting to the bike.

THE PARTS SHOWN MAY BE REPRESENTATIVE ONLY (FOR CLARITY OF INSTRUCTIONS ONLY)



R&G Racing
Unit 1, Shelley's Lane, East Worldham, Alton, Hampshire, GU34 3AQ
Tel: +44 (0)1420 89007 Fax: +44 (0)1420 87301 www.rg-racing.com Email: info@rg-racing.com



LEGEND

- ITEM 1 = M8 x 20mm LONG BUTTON HEAD BOLTS (x2)
- ITEM 2 = M8 WASHERS (x4)
- ITEM 3 = R&G EXHAUST HANGER (HB0075) (x1)
- ITEM 4 = M8 x 25mm LONG BUTTON HEAD BOLT (x1)
- ITEM 5 = M8 NYLOC NUT (x1)

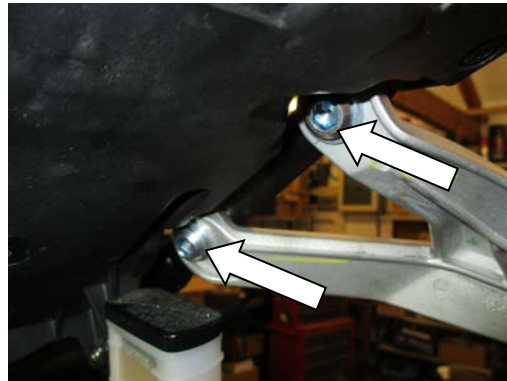
TOOLS REQUIRED

- Set of metric Allen keys to include 5 & 6mm A/F sizes.
 - 12mm & 13mm spanner.

Please note that in cases where kits are packed with rubber washers holding the components onto the bolt – *the rubber washers should be thrown away!*



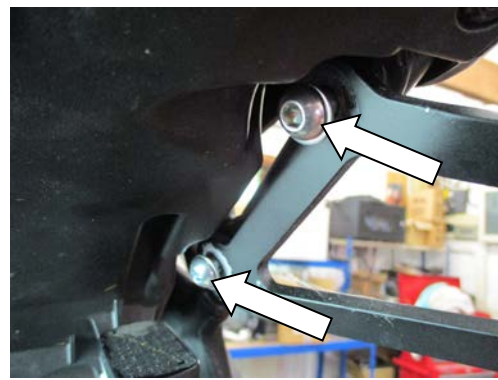
PICTURE 1



PICTURE 2



PICTURE 3



PICTURE 4



- Remove the bolt arrowed in Picture 1 using a 12mm spanner and M8 nut located behind the OEM exhaust hanger with a 13mm spanner. Remove the bolt and its nut from the OEM exhaust hanger.
- From the underside of the OEM exhaust hanger, remove the top two bolts arrowed in Picture 2 using an 8mm Allen key. Please note to keep the OEM exhaust hanger supported at all time during this process. Remove the OEM exhaust hanger.
- From the kit, take the new Exhaust hanger and locate it to the sub-frame as original with the bottom mount sits in front of the exhaust bracket as shown in Picture 3. Insert a longer M8 bolt (Item 4) with an M8 washer (item 2) from the front face of the bottom mount and secure using an M8 nyloc nut (Item 5) with an M8 washer (Item 2) from the protruded end of the bolt. Do not fully tighten the bolt at this stage.
- Align the two exhaust hanger top mounts to the mounts on sub-frame as original. Secure using the remaining two M8 bolts (Item 1) with M8 washers (Item 2). Arrowed in Picture 4.
- Tighten all three bolts and the M8 nyloc nut to a specified torque setting.
- Please ensure when the motorcycle is being used that no parts are in such a position that they may collide/damage other bike parts (this is particularly important if using after-market cans or exhaust systems).

Please note that it is your responsibility to ensure that no part of the exhaust hanger or exhaust assembly fouls or comes into contact with other parts of the machine. Do not ride the motorcycle until this aspect has been verified and you have compressed the rear suspension (if appropriate to the design of the motorcycle) to test this thoroughly.

ISSUE 1 19/06/2017 (HH)

CONSUMER NOTICE

The catalogue description and any exhibition of samples are only broad indications of the Products and R&G may make design changes which do not diminish their performance or visual appeal and supplying them in such state shall conform to the order. The Buyer acknowledges no representation or warranty (other than as to title) has been given or will apply to the Products other than those in R&G's order or confirmation and the Buyer confirms it has chosen the Products as being of merchantable quality and suitable for its particular purposes. Where R&G fits the Products or undertakes other services it shall exercise reasonable skill and care and rectify any fault free of charge unless the workmanship has been disturbed. The Buyer is responsible for ensuring that the warranty on the motorcycle is not affected by the fitting of the Products. On return of any defective Products R&G shall at its option either supply a replacement or refund the purchase money but shall not be liable if the Products have been modified or used or maintained otherwise than in accordance with R&G's or manufacturer's instructions and good engineering practice or if the defect arises from accident or neglect. Other than identified above and subject to R&G not limiting its liability for causing death and personal injury, it shall not be liable for indirect or consequential loss and otherwise its liability shall be limited to the amounts paid by the Buyer for the Products or the fitting or service concerned. These terms do not affect the Buyer's statutory rights.

R&G RACING RETURNS POLICY (NON-FAULTY GOODS)

Returns must be pre-authorized (if not pre-authorized the return will be rejected). Goods may only be returned direct to us if they were purchased direct from us (customer must prove if necessary). Otherwise to be returned to original vendor. Goods must be in re-sellable condition, in the opinion of R&G Racing. All returns are subject to a 25% restocking and handling fee (25% of the gross value exc. P&P – at the prevailing price at time of purchase). The customer must pay any and all carriage charges. No returns of discontinued products, unless within 14 days of purchase. This policy does not affect your statutory rights and does not refer to faulty goods.

R&G Racing
Unit 1, Shelley's Lane, East Worldham, Alton, Hampshire, GU34 3AQ
Tel: +44 (0)1420 89007 Fax: +44 (0)1420 87301 www.rg-racing.com Email: info@rg-racing.com



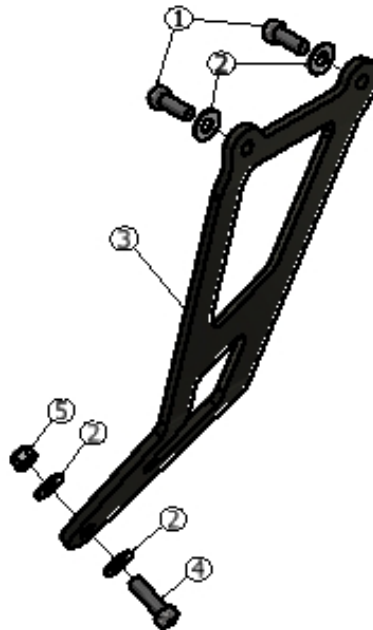
NOTICE DE MONTAGE POUR EH0075BK SUPPORT POT D'ÉCHAPPEMENT
HONDA CBR 250RR 2017-



Le kit contient les articles exposés ci-dessous, vérifier que toutes les pièces soient présentes avant de procéder au montage.

La façon dont le kit est emballé ne correspond pas forcément à la façon de monter les pièces sur la moto.

LES PARTIES PRESENTÉES PEUVENT ÊTRE UNIQUEMENT REPRESENTATIVES (POUR LA CLARTE DES INSTRUCTIONS UNIQUEMENT)





LEGENDE

ARTICLE 1 = M8 x 20mm BOULONS (x2).

ARTICLE 2 = M8 RONDELLES (x4)

ARTICLE 3 = R&G SUPPORT POT D'ÉCHAPPEMENT (HB0075) (x1)

ARTICLE 4 = M8 x 25mm BOULON (x1)

ARTICLE 5 = M8 ECROU (x1).

OUTILS REQUIS

- Clés Allen 5 & 6mm
- Clé à cliquet + douilles 12 & 13mm.

Notez que si les kits sont emballés avec des rondelles en caoutchouc servant à tenir les composants, *ces rondelles doivent être jetées !*



PHOTO 1

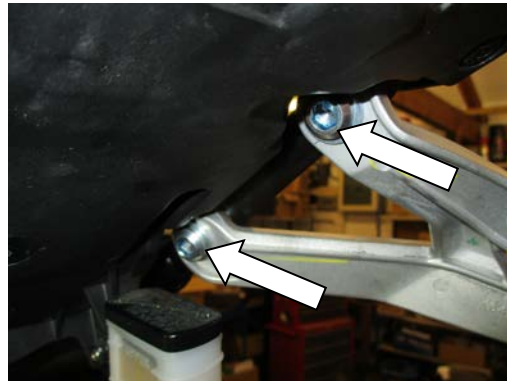


PHOTO 2



PHOTO 3

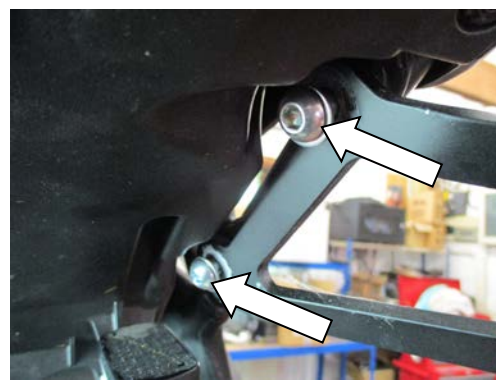


PHOTO 4



- Enlever le boulon indiqué sur la Photo 1 en utilisant une clé à molette 12mm et un écrou M8 placé derrière le support pot d'échappement d'origine avec une clé à molette 13mm. Enlever le boulon et son écrou du support pot d'échappement d'origine.
- Depuis le dessous du support pot d'échappement d'origine, enlever les 2 boulons supérieurs indiqués sur la Photo 2 en utilisant une clé Allen 8mm. Notez qu'il faut supporter le support de pot d'échappement d'origine durant l'opération. Enlever le support pot d'échappement d'origine.
- Dans le kit, prendre le nouveau support pot d'échappement et placez le sur le sous-cadre comme à l'origine avec le support du bas placé devant le support pot d'échappement, voir Photo 3. Insérer un boulon M8 (article 4) avec une rondelle M8 (article 2) depuis la face avant du support inférieur puis fixer avec un écrou M8 (Article 5) et une rondelle M8 (Article 2) sur l'extrémité dépassante du boulon. Ne pas serrer complètement à ce stade.
- Aligner les 2 supports supérieurs de support de pot d'échappement sur les supports du sous-cadre d'origine. Fixer en utilisant les 2 boulons M8 restants (Article 1) avec des rondelles M8 (Article 2). Voir Photo 4.
- Serrer les 3 boulons et l'écrou M8 à la valeur de serrage recommandée.
- Veiller à ce qu'aucune partie de la moto ne puisse heurter d'autres parties de la moto lors de l'usage de la moto. (Cela est particulièrement important si le pot d'échappement n'est pas d'origine).

Il est de votre responsabilité de veiller à ce qu'aucune partie du support de pot d'échappement ne puisse entrer en contact avec d'autres parties de la moto. Ne pas utiliser la moto tant que ce point n'a pas été vérifié, en ayant compresser l'amortisseur arrière (si le design de la moto le permet).

ISSUE 1 19/06/2017 (HH)

CONSUMER NOTICE

The catalogue description and any exhibition of samples are only broad indications of the Products and R&G may make design changes which do not diminish their performance or visual appeal and supplying them in such state shall conform to the order. The Buyer acknowledges no representation or warranty (other than as to title) has been given or will apply to the Products other than those in R&G's order or confirmation and the Buyer confirms it has chosen the Products as being of merchantable quality and suitable for its particular purposes. Where R&G fits the Products or undertakes other services it shall exercise reasonable skill and care and rectify any fault free of charge unless the workmanship has been disturbed. The Buyer is responsible for ensuring that the warranty on the motorcycle is not affected by the fitting of the Products. On return of any defective Products R&G shall at its option either supply a replacement or refund the purchase money but shall not be liable if the Products have been modified or used or maintained otherwise than in accordance with R&G's or manufacturer's instructions and good engineering practice or if the defect arises from accident or neglect. Other than identified above and subject to R&G not limiting its liability for causing death and personal injury, it shall not be liable for indirect or consequential loss and otherwise its liability shall be limited to the amounts paid by the Buyer for the Products or the fitting or service concerned. These terms do not affect the Buyer's statutory rights.

R&G RACING RETURNS POLICY (NON-FAULTY GOODS)

Returns must be pre-authorized (if not pre-authorized the return will be rejected). Goods may only be returned direct to us if they were purchased direct from us (customer must prove if necessary). Otherwise to be returned to original vendor. Goods must be in re-sellable condition, in the opinion of R&G Racing. All returns are subject to a 25% restocking and handling fee (25% of the gross value exc. P&P – at the prevailing price at time of purchase). The customer must pay any and all carriage charges. No returns of discontinued products, unless within 14 days of purchase. This policy does not affect your statutory rights and does not refer to faulty goods.

R&G Racing

Unit 1, Shelley's Lane, East Worldham, Alton, Hampshire, GU34 3AQ

Tel: +44 (0)1420 89007 Fax: +44 (0)1420 87301 www.rg-racing.com Email: info@rg-racing.com