



HWP0002

FITTING INSTRUCTIONS FOR HWP0002
UNIVERSAL HIGHWAY PEGS TO BE FITTED ON 22mm and 25mm BARS

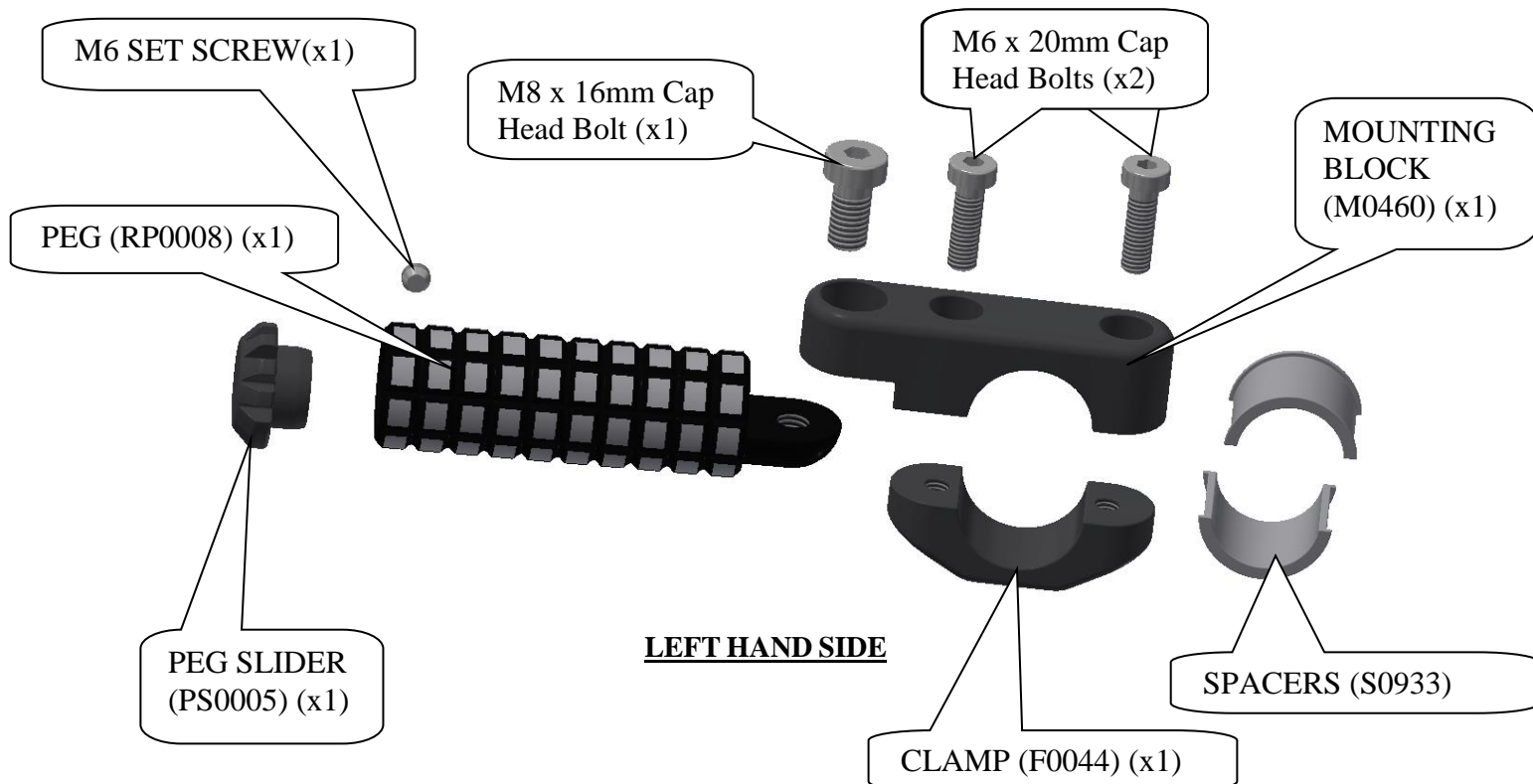
Page | 1



THIS KIT CONTAINS THE ITEMS PICTURED AND LABELLED BELOW.
DO NOT PROCEED UNTIL YOU ARE SURE ALL PARTS ARE PRESENT.

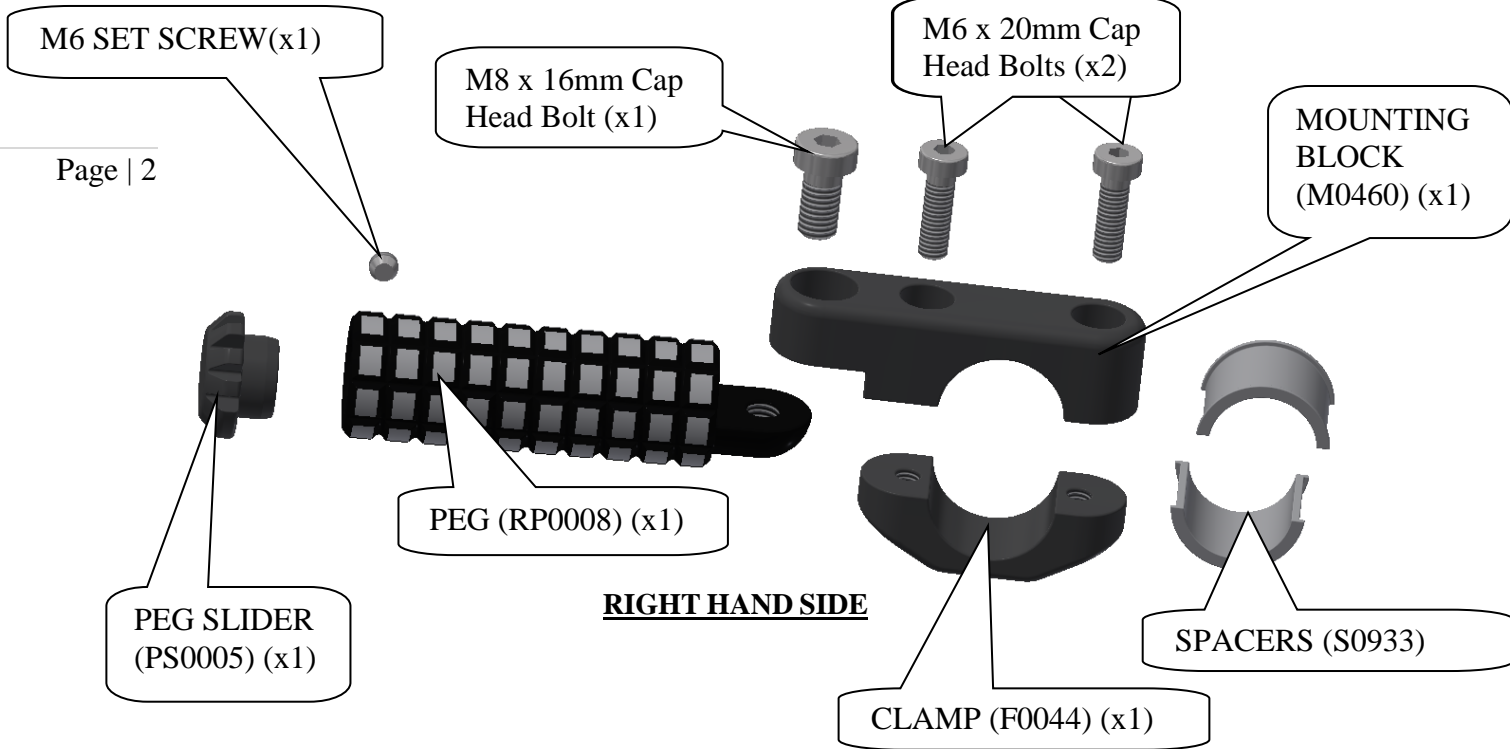
Please note that the way the kit is packed does not necessarily represent the way of mounting to the bike

THE PARTS SHOWN MAY BE REPRESENTATIVE ONLY (FOR CLARITY OF INSTRUCTIONS ONLY)





HWP0002



Page | 2

Please note that in cases where kits are packed with rubber washers holding the components onto the bolt – *the rubber washers should be thrown away!*

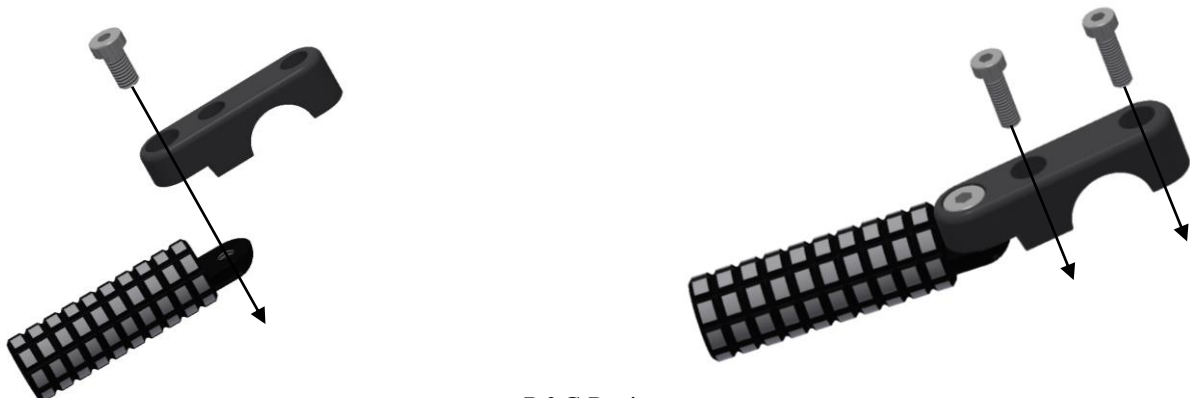
TOOLS REQUIRED

- Set of metric Allen keys to include 3, 5 and 6mm A-F.

FITTING INSTRUCTIONS

LEFT HAND SIDE

- Place one of the M8 cap head bolts through one of the mounting blocks (M0460) so the head of the bolt fits into the counter-bore as shown below left.



R&G Racing

Unit 1, Shelley's Lane, East Worldham, Alton, Hampshire, GU34 3AQ

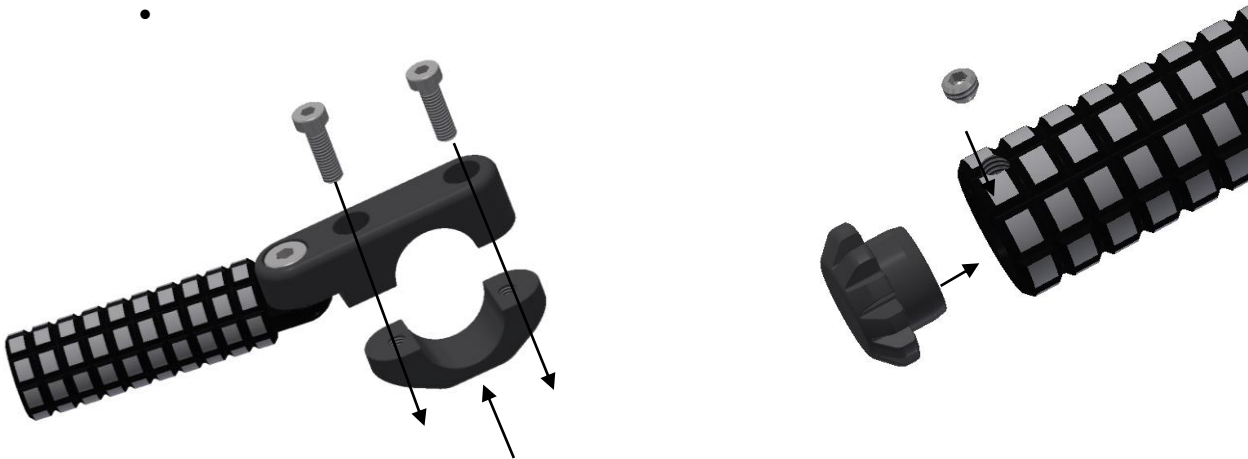
Tel: +44 (0)1420 89007 Fax: +44 (0)1420 87301 www.rg-racing.com Email: info@rg-racing.com



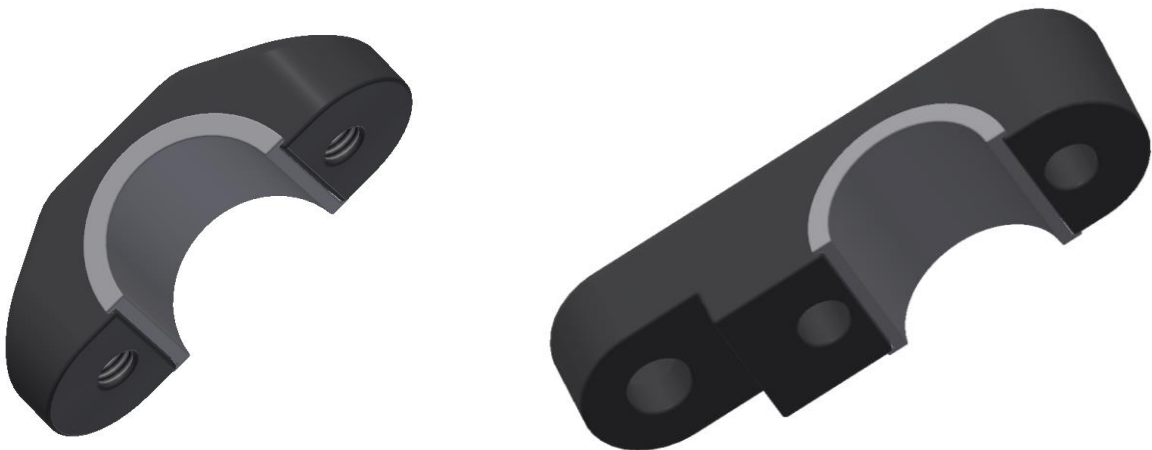
HWP0002

Page | 3

- Engage the exposed thread into the thread in the peg (RP0008) as shown above left (do not tighten at this stage).
- Place two of the M6 cap head bolts into the mounting block (M0460) so the heads of the bolts fit into the counter-bores in the mounting block as shown above right.
- Offer this assembly into position as shown in the top left picture ensuring the peg is in a comfortable and usable position.
- Place one of the clamps (F0044) into position and tighten the two M6 bolts as shown below left.
-



- Place the slider (PS0005) into the peg and lock into position using the set screw as shown above right.
- If fitting onto 22mm bars we have included spacers/shims (S0933) to make this possible as shown below.



- The assembly may be removed or rotated when not in use.

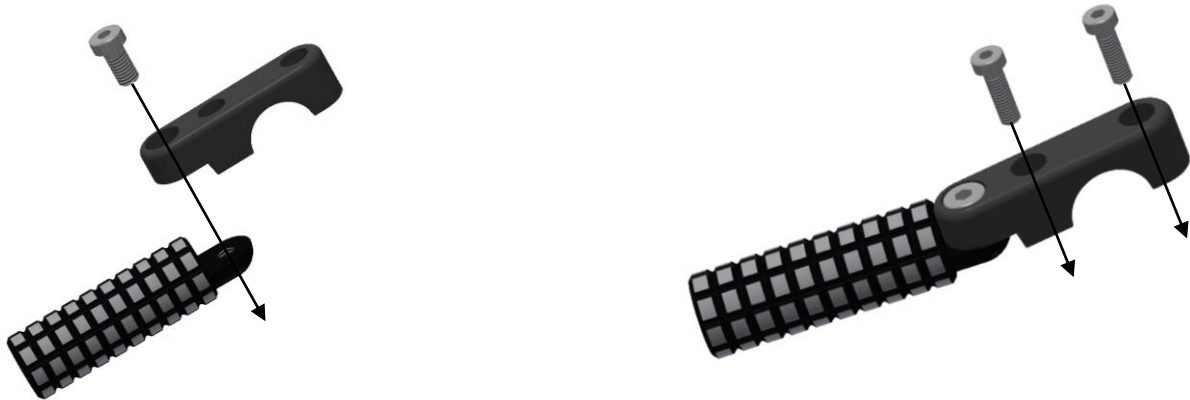


HWP0002

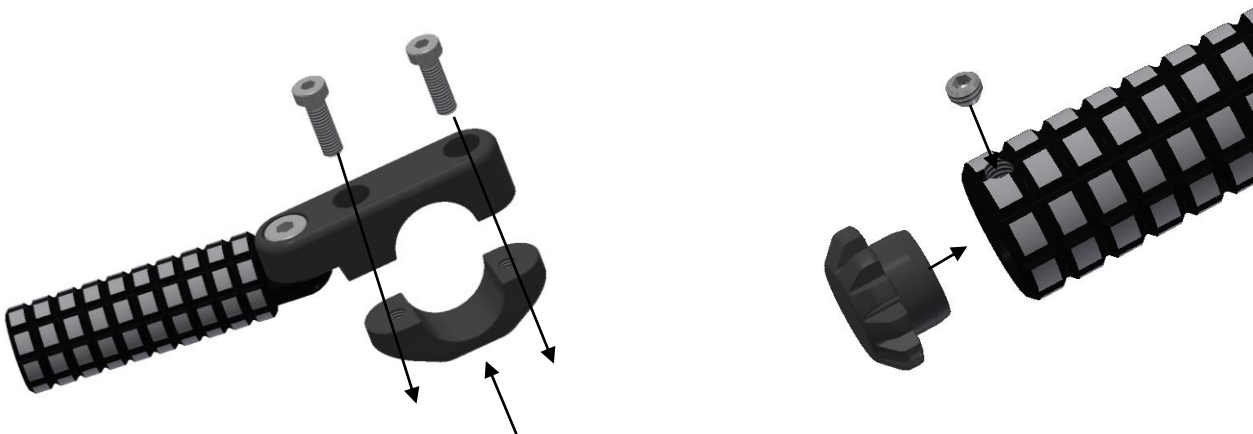
RIGHT HAND SIDE

- Place one of the M8 cap head bolts through one of the mounting blocks (M0460) so the head of the bolt fits into the counter-bore as shown below left.
-

Page



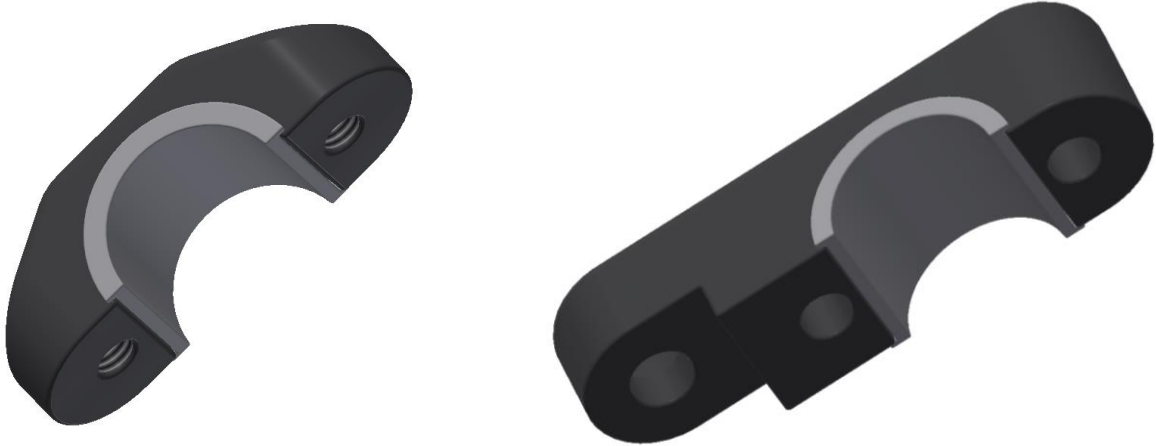
- Engage the exposed thread into the thread in the peg (RP0008) as shown above left (do not tighten at this stage).
- Place two of the M6 cap head bolts into the mounting block (M0460) so the heads of the bolts fit into the counter-bores in the mounting block as shown above right.
- Offer this assembly into position as shown in the top right picture ensuring the peg is in a comfortable and usable position.
- Place one of the clamps (F0044) into position and tighten the two M6 bolts as shown below left.



- Place the slider (PS0005) into the peg and lock into position using the set screw as shown above right.
- If fitting onto 22mm bars we have included spacers/shims (S0933) to make this possible as shown below.



HWP0002



- The assembly may be removed or rotated when not in use.

ISSUE 1 23/08/2016 (NSY)

Digital copies of these instructions are available to download from www.rg-racing.com

GENERAL TORQUE SETTINGS

- M4 BOLT = 8Nm
- M5 BOLT = 12Nm
- M6 BOLT = 15Nm
- M8 BOLT = 20Nm
- M10 BOLT = 40Nm

CONSUMER NOTICE

The catalogue description and any exhibition of samples are only broad indications of the Products and R&G may make design changes which do not diminish their performance or visual appeal and supplying them in such state shall conform to the order. The Buyer acknowledges no representation or warranty (other than as to title) has been given or will apply to the Products other than those in R&G's order or confirmation and the Buyer confirms it has chosen the Products as being of merchantable quality and suitable for its particular purposes. Where R&G fits the Products or undertakes other services it shall exercise reasonable skill and care and rectify any fault free of charge unless the workmanship has been disturbed. The Buyer is responsible for ensuring that the warranty on the motorcycle is not affected by the fitting of the Products. On return of any defective Products R&G shall at its option either supply a replacement or refund the purchase money but shall not be liable if the Products have been modified or used or maintained otherwise than in accordance with R&G's or manufacturer's instructions and good engineering practice or if the defect arises from accident or neglect. Other than identified above and subject to R&G not limiting its liability for causing death and personal injury, it shall not be liable for indirect or consequential loss and otherwise its liability shall be limited to the amounts paid by the Buyer for the Products or the fitting or service concerned. These terms do not affect the Buyer's statutory rights.

R&G RACING RETURNS POLICY (NON-FAULTY GOODS)

Returns must be pre-authorised (if not pre-authorised the return will be rejected). Goods may only be returned direct to us if they were purchased direct from us (customer must prove if necessary). Otherwise to be returned to original vendor. Goods must be in re-sellable condition, in the opinion of R&G Racing. All returns are subject to a 25% restocking and handling fee (25% of the gross value exc. P&P – at the prevailing price at time of purchase). The customer must pay any and all carriage charges. No returns of discontinued products, unless within 14 days of purchase. This policy does not affect your statutory rights and does not refer to faulty goods.

R&G Racing

Unit 1, Shelley's Lane, East Worldham, Alton, Hampshire, GU34 3AQ

Tel: +44 (0)1420 89007 Fax: +44 (0)1420 87301 www.rg-racing.com Email: info@rg-racing.com



HWP0002

NOTICE DE MONTAGE POUR HWP0002
PEGS ROUTIERS UNIVERSELS POUR AXE DE 22mm et 25mm

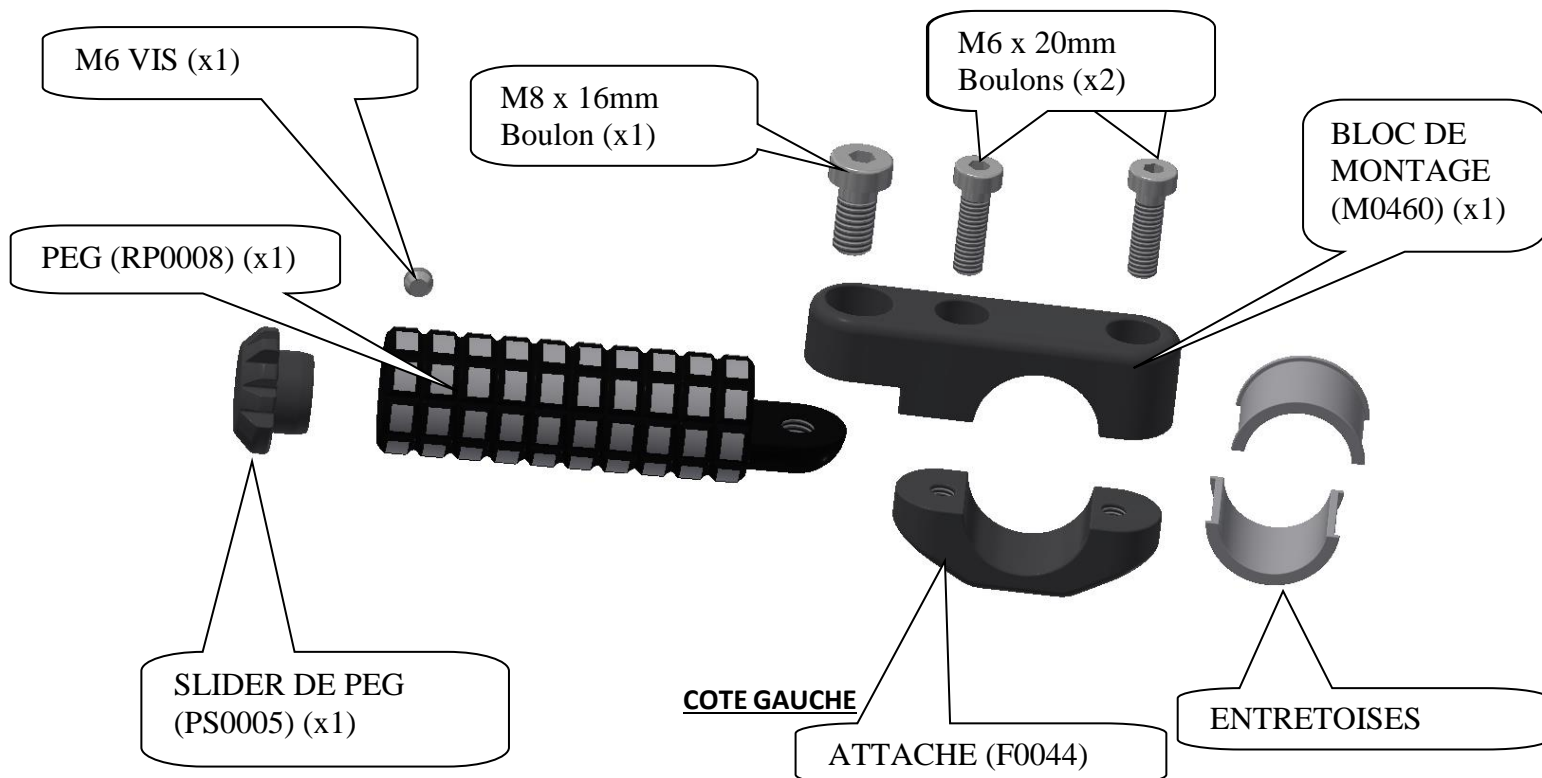
Page | 6



Le kit contient les articles exposés ci-dessous, vérifier que toutes les pièces soient présentes avant de procéder au montage.

La façon dont le kit est emballé ne correspond pas forcément à la façon de monter les pièces sur la moto.

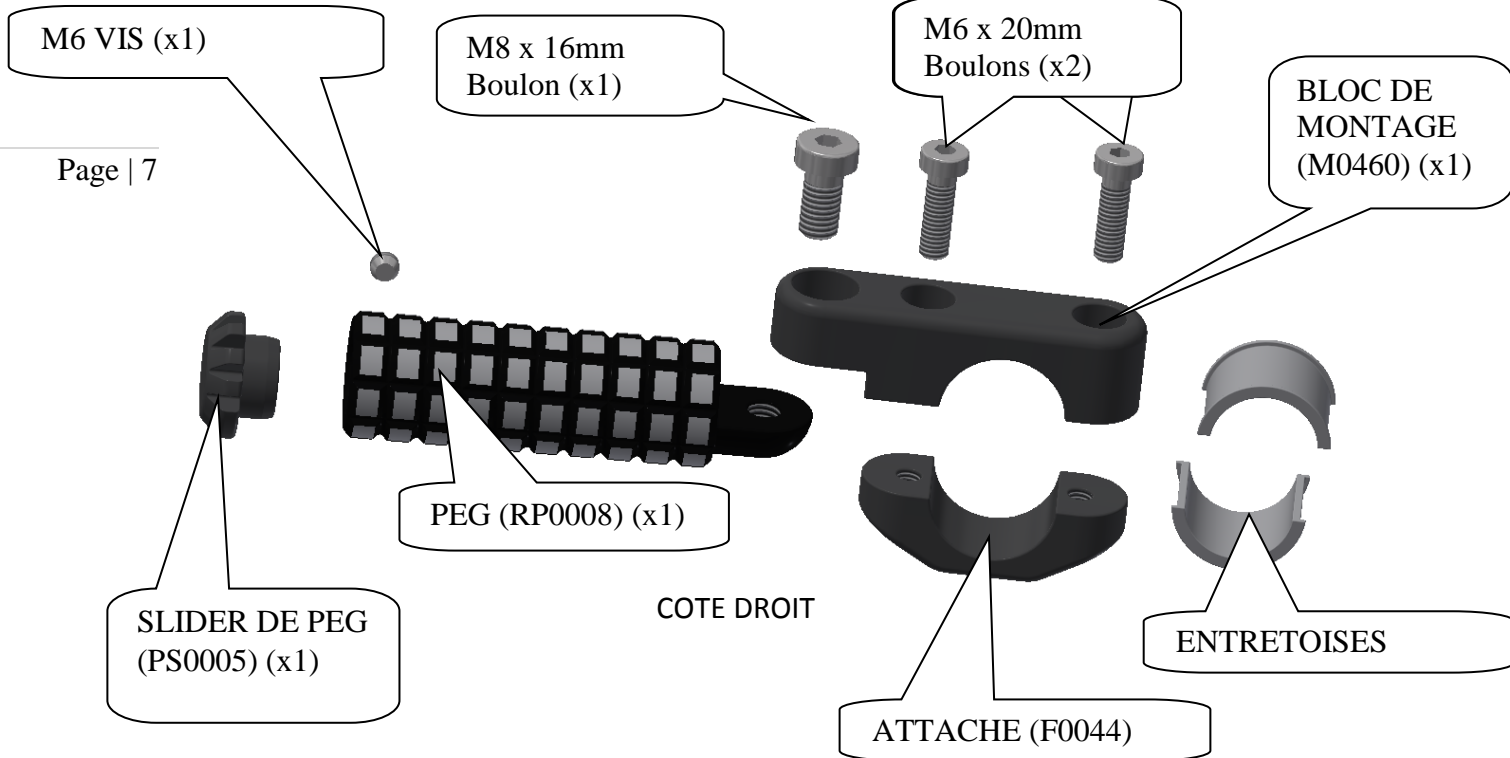
LES PARTIES PRESENTES PEUVENT ETRE UNIQUEMENT REPRESENTATIVES (POUR LA CLARTE DES INSTRUCTIONS UNIQUEMENT)



R&G Racing
 Unit 1, Shelley's Lane, East Worldham, Alton, Hampshire, GU34 3AQ
 Tel: +44 (0)1420 89007 Fax: +44 (0)1420 87301 www.rg-racing.com Email: info@rg-racing.com



HWP0002



Notez que si les kits sont emballés avec des rondelles en caoutchouc servant à tenir les composants, *ces rondelles doivent être jetées!*

OUTILS REQUIS

- Clé Allen 3, 5 et 6mm.

NOTICE DE MONTAGE

COTE GAUCHE

- Placer un des boulons M8 dans un des blocs de montage (M0460) de façon à ce que la tête du boulon se place dans l'alésage comme indiqué ci-dessous à gauche.



R&G Racing

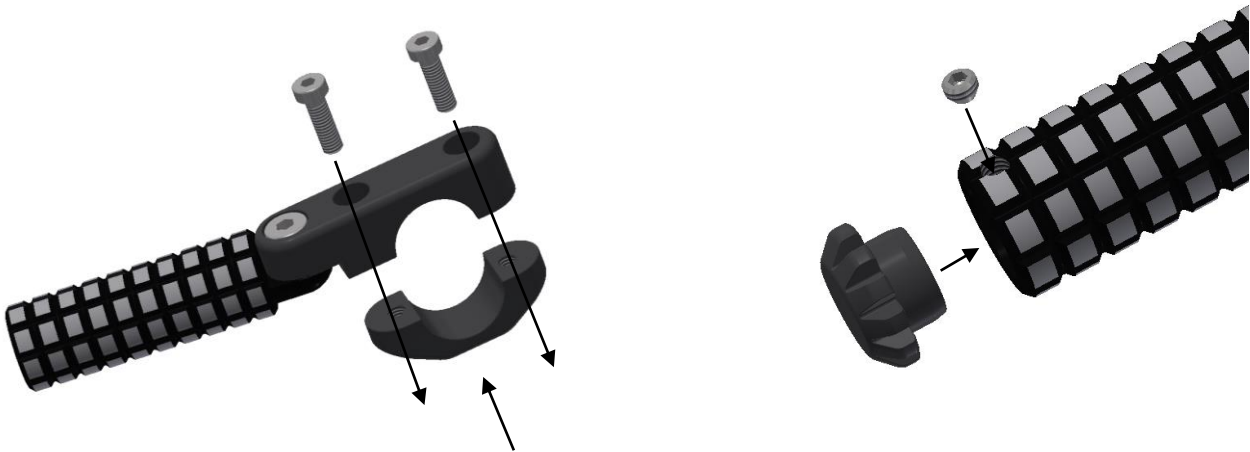
Unit 1, Shelley's Lane, East Worldham, Alton, Hampshire, GU34 3AQ
 Tel: +44 (0)1420 89007 Fax: +44 (0)1420 87301 www.rg-racing.com Email: info@rg-racing.com



HWP0002

Page | 8

- Engager l'extrémité du filetage dans le filetage du peg (RP0008) comme indiqué ci-dessus à gauche (ne pas serrer complètement).
- Placer 2 boulons M6 dans le bloc de montage (M0460) de façon à ce que les têtes des boulons se placent dans les alésages du bloc de montage, comme ci-dessus à droite.
- Monter l'ensemble en position comme indiqué sur la photo ci-dessus à gauche en veillant à ce que le peg soit monté dans une position confortable et opérationnelle.
- Placer une des attaches (F0044) en position puis serrer les 2 boulons M6 comme indiqué ci-dessus à gauche.



- Placer le slider (PS0005) dans le peg puis bloquer la position à l'aide des vis comme indiqué ci-dessus à droite.
- Si le montage s'effectue sur des axes 22mm, nous avons inclus des entretoises/cales (S0933) pour rendre le montage possible comme indiqué ci-dessous.



- L'assemblage peut être enlevé ou tournée lorsqu'il n'est pas utilisé.

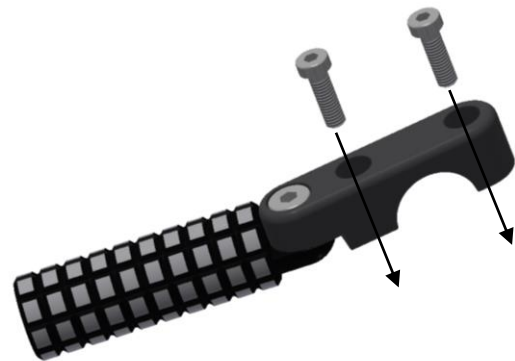


HWP0002

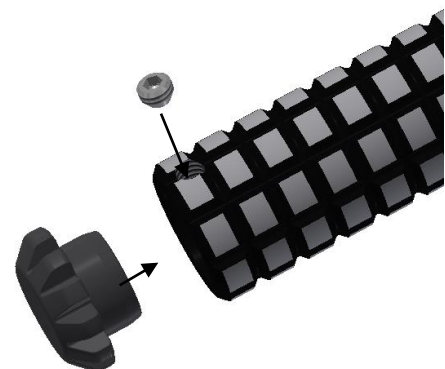
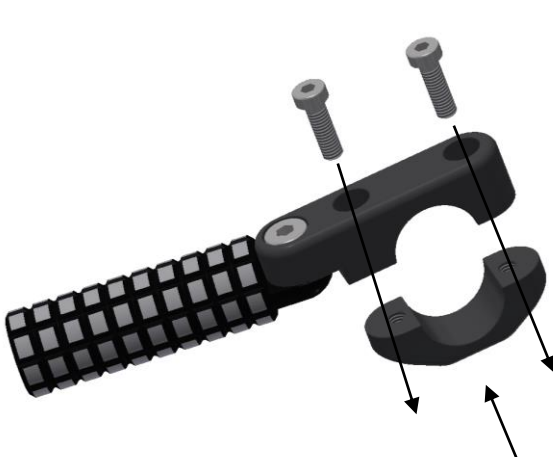
Page | 9

COTE DROIT

- Placer un boulon M8 dans un des blocks de montage (M0460) de façon à ce que la tête du boulon se place dans l'alésage comme ci-dessous à gauche.



- Engager l'extrémité du filetage dans le filetage du peg (RP0008) comme ci-dessus à gauche (ne pas serrer à ce stade).
- Placer 2 boulons M6 dans le bloc de montage (M0460) de façon à ce que les têtes des boulons se placent dans les alésages du bloc de montage, comme ci-dessus à droite.
- Monter l'ensemble en position comme ci-dessus à droite en veillant à ce que le peg soit dans une position confortable et opérationnelle.
- Placer une des attaches (F0044) en position puis serrer les 2 boulons M6, comme ci-dessous à gauche.



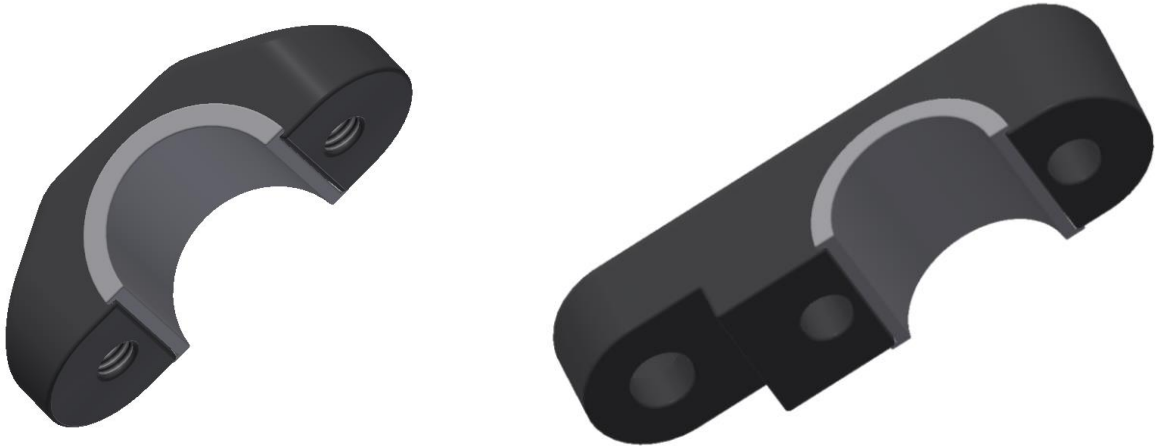
- Placer the slider (PS0005) dans le peg puis bloquer la position à l'aide des vis comme ci-dessus à droite.



HWP0002

- Si le montage s'effectue sur des axes de 22mm nous avons inclus des entretoises/cales (S0933) pour que le montage soit possible, voir ci-dessous.

Page | 10



- L'assemblage peut être enlevé ou tournée lorsqu'il n'est pas utilisé.

ISSUE 1 23/08/2016 (NSY)

Notice disponible au téléchargement sur www.rg-racing.com

COUPLES DE SERRAGE RECOMMANDES

M4 BOULON = 8Nm
M5 BOULON = 12Nm
M6 BOULON = 15Nm
M8 BOULON = 20Nm
M10 BOULON = 40Nm

CONSUMER NOTICE

The catalogue description and any exhibition of samples are only broad indications of the Products and R&G may make design changes which do not diminish their performance or visual appeal and supplying them in such state shall conform to the order. The Buyer acknowledges no representation or warranty (other than as to title) has been given or will apply to the Products other than those in R&G's order or confirmation and the Buyer confirms it has chosen the Products as being of merchantable quality and suitable for its particular purposes. Where R&G fits the Products or undertakes other services it shall exercise reasonable skill and care and rectify any fault free of charge unless the workmanship has been disturbed. The Buyer is responsible for ensuring that the warranty on the motorcycle is not affected by the fitting of the Products. On return of any defective Products R&G shall at its option either supply a replacement or refund the purchase money but shall not be liable if the Products have been modified or used or maintained otherwise than in accordance with R&G's or manufacturer's instructions and good engineering practice or if the defect arises from accident or neglect. Other than identified above and subject to R&G not limiting its liability for causing death and personal injury, it shall not be liable for indirect or consequential loss and otherwise its liability shall be limited to the amounts paid by the Buyer for the Products or the fitting or service concerned. These terms do not affect the Buyer's statutory rights.

R&G RACING RETURNS POLICY (NON-FAULTY GOODS)

Returns must be pre-authorized (if not pre-authorized the return will be rejected). Goods may only be returned direct to us if they were purchased direct from us (customer must prove if necessary). Otherwise to be returned to original vendor. Goods must be in re-sellable condition, in the opinion of R&G Racing. All returns are subject to a 25% restocking and handling fee (25% of the gross value exc. P&P – at the prevailing price at time of purchase). The customer must pay any and all carriage charges. No returns of discontinued products, unless within 14 days of purchase. This policy does not affect your statutory rights and does not refer to faulty goods.

R&G Racing

Unit 1, Shelley's Lane, East Worldham, Alton, Hampshire, GU34 3AQ

Tel: +44 (0)1420 89007 Fax: +44 (0)1420 87301 www.rg-racing.com Email: info@rg-racing.com