



FITTING INSTRUCTIONS FOR LP0099BK LICENCE PLATE BRACKET
TRIUMPH SPEED TRIPLE 2011-
(FOR USE WITH STANDARD AND R&G MINI INDICATORS (8mm))



THIS KIT CONTAINS THE ITEMS PICTURED AND LABELLED OVER PAGE.

SOME PARTS MAY BE SHOWN FOR CLARITY OF INSTRUCTIONS ONLY.

DO NOT PROCEED UNTIL YOU ARE SURE ALL PARTS ARE PRESENT.

PLEASE READ ALL INSTRUCTIONS BEFORE PROCEEDING.

**IF IN ANY DOUBT WHEN FITTING OUR PRODUCTS, CONSULT ONE OF OUR DEALERS OR
HAVE FITTED BY A QUALIFIED TECHNICIAN.**

PLEASE NOTE THAT THE WAY THE KIT IS PACKED DOES NOT NECESSARILY REPRESENT THE WAY OF
MOUNTING TO THE BIKE.

IN THE EVENT OF RUBBER WASHERS BEING USED TO HOLD COMPONENTS ONTO BOLTS,
THESE RUBBER WASHERS CAN BE THROWN AWAY.

DIGITAL COPIES OF THESE INSTRUCTIONS ARE AVAILABLE FROM:

WWW.RG-RACING.COM



TOOLS REQUIRED	GENERAL TORQUE SETTINGS
<ul style="list-style-type: none"> • set of metric Allen keys to include 4 & 5mm A/F sizes. • 6, 10 and 12mm spanners or socket and wrench. <ul style="list-style-type: none"> • Phillips type driver. • Cable cutters. • Small amount of adhesive. 	<p>M4 BOLT = 8Nm</p> <p>M5 BOLT = 12Nm</p> <p>M6 BOLT = 15Nm</p> <p>M8 BOLT = 20Nm</p> <p>M10 BOLT = 40Nm</p> <p>M12 BOLT = 40Nm</p>

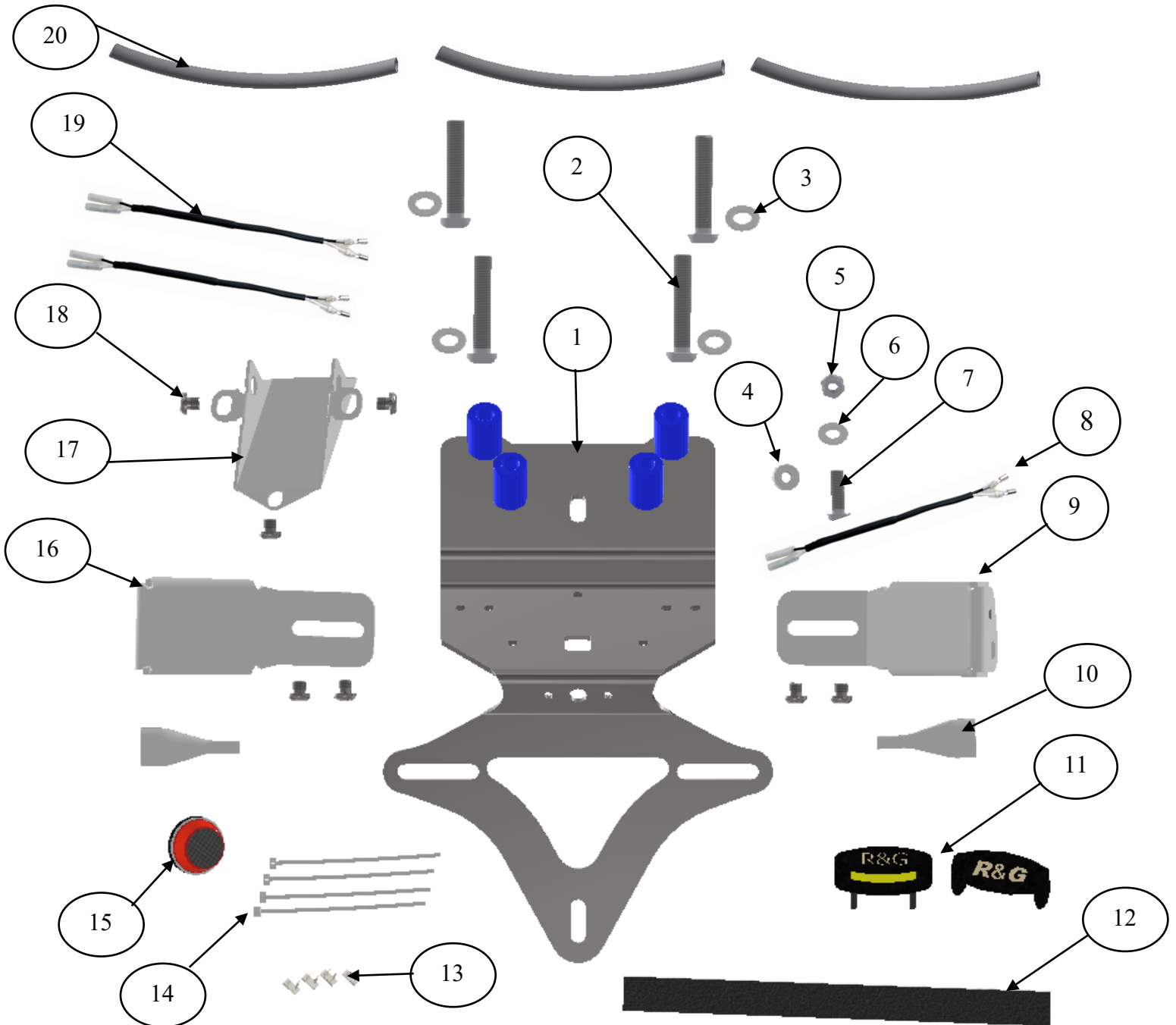
LEGEND

ITEM NO.	DESCRIPTION	QTY
ITEM 1	LICENCE PLATE BRACKET (TB0099 PART 1 WITH SPACERS)	1
ITEM 2	M8 x 45mm LONG BUTTON HEAD BOLTS	4
ITEM 3	M8 WASHERS	4
ITEM 4	PANEL SPACER (S1219-8mm WIDE)	1
ITEM 5	M6 NYLOC NUT	1
ITEM 6	M6 WASHERS	1
ITEM 7	M6 x 20mm LONG BUTTON HEAD BOLT	1
ITEM 8	LICENCE PLATE ILLUMINATOR CONNECTOR (CON0065)	1
ITEM 9	RIGHT HAND INDICATOR BRACKET (TB0099 PART 4)	1
ITEM 10	INDICATOR WIRING COVERS (IWC0002)	2
ITEM 11	LA0002 LICENCE PLATE ILLUMINATOR WITH SHROUD	1
ITEM 12	150mm LENGTH OF SELF ADHESIVE FOAM	2
ITEM 13	SELF-ADHESIVE CABLE CLIPS	4
ITEM 14	2.5mm CABLE TIES	4
ITEM 15	REFLECTOR (REFL3)	1
ITEM 16	LEFT HAND INDICATOR BRACKET (TB0099 PART 3)	1
ITEM 17	CABLE COVER/INDICATOR BRACKET (TB0099 PART 2)	1
ITEM 18	M6 x 6mm LONG BUTTON HEAD BOLTS	7
ITEM 19	MINI INDICATOR CONNECTORS (CON0046)	2
ITEM 20	150mm LENGTH OF HEATSHRINK	3

R&G

Unit 1, Shelley's Lane, East Worldham, Alton, Hampshire, GU34 3AQ

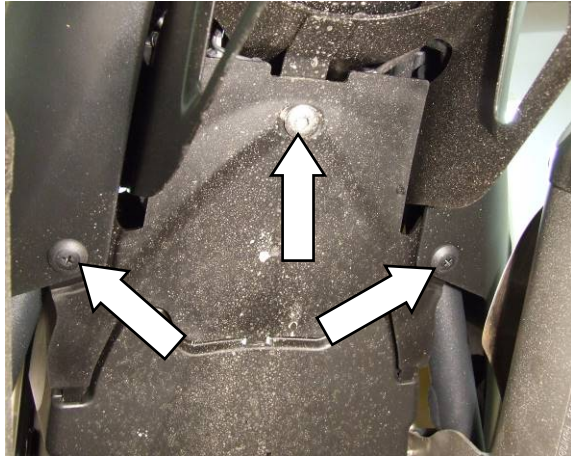
Tel: +44 (0)1420 89007 Fax: +44 (0)1420 87301 www.rg-racing.com Email: info@rg-racing.com



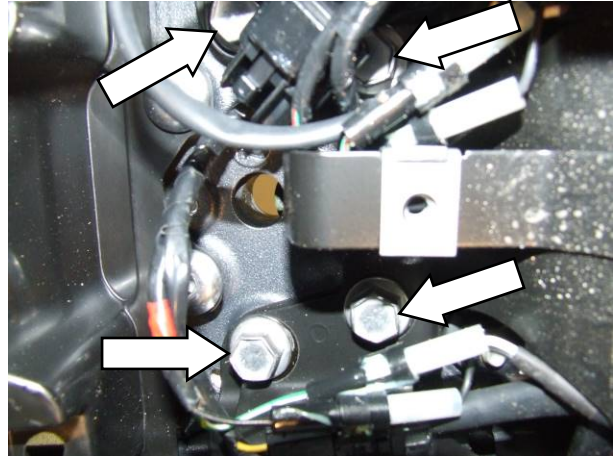
R&G

Unit 1, Shelley's Lane, East Worldham, Alton, Hampshire, GU34 3AQ

Tel: +44 (0)1420 89007 Fax: +44 (0)1420 87301 www.rg-racing.com Email: info@rg-racing.com



PICTURE 1



PICTURE 2

FITTING INSTRUCTIONS

- REMOVE SEAT USING KEY.
- REMOVE THE CABLE/COVER (**SHOWN IN PICTURE 1**) BY REMOVING ONE BOLT AND TWO PLASTIC SCREW RIVETS SHOWN IN **PICTURE 1**.
- REMOVE THE FOUR BOLTS ARROWED IN **PICTURE 2** USING 12mm SOCKET AND GENTLY LOWER ORIGINAL LICENCE PLATE BRACKET.
- DISCONNECT WIRING CONNECTORS FOR BOTH INDICATORS, REAR LIGHT AND LICENCE PLATE LIGHT SHOWN IN **PICTURE 3**.
- MOUNT THE LICENCE PLATE LIGHT (**ITEM 11**) AS SHOWN IN **PICTURE 5**. PLEASE USE AS SHOWN IN **PICTURE 7** THE SUPPLIED CONNECTOR (**ITEM 8**). PLEASE NOTE WIRING SCHEME BELOW.

	ORIGINAL WIRE-----	NEW WIRE
LICENCE PLATE LIGHT	BLACK-----	BLACK
	YELLOW-----	RED

- FIT LICENCE PLATE LIGHT SHROUD (**LH0004**) USING A SMALL AMOUNT OF SUPER-GLUE TO SECURE.
- **IF USING MINI INDICATORS (R&G PRODUCT CODE RG370, RG371 OR RG0372).**
- FIT THE INDICATORS TO THE CABLE COVER/INDICATOR BRACKET (**ITEM 17**) AS SHOWN IN **PICTURE 6**.
- IF USING MINI INDICATORS USE THE SUPPLIED CONNECTORS (**ITEM 19**) AS SHOWN IN **PICTURE 7**. PLEASE NOTE WIRING SCHEME.

	ORIGINAL WIRE-----	NEW WIRE
RIGHT HAND INDICATOR	BLACK-----	BLACK
	WHITE/GREEN-----	BLACK/WHITE
LEFT HAND INDICATOR	BLACK-----	BLACK
	GREEN/RED-----	BLACK/WHITE

- FIT THE SELF ADHESIVE FOAM (**ITEM 12**) AS SHOWN IN **PICTURE 8**.
- IF USING MINI'S MOUNTED ONTO CABLE COVER (AS TOP PICTURE) MOUNT THE ASSEMBLY (AS SHOWN IN **PICTURE 6**) TO LICENCE PLATE BRACKET (**ITEM 1**) USING THREE OF THE M6x6mm LONG BUTTON HEAD BOLTS (**ITEM 18**).

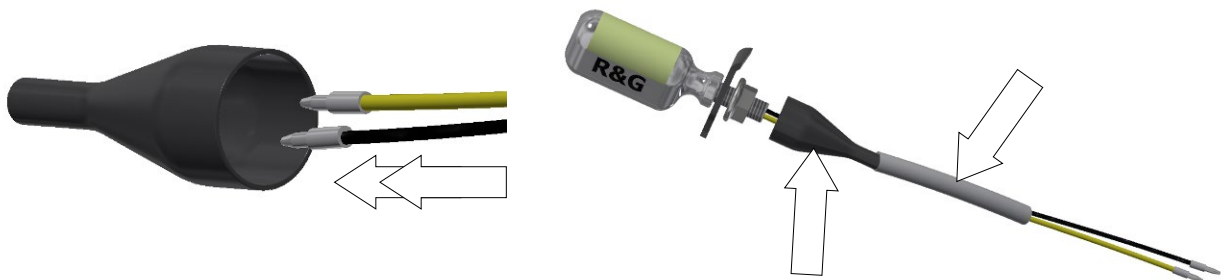
R&G

Unit 1, Shelley's Lane, East Worldham, Alton, Hampshire, GU34 3AQ

Tel: +44 (0)1420 89007 Fax: +44 (0)1420 87301 www.rg-racing.com Email: info@rg-racing.com



- **IF USING ORIGINAL INDICATORS.**
- FIT LEFT HAND INDICATOR TO LEFT HAND INDICATOR BRACKET (**ITEM 16**) (AS SHOWN IN **PICTURE 12**) USING ORIGINAL BOLT AND FEED WIRES THROUGH HOLE IN CABLE COVER.
- FIT RIGHT HAND INDICATOR TO RIGHT HAND INDICATOR BRACKET (**ITEM 9**) (AS SHOWN IN **PICTURE 12**) USING ORIGINAL BOLT AND FEED WIRES THROUGH HOLE IN CABLE COVER.



- Feed the indicator wiring through the nut/wire cover (**item 10**) as shown above (it helps if a small amount of liquid detergent is used) and position the nut cover over the nut.
- Fit one length of heat-shrink (**item 20**) to each of the wires of the indicators so it goes over the tail of the nut/wire covers (as shown above) and carefully warm to shrink heat-shrink to fit.
- Repeat the above for the opposite indicator.
- MOUNT BOTH THE INDICATOR BRACKETS TO LICENCE PLATE BRACKET (**ITEM 1**) USING FOUR OF THE M6x6mm LONG BUTTON HEAD BOLTS (**ITEM 18**) DO NOT TIGHTEN AT THIS STAGE.
- MOUNT THE ENTIRE ASSEMBLY TO MOTORCYCLE AS ORIGINAL USING THE FOUR M8 BOLTS AND WASHERS (**ITEMS 2 AND 3**) AS SHOWN IN **PICTURE 9** AND TIGHTEN.
- CONNECT ALL WIRING PLUGS AND CONNECTORS INCLUDING REAR/BRAKE LIGHT CONNECTOR.
- AT THIS STAGE IT IS ADVISABLE TO CHECK OPERATION OF ALL LIGHTS.
- TIDY THE WIRES USING CABLE TIES AND CLIPS (**ITEMS 13 AND 14**) AND TUCK INTO THE SPACE WHERE WIRES WERE ORIGINALLY.
- PLACE THE M6 x 20mm LONG BUTTON HEAD BOLT WITH WASHER (**ITEMS 7 AND 6**) THROUGH THE ORIGINAL PANEL SPACER AND THEN FIT THE THREADED SPACER (**ITEM 4**) ONTO THE EXPOSED THREAD AS SHOWN IN **PICTURE 4** AND OFFER INTO POSITION AS ORIGINAL AND USE THE NYLOC NUT TO SECURE IN POSITION AS SHOWN IN **PICTURE 11**.
- REFIT THE TWO PLASTIC SCREW RIVETS.
- REFIT LICENCE PLATE (IT MAY REQUIRE DRILLING).
- **IMPORTANT: IF FITTING A FULL-SIZE LICENCE PLATE AND PLACING IT FAR DOWN ON THE LICENCE PLATE HANGER, THERE IS A SMALL CHANCE OF THE LICENCE PLATE HITTING THE BACK WHEEL UNDER HEAVY LOAD AND OVER LARGE BUMPS IN THE ROAD. IT IS YOUR RESPONSIBILITY TO CHECK FOR THIS POSSIBILITY AND TAKE AVOIDING ACTION. FAILURE TO CHECK THIS COULD RESULT IN SERIOUS INJURY.**
- REFIT SEAT.
- DEPENDING ON LOCAL LAWS, ATTACH ENCLOSED RED REFLECTOR (**ITEM 15**) IN AN APPROPRIATE LOCATION.
- TEST THE INDICATORS (TURN SIGNALS), LICENCE PLATE ILLUMINATOR AND ALL LIGHTS BEFORE RIDING.

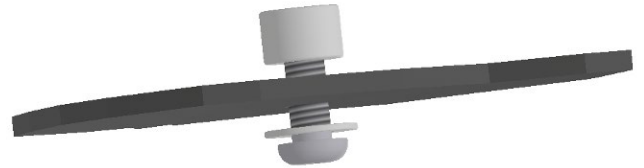
R&G

Unit 1, Shelley's Lane, East Worldham, Alton, Hampshire, GU34 3AQ

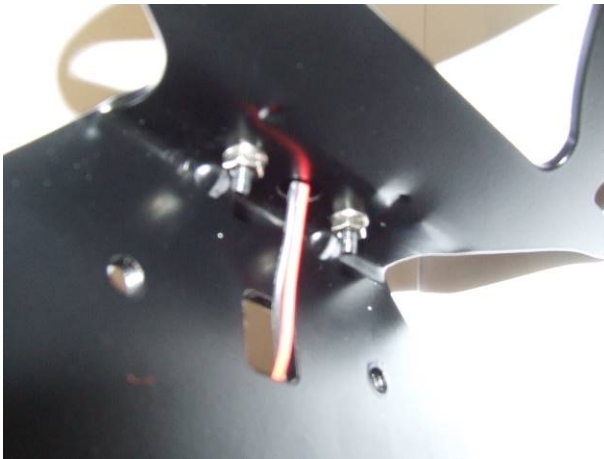
Tel: +44 (0)1420 89007 Fax: +44 (0)1420 87301 www.rg-racing.com Email: info@rg-racing.com



PICTURE 3



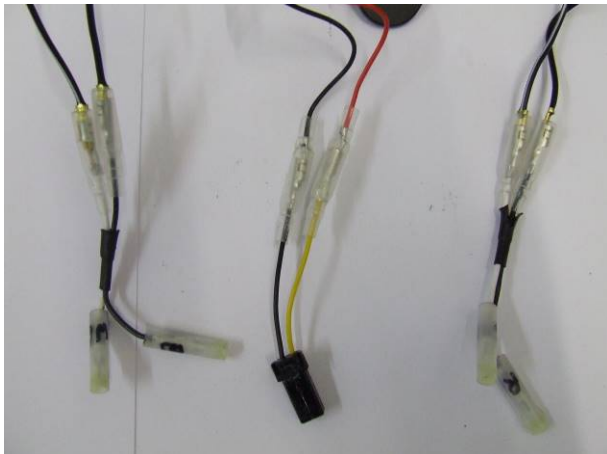
PICTURE 4



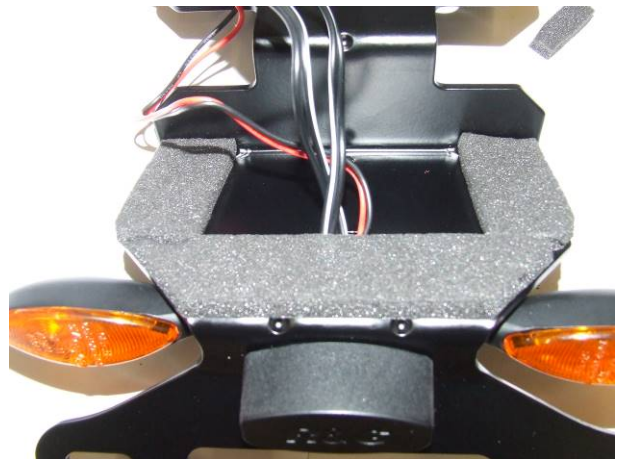
PICTURE 5



PICTURE 6



PICTURE 7

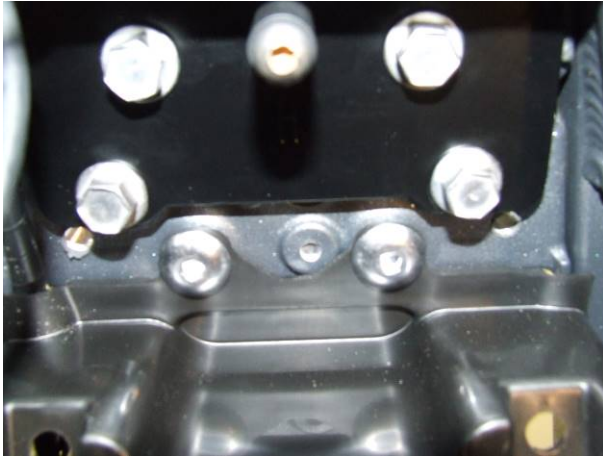


PICTURE 8

R&G

Unit 1, Shelley's Lane, East Worldham, Alton, Hampshire, GU34 3AQ

Tel: +44 (0)1420 89007 Fax: +44 (0)1420 87301 www.rg-racing.com Email: info@rg-racing.com



PICTURE 9



PICTURE 10



PICTURE 11



PICTURE 12



ISSUE 3 11/06/21 (AO)

CONSUMER NOTICE

The catalogue description and any exhibition of samples are only broad indications of the Products and R&G may make design changes which do not diminish their performance or visual appeal and supplying them in such state shall conform to the order. The Buyer acknowledges no representation or warranty (other than as to title) has been given or will apply to the Products other than those in R&G's order or confirmation and the Buyer confirms it has chosen the Products as being of merchantable quality and suitable for its particular purposes. Where R&G fits the Products or undertakes other services it shall exercise reasonable skill and care and rectify any fault free of charge unless the workmanship has been disturbed. The Buyer is responsible for ensuring that the warranty on the motorcycle is not affected by the fitting of the Products. On return of any defective Products R&G shall at its option either supply a replacement or refund the purchase money but shall not be liable if the Products have been modified or used or maintained otherwise than in accordance with R&G's or manufacturer's instructions and good engineering practice or if the defect arises from accident or neglect. Other than identified above and subject to R&G not limiting its liability for causing death and personal injury, it shall not be liable for indirect or consequential loss and otherwise its liability shall be limited to the amounts paid by the Buyer for the Products or the fitting or service concerned. These terms do not affect the Buyer's statutory rights.

R&G RETURNS POLICY (NON-FAULTY GOODS)

Returns must be pre-authorized (if not pre-authorized the return will be rejected). Goods may only be returned direct to us if they were purchased direct from us (customer must prove if necessary). Otherwise to be returned to original vendor. Goods must be in re-sellable condition, in the opinion of R&G. All returns are subject to a 25% restocking and handling fee (25% of the gross value exc. P&P - at the prevailing price at time of purchase). The customer must pay any and all carriage charges. No returns of discontinued products, unless within 14 days of purchase. This policy does not affect your statutory rights and does not refer to faulty goods.

R&G

Unit 1, Shelley's Lane, East Worldham, Alton, Hampshire, GU34 3AQ

Tel: +44 (0)1420 89007 Fax: +44 (0)1420 87301 www.rg-racing.com Email: info@rg-racing.com



NOTICE DE MONTAGE POUR LP0099BK SUPPORT DE PLAQUE
TRIUMPH SPEED TRIPLE 2011-
(POUR CLIGNOTANTS STANDARDS ET MINI CLIGNOTANTS R&G (8mm))



CE KIT CONTIENT LES ARTICLES ILLUSTRÉS ET ÉTIQUETES SUR LA PAGE.

CERTAINES PARTIES PEUVENT ÊTRE PRÉSENTES UNIQUEMENT POUR LA CLARTÉ DES INSTRUCTIONS.

NE PAS PROCÉDER AU MONTAGE TANT QUE VOUS N'ÊTES PAS SÛR QUE TOUTES LES PIÈCES SOIENT PRÉSENTES.

VEUILLEZ LIRE TOUTES LES INSTRUCTIONS AVANT DE CONTINUER.

**EN CAS DE DOUTE LORS DU MONTAGE DE NOS PRODUITS, CONSULTEZ UN DE NOS
REVENDEURS OU FAITES APPEL À UN TECHNICIEN QUALIFIÉ.**

VEUILLEZ NOTER QUE LA FAÇON DONT LE KIT EST EMBALLÉ NE REPRÉSENTE PAS NECESSAIREMENT LA
MANIÈRE DE LE MONTER SUR LA MOTO.

SI DES RONDELLES EN CAOUTCHOUC SONT UTILISÉES POUR MAINTENIR LES COMPOSANTS SUR LES
BOULONS, ELLES PEUVENT ÊTRE JETÉES.

NOTICE DISPONIBLE AU TÉLÉCHARGEMENT SUR :

WWW.RG-RACING.COM

R&G

Unit 1, Shelley's Lane, East Worldham, Alton, Hampshire, GU34 3AQ

Tel: +44 (0)1420 89007 Fax: +44 (0)1420 87301 www.rg-racing.com Email: info@rg-racing.com

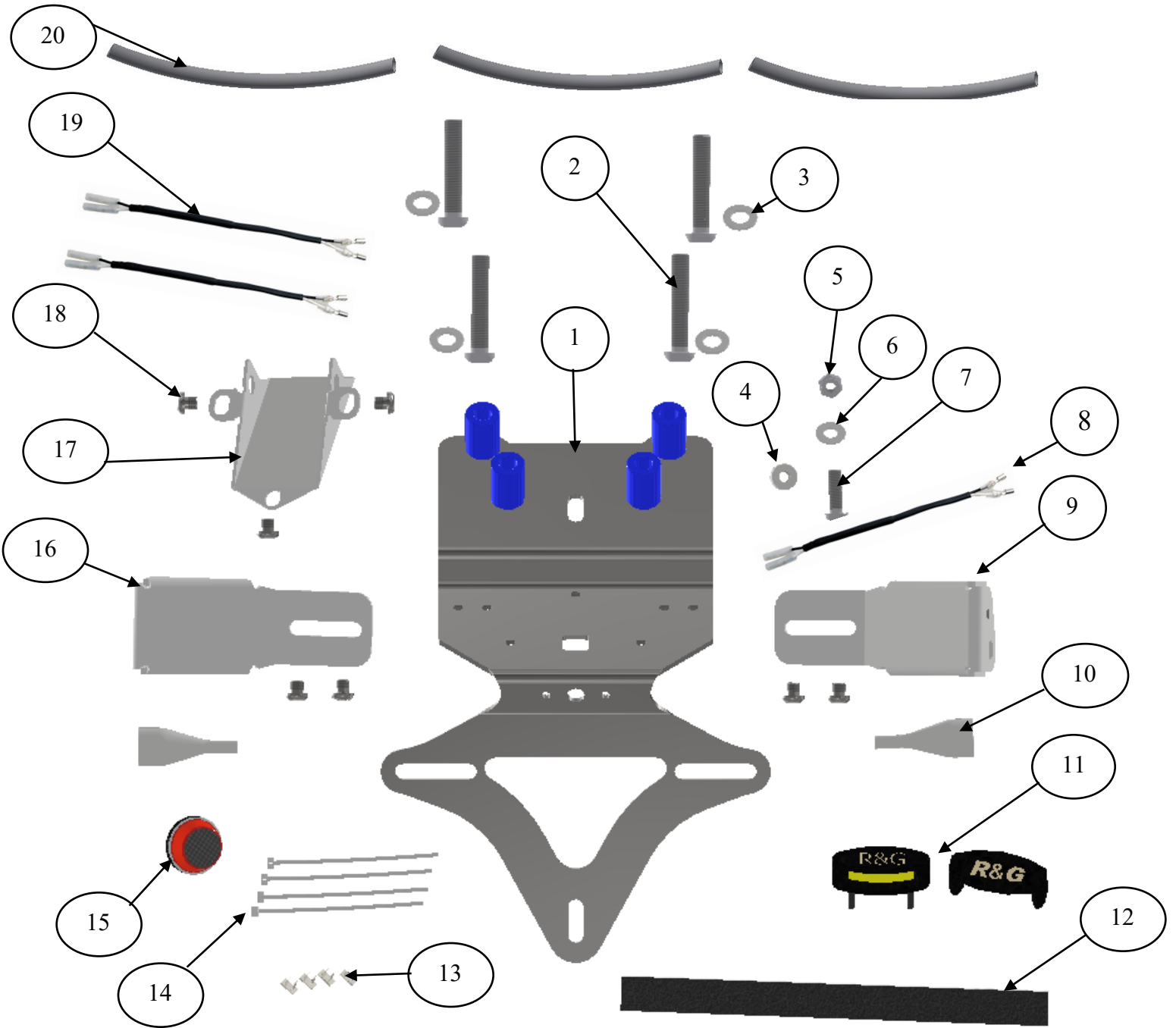


OUTILS REQUIS	VALEURS DE SERRAGE
<ul style="list-style-type: none"> • Clés Allen 4 & 5mm. • Clé à cliquet + douilles 6, 10 et 12mm. <ul style="list-style-type: none"> • Tournevis cruciforme. • Pince coupante. • Un peu d'adhésif. 	M4 BOULON = 8Nm M5 BOULON = 12Nm M6 BOULON = 15Nm M8 BOULON = 20Nm M10 BOULON = 40Nm M12 BOULON = 40Nm

LÉGENDE

ARTICLE NO.	DESCRIPTION	QTÉ
ARTICLE 1	SUPPORT PLAQUE (TB0099 PARTIE 1 AVEC ENTRETOISES)	1
ARTICLE 2	M8 x 45mm BOULONS	4
ARTICLE 3	M8 RONDELLES	4
ARTICLE 4	ENTRETOISE (S1219-8mm DE LARGE)	1
ARTICLE 5	M6 ÉCROU	1
ARTICLE 6	M6 RONDELLES	1
ARTICLE 7	M6 x 20mm BOULON	1
ARTICLE 8	CONNECTEUR DE FEU DE PLAQUE (CON0065)	1
ARTICLE 9	SUPPORT CLIGNOTANT CÔTÉ DROIT (TB0099 PART 4)	1
ARTICLE 10	CACHE FIL CLIGNOTANT (IWC0002)	2
ARTICLE 11	LA0002 FEU DE PLAQUE AVEC LINCEUL	1
ARTICLE 12	150mm LONGUEUR DE MOUSSE AUTOCOLLANTE	2
ARTICLE 13	CLIPS CÂBLE AUTOCOLLANT	4
ARTICLE 14	2.5mm COLLIERS DE SERRAGE	4
ARTICLE 15	REFLECTEUR (REFL3)	1
ARTICLE 16	SUPPORT CLIGNOTANT CÔTÉ GAUCHE (TB0099 PARTIE 3)	1
ARTICLE 17	SUPPORT CLIGNOTANT / CACHE CÂBLE (TB0099 PARTIE 2)	1
ARTICLE 18	M6 x 6mm BOULONS	7
ARTICLE 19	CONNECTEURS DE MINI CLIGNOTANTS (CON0046)	2
ARTICLE 20	150mm LONGUEUR DE MANCHON THERMO RÉTRACTABLE	3

R&G



R&G

Unit 1, Shelley's Lane, East Worldham, Alton, Hampshire, GU34 3AQ

Tel: +44 (0)1420 89007 Fax: +44 (0)1420 87301 www.rg-racing.com Email: info@rg-racing.com

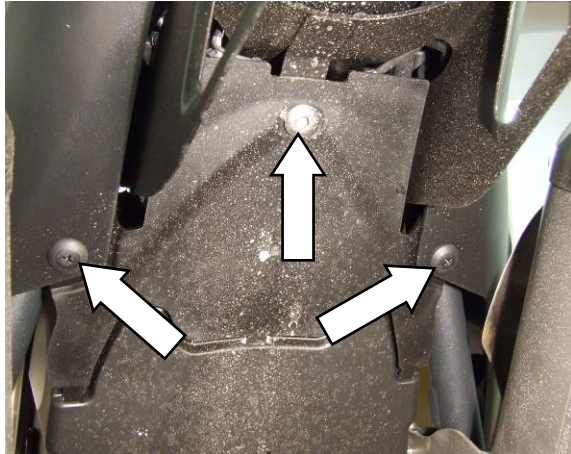


PHOTO 1

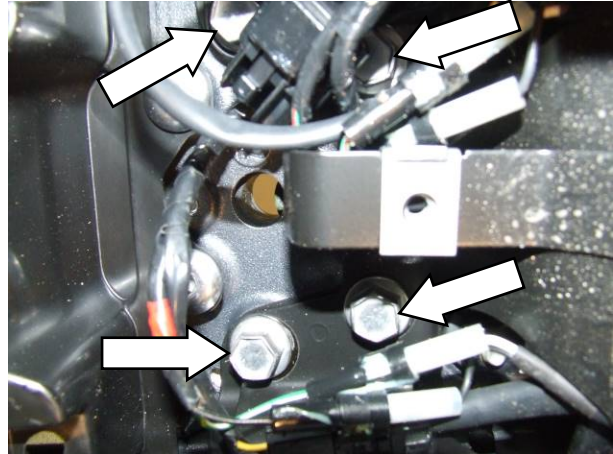


PHOTO 2

NOTICE DE MONTAGE

- RETIREZ LE SIÈGE À L'AIDE DE LA CLÉ.
- RETIREZ LE CÂBLE/COUVERCLE (MONTÉ SUR LA PHOTO 1) EN ENLEVANT UN BOULON ET DEUX RIVETS DE VIS EN PLASTIQUE MONTRÉS SUR LA PHOTO 1.
- RETIREZ LES QUATRE BOULONS FLÈCHES SUR LA PHOTO 2 À L'AIDE D'UNE DOUILLE DE 12 MM PUIS ABAISSE LE SUPPORT DE PLAQUE.
- DÉBRANCHEZ LES CONNECTEURS DE CÂBLAGE POUR LES DEUX CLIGNOTANTS, LE FEU ARRIÈRE ET L'ÉCLAIRAGE DE LA PLAQUE D'IMMATRICULATION ILLUSTRÉS SUR LA PHOTO 3.
- MONTEZ LE FEU DE PLAQUE D'IMMATRICULATION (ARTICLE 11) COMME INDIQUÉ SUR LA PHOTO 5. VEUILLEZ UTILISER COMME INDIQUÉ SUR LA PHOTO 7 LE CONNECTEUR FOURNI (ARTICLE 8). VEUILLEZ NOTER LE SCHÉMA DE CÂBLAGE CI-DESSOUS.

	FIL D'ORIGINE----- NOUVEAU FIL
FEU DE PLAQUE	NOIR-----NOIR
	JAUNE-----ROUGE

- AJUSTEZ LE LINCEUL DE FEU DE PLAQUE (LH0004) À L'AIDE D'UNE PETITE QUANTITÉ DE SUPERGLUE POUR FIXER.
 - SI VOUS UTILISEZ DES MINI CLIGNOTANTS (CODE PRODUIT R&G RG370, RG371 OU RG0372).
 - INSTALLER LES CLIGNOTANTS SUR LE COUVERCLE DE CÂBLE/LE SUPPORT CLIGNOTANT (ARTICLE 17) COMME INDIQUÉ SUR LA PHOTO 6.
 - SI VOUS UTILISEZ DES MINI CLIGNOTANTS, UTILISEZ LES CONNECTEURS FOURNIS (ARTICLE 19) COMME INDIQUÉ SUR LA PHOTO 7. VEUILLEZ NOTER LE SCHÉMA DE CÂBLAGE.
- | | |
|-----------------------------------|---------------------------------|
| | FIL D'ORIGINE ----- NOUVEAU FIL |
| CLIGNOTANT DROIT NOIR ----- NOIR | |
| BLANC/VERT ----- NOIR/BLANC | |
| CLIGNOTANT GAUCHE NOIR ----- NOIR | |
| VERT/ROUGE ----- NOIR/BLANC | |
- MONTEZ LA MOUSSE AUTOADHESIVE (ARTICLE 12) COMME INDIQUÉ SUR LA PHOTO 8.
 - SI VOUS UTILISEZ LES MINI CLIGNOTANTS MONTÉS SUR LE COUVERCLE DE CÂBLE (COMME SUR LA PHOTO DU HAUT), FIXEZ L'ENSEMBLE (COMME MONTRÉ SUR LA PHOTO 6) SUR LE

R&G

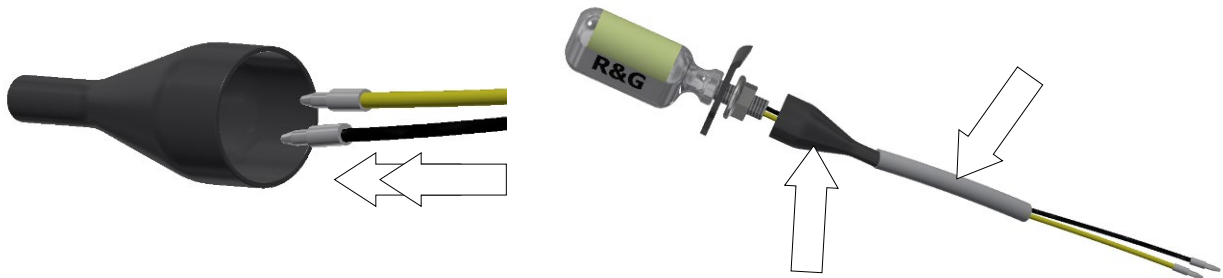
Unit 1, Shelley's Lane, East Worldham, Alton, Hampshire, GU34 3AQ

Tel: +44 (0)1420 89007 Fax: +44 (0)1420 87301 www.rg-racing.com Email: info@rg-racing.com



SUPPORT DE PLAQUE D'IMMATRICULATION (ARTICLE 1) À L'AIDE DE TROIS DES BOULONS À TÊTE M6x6mm DE LONG (ARTICLE 18).

- SI VOUS UTILISEZ LES CLIGNOTANTS D'ORIGINE.
- INSTALLER LE CLIGNOTANT GAUCHE SUR LE SUPPORT CLIGNOTANT GAUCHE (ARTICLE 16) (COMME MONTRÉ SUR LA PHOTO 12) À L'AIDE DU BOULON D'ORIGINE ET PASSER LES FILS À TRAVERS LE TROU DU COUVERCLE DE CÂBLE.
- STALLER LE CLIGNOTANT DROIT AU SUPPORT CLIGNOTANT DROIT (ARTICLE 9) (COMME INDIQUÉ SUR LA PHOTO 12) À L'AIDE DU BOULON D'ORIGINE ET PASSER LES FILS À TRAVERS LE TROU DU COUVERCLE DE CÂBLE.



- Faites passer le câblage de clignotant à travers le cache écrou/fil (article 10) comme indiqué ci-dessus (cela aide si une petite quantité de détergent liquide est utilisée) et positionnez le cache écrou sur l'écrou.
- Montez une longueur de gaine thermorétractable (article 20) sur chacun des fils des clignotants de manière à ce qu'elle passe par-dessus la queue des caches écrou/fil (comme illustré ci-dessus) et chauffez soigneusement pour rétrécir la gaine thermorétractable.
- Répétez ce qui précède pour l'autre clignotant.
- MONTEZ LES DEUX SUPPORTS CLIGNOTANTS SUR LE SUPPORT DE PLAQUE D'IMMATRICULATION (ARTICLE 1) À L'AIDE DE QUATRE BOULONS M6x6mm (ARTICLE 18) NE SERRER PAS À CE STADE.
- MONTEZ L'ENSEMBLE COMPLET SUR LA MOTO COMME D'ORIGINE EN UTILISANT LES QUATRE BOULONS ET RONDELLES M8 (ARTICLES 2 ET 3) COMME INDIQUÉ SUR LA PHOTO 9 ET SERRER.
- BRANCHER TOUTES LES PRISES DE CÂBLAGE ET LES CONNECTEURS, Y COMPRIS LE CONNECTEUR DE FEU ARRIÈRE/FEU STOP.
- A CE STADE, IL EST CONSEILLE DE VERIFIER LE FONCTIONNEMENT DE TOUS LES FEUX.
- RANGEZ LES FILS À L'AIDE DES ATTACHES DE CÂBLES ET DES PINCES (ARTICLES 13 ET 14) ET PLACEZ-LES DANS L'ESPACE OÙ LES FILS ÉTAIENT INITIALEMENT.
- PLACEZ LE BOULON M6 x 20 mm AVEC RONDELLE (ARTICLES 7 ET 6) À TRAVERS L'ENTRETOISE DE PANNEAU D'ORIGINE, PUIS PLACEZ L'ENTRETOISE FILETEE (ARTICLE 4) SUR LE FILETAGE EXPOSÉ COMME INDIQUÉ SUR LA PHOTO 4 ET PRÉSENTEZ LE EN POSITION COMME D'ORIGINE ET UTILISEZ L'ÉCROU NYLOC POUR FIXER EN POSITION COMME INDIQUÉ SUR LA PHOTO 11.
- REMONTER LES DEUX RIVETS DE VIS PLASTIQUE
- REPOSER LES DEUX RIVETS DE VIS PLASTIQUE.

R&G

Unit 1, Shelley's Lane, East Worldham, Alton, Hampshire, GU34 3AQ

Tel: +44 (0)1420 89007 Fax: +44 (0)1420 87301 www.rg-racing.com Email: info@rg-racing.com



- REPOSER LA PLAQUE D'IMMATRICULATION (CELA PEUT NÉCESSITER UN PERÇAGE).
- **IMPORTANT: SI VOUS INSTALLEZ UNE PLAQUE D'IMMATRICULATION DE GRANDE TAILLE ET LA PLACEZ LOIN VERS LE BAS SUR LE SUPPORT DE PLAQUE D'IMMATRICULATION, IL Y A UNE FAIBLE CHANCE QUE LA PLAQUE D'IMMATRICULATION FRAPPE LA ROUE ARRIÈRE SOUS L'EFFET D'UNE CHARGE LOURDE ET SUR DE GRANDES BOSSES SUR LA ROUTE. IL EST DE VOTRE RESPONSABILITÉ DE VÉRIFIER CETTE POSSIBILITÉ ET DE PRENDRE DES MESURES POUR L'ÉVITER. NE PAS VÉRIFIER CECI POURRAIT ENTRAÎNER DES BLESSURES GRAVES.**
- REMONTER LE SIÈGE.
- SELON LES LOIS LOCALES, FIXER LE RÉFLECTEUR ROUGE FOURNI (ARTICLE 15) DANS UN ENDROIT APPROPRIÉ.
- TESTEZ LES CLIGNOTANTS, L'ÉCLAIRAGE DE PLAQUE D'IMMATRICULATION ET TOUS LES FEUX AVANT DE CONDUIRE.

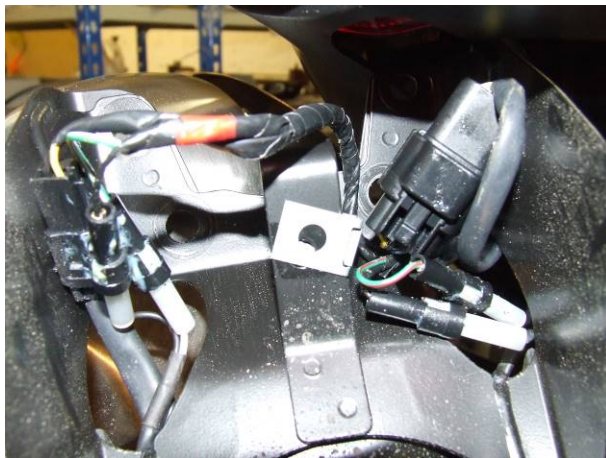


PHOTO 3

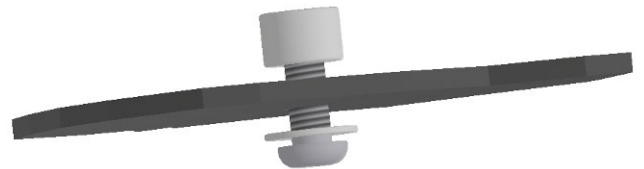


PHOTO 4

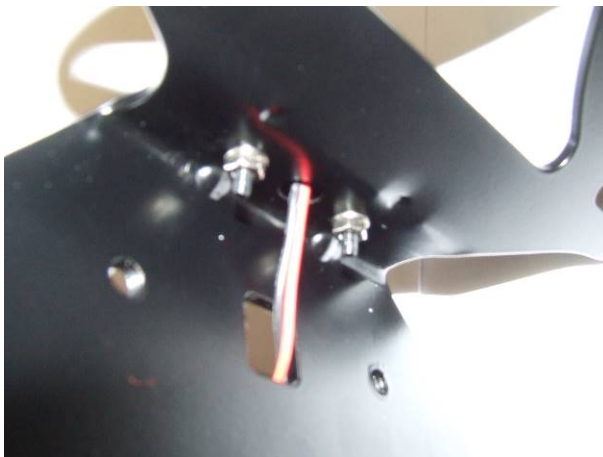


PHOTO 5



PHOTO 6

R&G

Unit 1, Shelley's Lane, East Worldham, Alton, Hampshire, GU34 3AQ

Tel: +44 (0)1420 89007 Fax: +44 (0)1420 87301 www.rg-racing.com Email: info@rg-racing.com

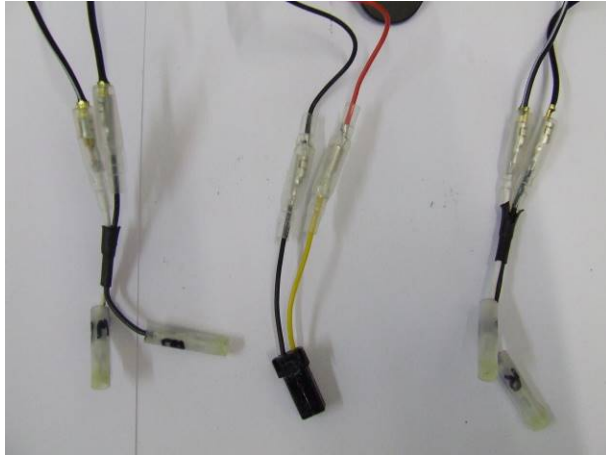


PHOTO 7

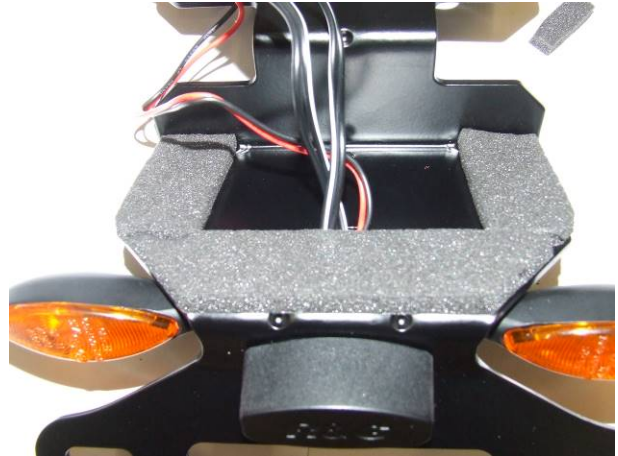


PHOTO 8



PHOTO 9



PHOTO 10



PHOTO 11



PHOTO 12



ISSUE 3 11/06/21 (AO)

CONSUMER NOTICE

The catalogue description and any exhibition of samples are only broad indications of the Products and R&G may make design changes which do not diminish their performance or visual appeal and supplying them in such state shall conform to the order. The Buyer acknowledges no representation or warranty (other than as to title) has been given or will apply to the Products other than those in R&G's order or confirmation and the Buyer confirms it has chosen the Products as being of merchantable quality and suitable for its particular purposes. Where R&G fits the Products or undertakes other services it shall exercise reasonable skill and care and rectify any fault free of charge unless the workmanship has been disturbed. The Buyer is responsible for ensuring that the warranty on the motorcycle is not affected by the fitting of the Products. On return of any defective Products R&G shall at its option either supply a replacement or refund the purchase money but shall not be liable if the Products have been modified or used or maintained otherwise than in accordance with R&G's or manufacturer's instructions and good engineering practice or if the defect arises from accident or neglect. Other than identified above and subject to R&G not limiting its liability for causing death and personal injury, it shall not be liable for indirect or consequential loss and otherwise its liability shall be limited to the amounts paid by the Buyer for the Products or the fitting or service concerned. These terms do not affect the Buyer's statutory rights.

R&G RETURNS POLICY (NON-FAULTY GOODS)

Returns must be pre-authorized (if not pre-authorized the return will be rejected). Goods may only be returned direct to us if they were purchased direct from us (customer must prove if necessary). Otherwise to be returned to original vendor. Goods must be in re-sellable condition, in the opinion of R&G. All returns are subject to a 25% restocking and handling fee (25% of the gross value exc. P&P – at the prevailing price at time of purchase). The customer must pay any and all carriage charges. No returns of discontinued products, unless within 14 days of purchase. This policy does not affect your statutory rights and does not refer to faulty goods.

R&G

Unit 1, Shelley's Lane, East Worldham, Alton, Hampshire, GU34 3AQ

Tel: +44 (0)1420 89007 Fax: +44 (0)1420 87301 www.rg-racing.com Email: info@rg-racing.com



MONTAGEANLEITUNG FÜR LP0099BK KENNZEICHENHALTER
TRIUMPH SPEED TRIPLE 2011-
(FÜR VERWENDUNG MIT STANDARD UND R&G MINIBLINKER (8mm))



ALLE KIT-TEILE SIND AUF DEN NACHFOLGENDEN SEITEN ABGEBILDET UND GEKENNZEICHNET.

DIE ABGEBILDETEN TEILE DIENEN LEDIGLICH ZUR ERKLÄRUNG.

ÜBERPRÜFEN SIE ZUERST, DASS ALLE TEILE VORHANDEN SIND.

LESEN SIE DIE MONTAGEANLEITUNG KOMPLETT DURCH, BEVOR SIE ANFANGEN.

**WENN SIE BEI DER MONTAGE DIESES PRODUKTES UNSICHER SIND, BITTE EINEN
UNSERER HÄNDLER KONTAKTIEREN ODER DAS KIT VON EINEM QUALIFIZIERTEN
ZWEIRAD-MECHANIKER MONTIEREN LASSEN.**

DIE VERPACKUNG DER TEILE STELLT NICHT DIE REIHENFOLGE DER MONTAGE DAR.

HINWEIS FÜR KITS MIT PLASTIKUNTERLEGSCHLEIBEN AN DEN SCHRAUBEN –
DIESE PLASTIK-UNTERLEGSCHLEIBEN WERDEN NICHT FÜR DEN EINBAU BENÖTIGT!

**EINE DIGITALE VERSION DIESER MONTAGEANLEITUNG KANN AUF FOLGENDER
SEITE HERUNTERGELADEN WERDEN:**

WWW.RG-RACING.COM

R&G

Unit 1, Shelley's Lane, East Worldham, Alton, Hampshire, GU34 3AQ

Tel: +44 (0)1420 89007 Fax: +44 (0)1420 87301 www.rg-racing.com Email: info@rg-racing.com



<u>SIE BENÖTIGEN FOLGENDES WERKZEUG</u>	<u>ALLGEM. ANZUGSDREHMOMENT</u>
<ul style="list-style-type: none"> • Satz Inbusschlüssel inkl. 4 & 5mm A/F • 6, 10 und 12mm Schraubenschlüssel oder Steckschlüssel <ul style="list-style-type: none"> • Kreuzschlitzschraubenzieher • Seitenschneider • Kleine Menge Sekundenkleber 	M4 SCHRAUBE = 8Nm M5 SCHRAUBE = 12Nm M6 SCHRAUBE = 15Nm M8 SCHRAUBE = 20Nm M10 SCHRAUBE = 40Nm M12 SCHRAUBE = 40Nm

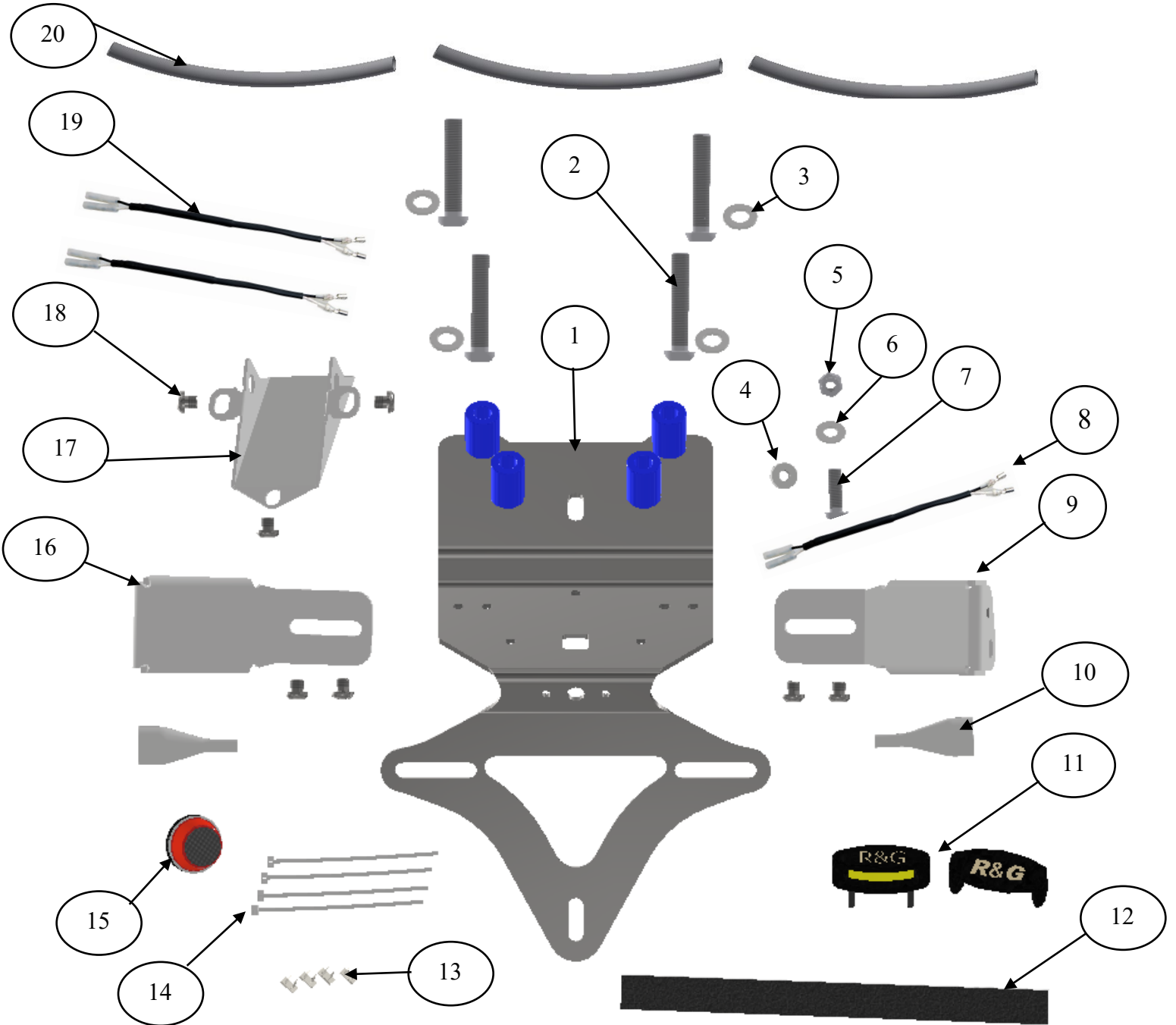
LIEFERUMFANG

ARTIKEL NR.	BESCHREIBUNG	MENGE
ARTIKEL 1	KENNZEICHENHALTER (TB0099 TEIL 1 MIT DISTANZHALTERN)	1
ARTIKEL 2	M8 x 45mm INBUSSCHRAUBE	4
ARTIKEL 3	M8 UNTERLEGSCHIEBE	4
ARTIKEL 4	VERKLEIDUNGSTEIL DISTANZHALTER (S1219-8mm BREIT)	1
ARTIKEL 5	M6 SELBSTSICHERNDE MUTTER	1
ARTIKEL 6	M6 UNTERLEGSCHIEBE	1
ARTIKEL 7	M6 x 20mm INBUSSCHRAUBE	1
ARTIKEL 8	VERBINDUNG FÜR KENNZEICHENBELEUCHTUNG (CON0065)	1
ARTIKEL 9	BLINKER-HALTERUNG RECHTE SEITE (TB0099 PART 4)	1
ARTIKEL 10	BLINKER KABELABDECKUNG (IWC0002)	2
ARTIKEL 11	LA0002 KENNZEICHENBELEUCHTUNG MIT ABDECKUNG	1
ARTIKEL 12	150mm SELBSTKLEBENDER SCHAUMSTOFFSTREIFEN	2
ARTIKEL 13	SELBSTKLEBENDE KABELCLIPS	4
ARTIKEL 14	2,5mm KABELBINDER	4
ARTIKEL 15	RÜCKSTRAHLER (REFL3)	1
ARTIKEL 16	BLINKER-HALTERUNG LINKE SEITE (TB0099 TEIL 3)	1
ARTIKEL 17	KABELABDECKUNG/BLINKER-HALTERUNG (TB0099 TEIL 2)	1
ARTIKEL 18	M6 x 6mm INBUSSCHRAUBE	7
ARTIKEL 19	VERBINDUNG FÜR MINIBLINKER (CON0046)	2
ARTIKEL 20	150mm SCHRUMPFSCHLAUCH	3

R&G

Unit 1, Shelley's Lane, East Worldham, Alton, Hampshire, GU34 3AQ

Tel: +44 (0)1420 89007 Fax: +44 (0)1420 87301 www.rg-racing.com Email: info@rg-racing.com



R&G

Unit 1, Shelley's Lane, East Worldham, Alton, Hampshire, GU34 3AQ

Tel: +44 (0)1420 89007 Fax: +44 (0)1420 87301 www.rg-racing.com Email: info@rg-racing.com

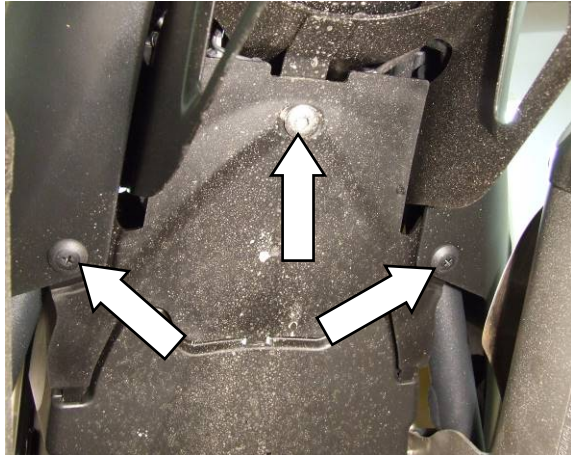


ABBILDUNG 1

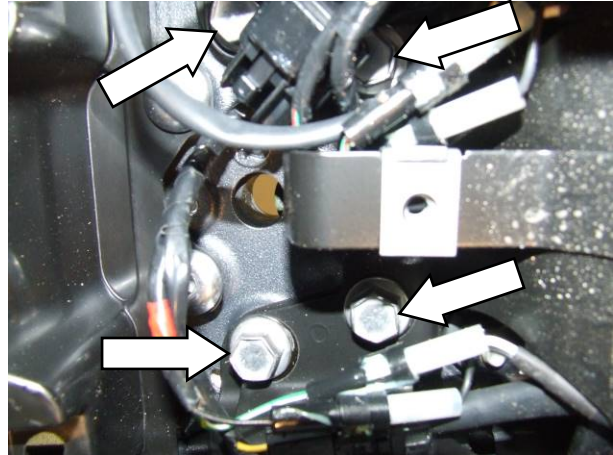


ABBILDUNG 2

MONTAGEANLEITUNG

- ENTFERNEN SIE DEN SITZ.
- ENTFERNEN SIE DIE KABELABDECKUNG (**SIEHE ABBILDUNG 1**), INDEMN SIE DIE SCHRAUBE UND DIE ZWEI PLASTIKNIETEN ENTFERNEN, DIE IN **ABBILDUNG 1** ABGEBILDET SIND.
- ENTFERNEN SIE DIE VIER SCHRAUBEN, DIE IN **ABBILDUNG 2** MIT PFEILEN MARKIERT SIND MIT EINEM 12mm STECKSCHLÜSSEL. DANACH DEN KENNZEICHENHALTER VORSICHTIG ABSETZEN.
- TRENNEN SIE DIE KABELVERBINDER FÜR DIE BLINKER, DAS RÜCKLICHT UND DIE KENNZEICHENBELEUCHTUNG (**SIEHE ABBILDUNG 3**).
- MONTIEREN SIE DIE KENNZEICHENBELEUCHTUNG (**ARTIKEL 11**) WIE IN **ABBILDUNG 5** ABGEBILDET. BITTE DIE MITGELIEFERTE VERBINDUNG (**ARTIKEL 8**) BENUTZEN WIE IN **ABBILDUNG 7** ABGEBILDET. DIE KABELFÜHRUNG IST WIE FOLGT:

•		ORIGINALKABEL----- NEUES KABEL
	KENNZEICHENBELEUCHTUNG	SCHWARZ ----- SCHWARZ
		GELB -----ROT

- FIXIEREN SIE DIE LICHTABDECKUNG (**LH0004**) MIT EINER KLEINEN MENGE SEKUNDENKLEBER.

WENN SIE MINIBLINKER MONTIEREN (R&G ARTIKEL-NR. RG370, RG371 OR RG0372)

- MONTIEREN SIE DIE BLINKER AN DER KABELABDECKUNG/BLINKERHALTERUNG (**ARTIKEL 17**) WIE IN **ABBILDUNG 6** ABGEBILDET.
- WENN SIE MINIBLINKER VERWENDEN, BENUTZEN SIE DIE MITGELIEFERTEN VERBINDUNGEN (**ARTIKEL 19**) WIE IN **ABBILDUNG 7** ABGEBILDET. DIE KABELFÜHRUNG IST WIE FOLGT:

		ORIGINALKABEL-----NEUES KABEL
	RECHTER BLINKER	SCHWARZ-----SCHWARZ
		WEISS/GRÜN-----SCHWARZ/WEISS
	LINKER BLINKER	SCHWARZ-----SCHWARZ
		GRÜN/ROT-----SCHWARZ/WEISS

R&G

Unit 1, Shelley's Lane, East Worldham, Alton, Hampshire, GU34 3AQ

Tel: +44 (0)1420 89007 Fax: +44 (0)1420 87301 www.rg-racing.com Email: info@rg-racing.com



- MONTIEREN SIE DEN SELBSTKLEBENDEN SCHAUMSTOFF (**ARTIKEL 12**) WIE IN **ABBILDUNG 8** ABGEBILDET.
- WENN SIE DIE MINIBLINKER VERWENDEN (AUF DER KABELABDECKUNG MONTIERT WIE IN DER OBEREN ABBILDUNG ABGEBILDET), MONTIEREN SIE DIE BAUGRUPPE (**SIEHE ABBILDUNG 6**) AM KENNZEICHENHALTER (**ARTIKEL 1**) MIT DREI M6x6mm INBUSSCHRAUBEN (**ARTIKEL 18**).

WENN SIE DIE ORIGINALBLINKER MONTIEREN.

- MONTIEREN SIE DEN LINKEN BLINKER AN DER LINKEN BLINKERHALTERUNG (**ARTIKEL 16**), WIE IN **ABBILDUNG 21** ABGEBILDET. VERWENDEN SIE DIE ORIGINALSCHRAUBE UND FÜHREN SIE DIE KABEL DURCH DAS LOCH IN DER KABELABDECKUNG.
- MONTIEREN SIE DEN RECHTEN BLINKER AM RECHTEN BLINKERHALTER (**ARTIKEL 9**) WIE IN **ABBILDUNG 21** ABGEBILDET. VERWENDEN SIE DIE ORIGINALSCHRAUBE UND FÜHREN SIE DIE KABEL DURCH DAS LOCH IN DER KABELABDECKUNG.



- FÜHREN SIE DIE KABEL FÜR DIE BLINKER DURCH DIE MUTTER-/KABELABDECKUNG (**ARTIKEL 10**) WIE OBEN ABGEBILDET (ETWAS FLÜSSIGES SPÜLMITTEL KANN HIERBEI HELFEN) UND POSITIONIEREN SIE DIE ABDECKUNG ÜBER DER MUTTER.
- JEWEILS EINE LÄNGE SCHRUMPFSCHAUCH (**ARTIKEL 20**) AN BEIDE BLINKERKABEL ANBRINGEN, SODASS DIE MUTTER-/KABELABDECKUNGEN ABGEDECKT IST (WIE OBEN ABGEBILDET). DEN SCHRUMPFSCHAUCH MIT EINER GEEIGNETEN HITZEQUELLE ERWÄRMEN, UM DEN SCHLAUCH ZU SCHRUMPFEN.
- DIESEN VORGANG MIT DEM ZWEITEN BLINKER WIEDERHOLEN.
- MONTIEREN SIE BEIDE BLINKERHALTERUNGEN AM KENNZEICHENHALTER (**ARTIKEL 1**) UND MIT VIER M6x6mm INBUSSCHRAUBEN (**ARTIKEL 18**) FIXIEREN - ZU DIESEM ZEITPUNKT NOCH NICHT FESTZIEHEN.
- DIE KOMPLETTE KENNZEICHENHALTER-EINHEIT AM MOTORRAD MIT DEN VIER M8 SCHRAUBEN UND UNTERLEGSCHHEIBEN (**ARTIKEL 2 UND 3**) BEFESTIGEN WIE IN **ABBILDUNG 9** ABGEBILDET.
- VERBINDEN SIE ALLE KABELVERBINDER UND STECKVERBINDER INKL. VERBINDUNG FÜR DAS RÜCK-/BREMSLICHT.
- ES EMPFIEHLT SICH NUN, DIE FUNKTION DER KOMPLETTEN BELEUCHTUNG ZU ÜBERPRÜFEN.
- DIE KABEL MIT KABELBINDERN UND KABELCLIPS (**ARTIKEL 13 UND 14**) FIXIEREN UND WIE URSPRÜNGLICH VERLEGEN/VERSTAUEN.
- DIE M6 x 20mm INBUSSCHRAUBE MIT UNTERLEGSCHHEIBE (**ARTIKEL 7 UND 6**) IN DEN ORIGINAL DISTANZHALTER FÜR DAS VERKLEIDUNGSTEIL EINFÜHREN, DANN DEN DISTANZHALTER MIT GEWINDE (**ARTIKEL 4**) AM HERVORSTEHENDEN GEWINDE MONTIEREN

R&G

Unit 1, Shelley's Lane, East Worldham, Alton, Hampshire, GU34 3AQ

Tel: +44 (0)1420 89007 Fax: +44 (0)1420 87301 www.rg-racing.com Email: info@rg-racing.com



WIE IN **ABBILDUNG 4** ABGEBILDET. IN DIE ORIGINALPOSITION BRINGEN. MIT DER SELBSTSICHERNDEN MUTTER IN POSITION BEFESTIGEN -SIEHE **ABBILDUNG 11**.

- MONTIEREN SIE DIE ZWEI PLASTIKNIETEN WIEDER.
- MONTIEREN SIE DAS KENNZEICHEN (BOHRUNGEN IM KENNZEICHEN EVTL. NOTWENDIG).
- **WICHTIG: WENN EIN GROSSES KENNZEICHEN ZU WEIT NACH UNTEN MONTIERT WIRD, BESTEHT BEI SCHWERER LAST ODER DURCH GROSSE BODENWELLEN EIN GERINGES RISIKO, DASS DAS KENNZEICHEN AN DAS HINTERRAD STOSSEN KANN. ES LIEGT IN IHRER VERANTWORTUNG DIES ZU ÜBERPRÜFEN UND, WENN NOTWENDIG, VORZUBEUGENDE MASSNAHMEN ZU ERGREIFEN. DIE NICHTBEACHTUNG DIESER SICHERHEITSHINWEIS KANN ZU SCHWEREN VERLETZUNGEN FÜHREN.**
- MONTIEREN SIE DEN SITZ WIEDER.
- ENTSPRECHEND DER GESETZLICHEN VORSCHRIFTEN, DEN MITGELIEFERTEN RÜCKSTRAHLER (**ARTIKEL 15**) AN DIE DAFÜR VORGESEHENE STELLE ANBRINGEN.
- ÜBERPRÜFEN SIE DIE FUNKTION DER BELEUCHTUNG (BLINKER UND KENNZEICHEN-BELEUCHTUNG) VOR GEBRAUCH DES FAHRZEUGES.

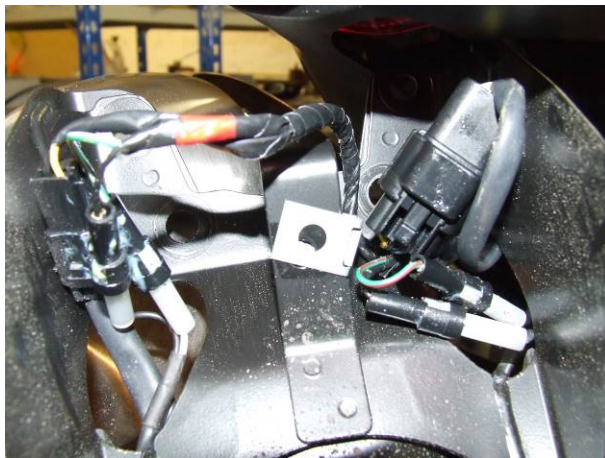


ABBILDUNG 3

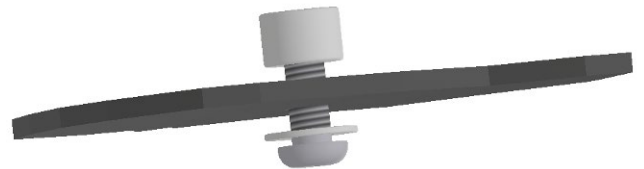


ABBILDUNG 4

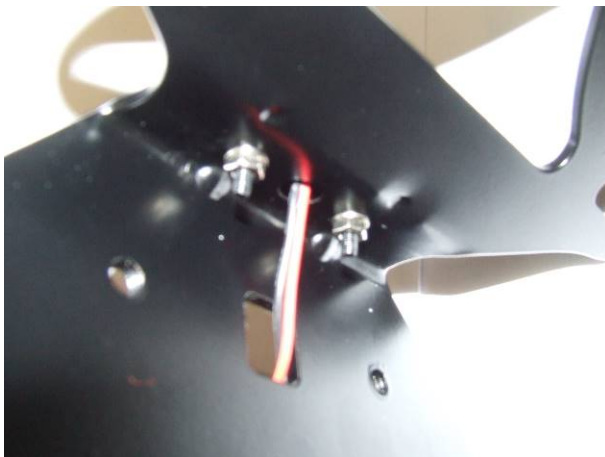


ABBILDUNG 5



ABBILDUNG 6

R&G

Unit 1, Shelley's Lane, East Worldham, Alton, Hampshire, GU34 3AQ

Tel: +44 (0)1420 89007 Fax: +44 (0)1420 87301 www.rg-racing.com Email: info@rg-racing.com

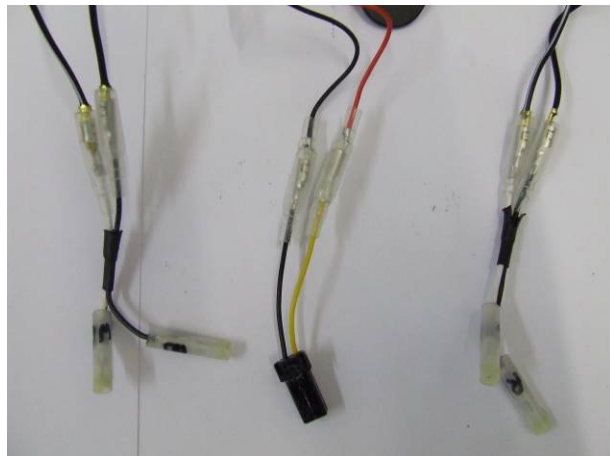


ABBILDUNG 7

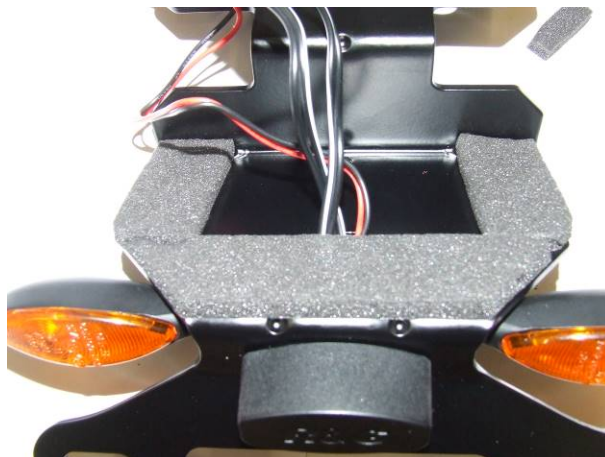


ABBILDUNG 8



ABBILDUNG 9



ABBILDUNG 10



ABBILDUNG 11



ABBILDUNG 12

AUSGABE 3 11/06/21 (AO)

R&G

Unit 1, Shelley's Lane, East Worldham, Alton, Hampshire, GU34 3AQ

Tel: +44 (0)1420 89007 Fax: +44 (0)1420 87301 www.rg-racing.com Email: info@rg-racing.com



CONSUMER NOTICE

The catalogue description and any exhibition of samples are only broad indications of the Products and R&G may make design changes which do not diminish their performance or visual appeal and supplying them in such state shall conform to the order. The Buyer acknowledges no representation or warranty (other than as to title) has been given or will apply to the Products other than those in R&G's order or confirmation and the Buyer confirms it has chosen the Products as being of merchantable quality and suitable for its particular purposes. Where R&G fits the Products or undertakes other services it shall exercise reasonable skill and care and rectify any fault free of charge unless the workmanship has been disturbed. The Buyer is responsible for ensuring that the warranty on the motorcycle is not affected by the fitting of the Products. On return of any defective Products R&G shall at its option either supply a replacement or refund the purchase money but shall not be liable if the Products have been modified or used or maintained otherwise than in accordance with R&G's or manufacturer's instructions and good engineering practice or if the defect arises from accident or neglect. Other than identified above and subject to R&G not limiting its liability for causing death and personal injury, it shall not be liable for indirect or consequential loss and otherwise its liability shall be limited to the amounts paid by the Buyer for the Products or the fitting or service concerned. These terms do not affect the Buyer's statutory rights.

R&G RETURNS POLICY (NON-FAULTY GOODS)

Returns must be pre-authorized (if not pre-authorized the return will be rejected). Goods may only be returned direct to us if they were purchased direct from us (customer must prove if necessary). Otherwise to be returned to original vendor. Goods must be in re-sellable condition, in the opinion of R&G. All returns are subject to a 25% restocking and handling fee (25% of the gross value exc. P&P – at the prevailing price at time of purchase). The customer must pay any and all carriage charges. No returns of discontinued products, unless within 14 days of purchase. This policy does not affect your statutory rights and does not refer to faulty goods.

R&G

Unit 1, Shelley's Lane, East Worldham, Alton, Hampshire, GU34 3AQ

Tel: +44 (0)1420 89007 Fax: +44 (0)1420 87301 www.rg-racing.com Email: info@rg-racing.com