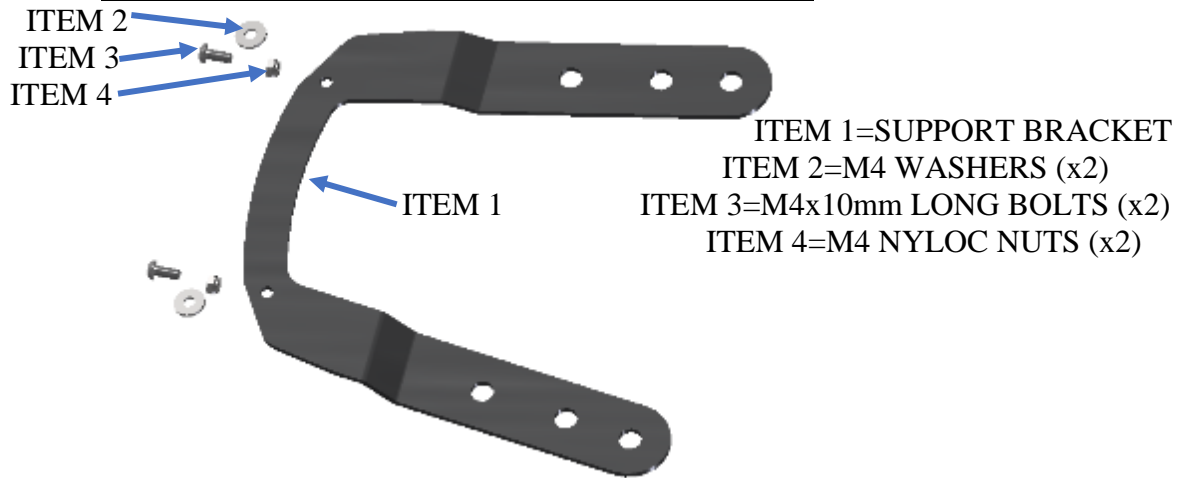




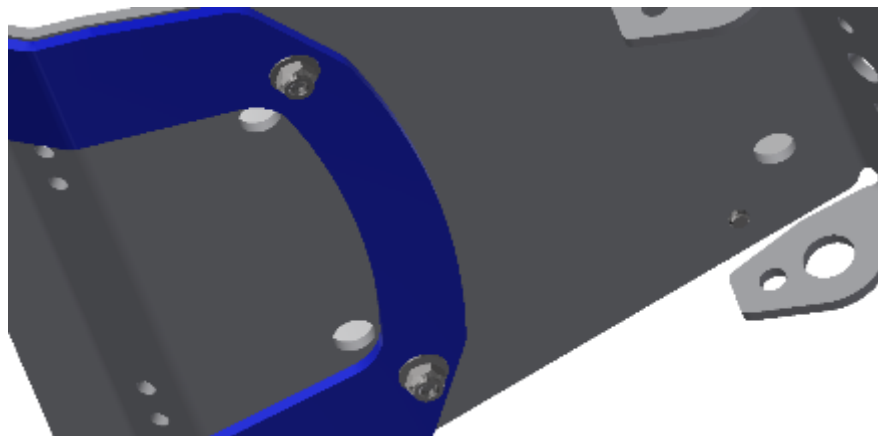
FITTING INSTRUCTIONS FOR LP0250BKPLATEKIT LICENCE PLATE SUPPORT BRACKET
HUSQVARNA VITPILEN/SVARTPILEN 401 2018



Picture 1



Picture 2



Picture 3



FITTING INSTRUCTIONS

- To fit the R&G tail tidy support bracket, first remove the two bolts arrowed in picture 1 and replace with the new longer M4 bolts (item 3).
- Remove the four bolts with washers and the two rubber grommets arrowed in picture 2 while holding the licence plate bracket in position.
- Place the support bracket (item 1) into position as shown in picture 3 and secure in position reusing the M8 bolts and washers just removed and tighten.
- Place the two M4 washers (item 2) onto the exposed end of the M4 bolts and secure and tighten using the two M4 nuts (item 4) as shown in picture 3.
- Refit the two rubber grommets into the support bracket.

ISSUE 1 14/10/2019 (NSY)

CONSUMER NOTICE

The catalogue description and any exhibition of samples are only broad indications of the Products and R&G may make design changes which do not diminish their performance or visual appeal and supplying them in such state shall conform to the order. The Buyer acknowledges no representation or warranty (other than as to title) has been given or will apply to the Products other than those in R&G's order or confirmation and the Buyer confirms it has chosen the Products as being of merchantable quality and suitable for its particular purposes. Where R&G fits the Products or undertakes other services it shall exercise reasonable skill and care and rectify any fault free of charge unless the workmanship has been disturbed. The Buyer is responsible for ensuring that the warranty on the motorcycle is not affected by the fitting of the Products. On return of any defective Products R&G shall at its option either supply a replacement or refund the purchase money but shall not be liable if the Products have been modified or used or maintained otherwise than in accordance with R&G's or manufacturer's instructions and good engineering practice or if the defect arises from accident or neglect. Other than identified above and subject to R&G not limiting its liability for causing death and personal injury, it shall not be liable for indirect or consequential loss and otherwise its liability shall be limited to the amounts paid by the Buyer for the Products or the fitting or service concerned. These terms do not affect the Buyer's statutory rights.

R&G RACING RETURNS POLICY (NON-FAULTY GOODS)

Returns must be pre-authorized (if not pre-authorized the return will be rejected). Goods may only be returned direct to us if they were purchased direct from us (customer must prove if necessary). Otherwise to be returned to original vendor. Goods must be in re-sellable condition, in the opinion of R&G Racing. All returns are subject to a 25% restocking and handling fee (25% of the gross value exc. P&P – at the prevailing price at time of purchase). The customer must pay any and all carriage charges. No returns of discontinued products, unless within 14 days of purchase. This policy does not affect your statutory rights and does not refer to faulty goods.

R&G

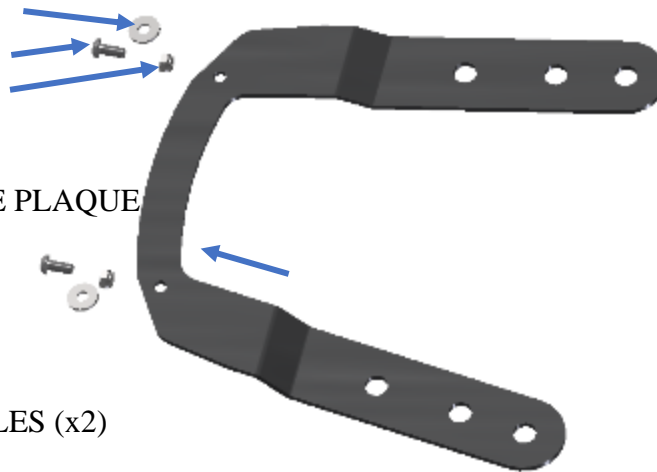
Unit 1, Shelley's Lane, East Worldham, Alton, Hampshire, GU34 3AQ

Tel: +44 (0)1420 89007 Fax: +44 (0)1420 87301 www.rg-racing.com Email: info@rg-racing.com



NOTICE DE MONTAGE POUR LP0250BK SUPPORT DE PLAQUE
HUSQVARNA VITPILEN/SVARTPILEN 401 2018

ARTICLE 2
 ARTICLE 3
 ARTICLE 4



ARTICLE 1= SUPPORT DE PLAQUE

ARTICLE 2=M4 RONDELLES (x2)

ARTICLE 3=M4x10mm BOULONS (x2)

ARTICLE 4=M4 ECROUS (x2)

NOTICE DE MONTAGE

- Pour monter le support de plaque R&G, retirez d'abord les deux boulons indiqués par une flèche sur la photo 1 et remplacez-les par les nouveaux boulons M4 plus longs (article 3).
- Retirez les quatre boulons avec rondelles et les deux œillets en caoutchouc fléchés sur la photo 2 tout en maintenant le support de la plaque d'immatriculation en place.
- Placez le support (article 1) dans la position indiquée sur la photo 3 et fixez-le en réutilisant les boulons M8 et les rondelles que vous venez de retirer et serrez.
- Placez les deux rondelles M4 (article 2) sur l'extrémité exposée des boulons M4, puis fixez et serrez à l'aide des deux écrous M4 (article 4) comme indiqué sur la photo 3.
- Remplacez les deux œillets en caoutchouc dans le support.

ISSUE 1 14/10/2019 (NSY)

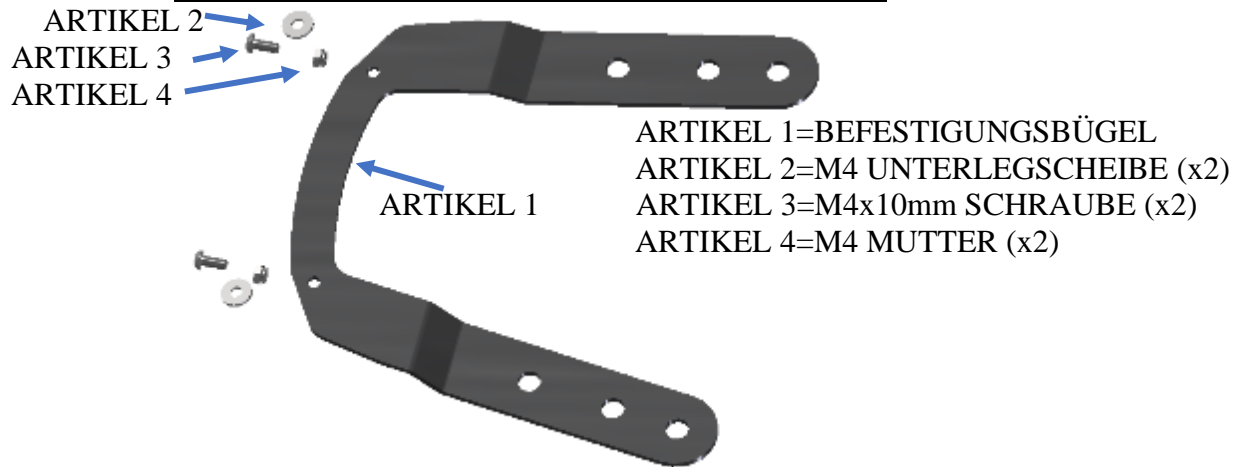
R&G

Unit 1, Shelley's Lane, East Worldham, Alton, Hampshire, GU34 3AQ

Tel: +44 (0)1420 89007 Fax: +44 (0)1420 87301 www.rg-racing.com Email: info@rg-racing.com



**MONTAGEANLEITUNG FÜR LP0250BK BEFESTIGUNGSBÜGEL KENNZEICHENHALTER
HUSQVARNA VITPILEN/SVARTPILEN 401 2018**



MONTAGEANLEITUNG

- Um den R&G Kennzeichenhalter-Befestigungsbügel montieren zu können, entfernen Sie zuerst die zwei Schrauben, die in Abbildung 1 mit Pfeilen gekennzeichnet sind und ersetzen Sie sie mit den neuen, längeren M4 Schrauben (Artikel 3).
- Entfernen Sie die vier Schrauben mit Unterlegscheiben und die zwei Gummitüllen, die in Abbildung 2 gekennzeichnet sind während Sie die Kennzeichenhalterung in Position halten.
- Den Befestigungsbügel (Artikel 1) in Position bringen wie in Abbildung 3 abgebildet mit den soeben entfernten M8 Schrauben und Unterlegscheiben befestigen.
- Die zwei M4 Unterlegscheiben (Artikel 2) an den hervorstehenden Enden der M4 Schrauben und mit den zwei M4 Muttern (Artikel 4) sichern und befestigen wie in Abbildung 3 abgebildet.
- Montieren Sie die zwei Gummitüllen wieder im Befestigungsbügel.

AUSGABE 1 14/10/2019 (NSY)

R&G

Unit 1, Shelley's Lane, East Worldham, Alton, Hampshire, GU34 3AQ
Tel: +44 (0)1420 89007 Fax: +44 (0)1420 87301 www.rg-racing.com Email: info@rg-racing.com