



FITTING INSTRUCTIONS FOR RAD0378PRO



THIS KIT CONTAINS THE ITEMS PICTURED AND LABELLED OVER PAGE.
SOME PARTS MAY BE SHOWN FOR CLARITY OF INSTRUCTIONS ONLY.

DO NOT PROCEED UNTIL YOU ARE SURE ALL PARTS ARE PRESENT.

PLEASE READ ALL INSTRUCTIONS BEFORE PROCEEDING.

**IF IN ANY DOUBT WHEN FITTING OUR PRODUCTS, CONSULT ONE OF OUR DEALERS
OR HAVE FITTED BY A QUALIFIED TECHNICIAN.**

PLEASE NOTE THAT THE WAY THE KIT IS PACKED DOES NOT NECESSARILY REPRESENT THE WAY OF
MOUNTING TO THE BIKE.

IN THE EVENT OF RUBBER WASHERS BEING USED TO HOLD COMPONENTS ONTO BOLTS,
THESE RUBBER WASHERS CAN BE THROWN AWAY.

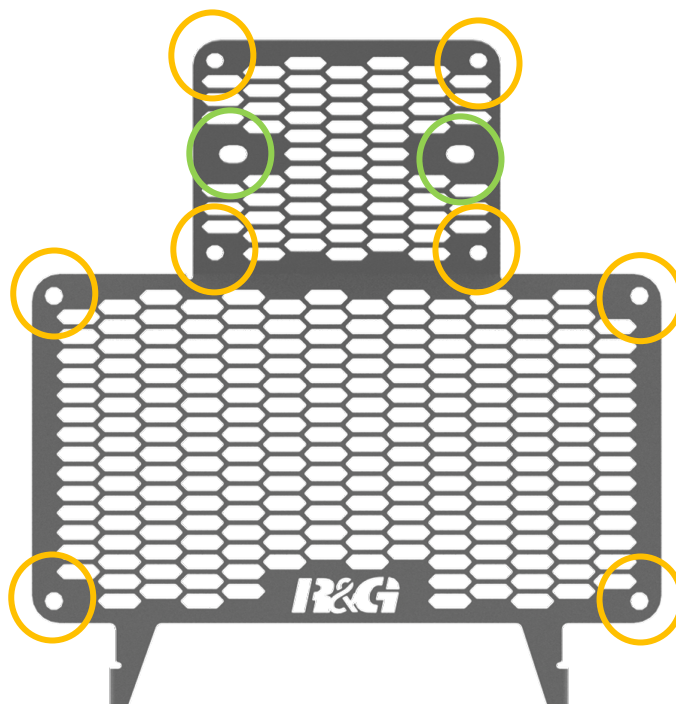


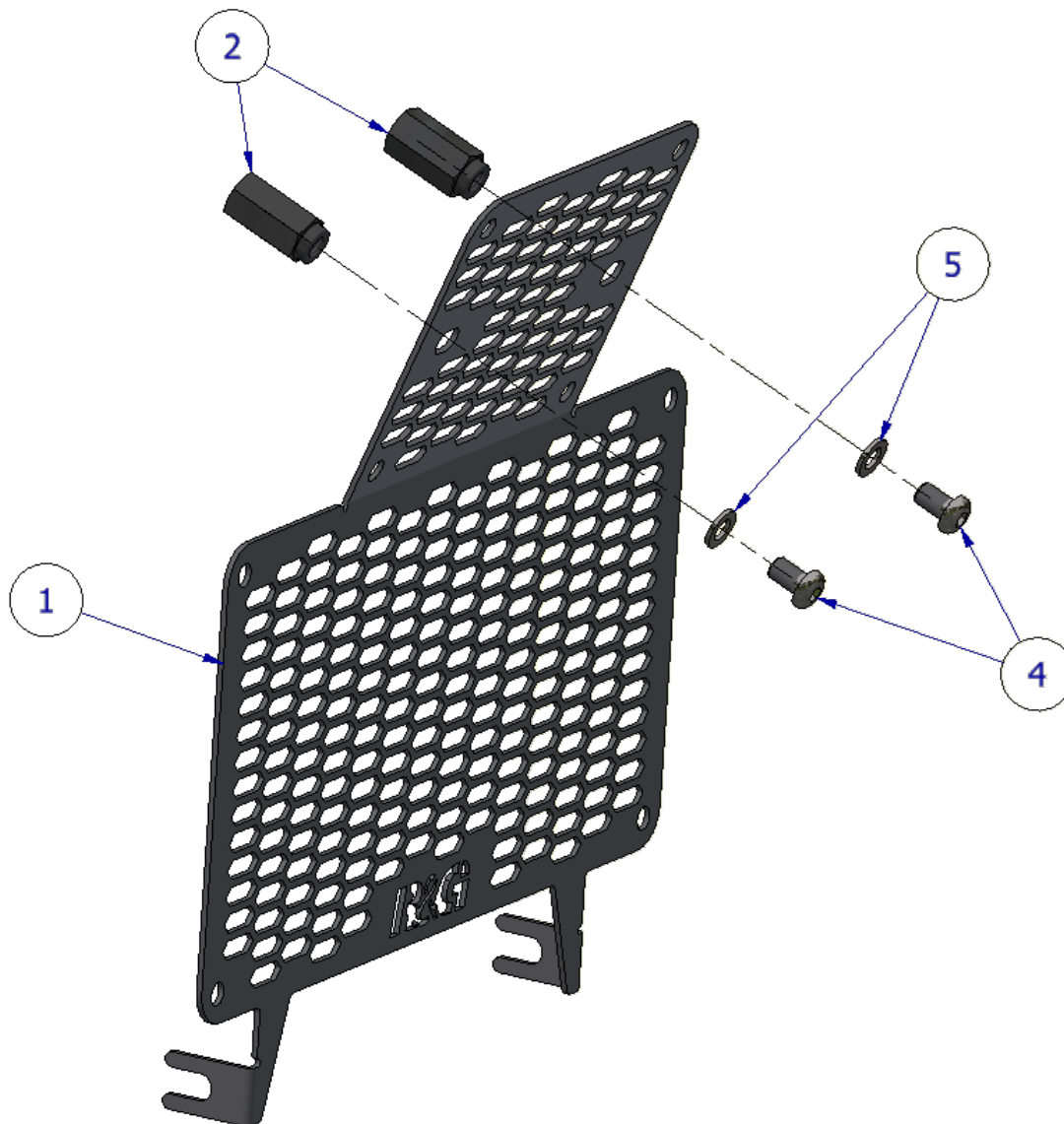
<u>TOOLS REQUIRED</u>	<u>GENERAL TORQUE SETTINGS</u>
<ul style="list-style-type: none"> • SET OF ALLEN KEYS • METRIC SOCKET SET 	M4 BOLT = 8Nm M5 BOLT = 12Nm M6 BOLT = 15Nm M8 BOLT = 20Nm M10 BOLT = 40Nm M12 BOLT = 40Nm

LEGEND

ITEM NO.	DESCRIPTION	QTY
ITEM 1	RADIATOR GUARD (RAD0378)	1
ITEM 2	SPACERS (S0833)	2
ITEM 3	RUBBER BUNGS (RB0015)	10
ITEM 4	M6 x 10mm BUTTON HEAD BOLT	2
ITEM 5	M6 WASHER	2

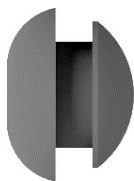
ASSEMBLY DIAGRAMS





FITTING PICTURES

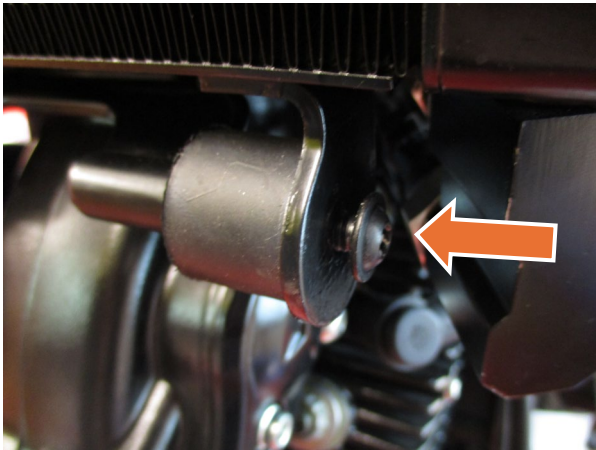
FRONT OF RAD GUARD



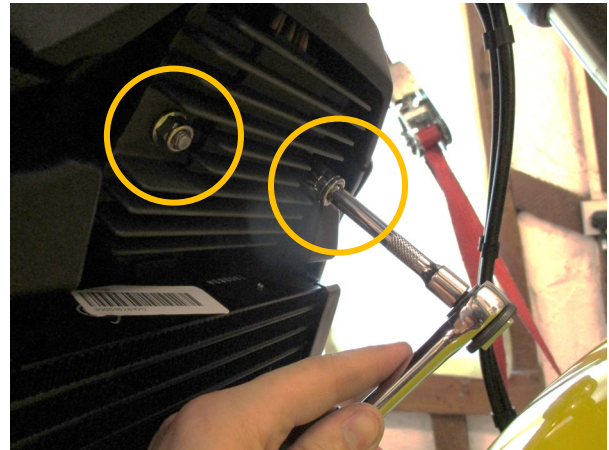
PICTURE 1



PICTURE 2



PICTURE 3



PICTURE 4

FITTING INSTRUCTIONS

- Firstly, carefully clean the radiator, being careful not to damage any of the fins.
- Prepare the radiator guard by inserting the 8x rubber bungs (3) into the radiator guard in the positions circled in orange in the Assembly Diagram.

Please note: *Fitting the bungs is much easier with the use of a 3mm allen/hex key as shown in **Picture 2**, place the bungs on the end of the allen key and carefully push through the holes in the orientation shown in **Picture 1**.*

- Loosen the two allen bolts located at the bottom of the radiator (arrowed in **Picture 3**), to allow 3mm clearance between the bolts and the radiator (shown in **Picture 3**).
- Remove the two nuts securing the voltage regulator (circled in **Picture 4**) and screw the two threaded spacers provided onto the exposed threads.
- Offer the radiator guard into position, ensuring the two mounting tabs sit over the two lower bolts.
- Secure the radiator guard in place by screwing the two M6 bolts (with washers) through the radiator guard, and into the two threaded spacers as shown in the **Assembly Diagram**.
- Tighten the four bolts up to the correct torque.

ISSUE 1 – 15/08/2025 (MH)

CONSUMER NOTICE

The catalogue description and any exhibition of samples are only broad indications of the Products and R&G may make design changes which do not diminish their performance or visual appeal and supplying them in such state shall conform to the order. The Buyer acknowledges no representation or warranty (other than as to title) has been given or will apply to the Products other than those in R&G's order or confirmation and the Buyer confirms it has chosen the Products as being of merchantable quality and suitable for its particular purposes. Where R&G fits the Products or undertakes other services it shall exercise reasonable skill and care and rectify any fault free of charge unless the workmanship has been disturbed. The Buyer is responsible for ensuring that the warranty on the motorcycle is not affected by the fitting of the Products. On return of any defective Products R&G shall at its option either supply a replacement or refund the purchase money but shall not be liable if the Products have been modified or used or maintained otherwise than in accordance with R&G's or manufacturer's instructions and good engineering practice or if the defect arises from accident or neglect. Other than identified above and subject to R&G not limiting its liability for causing death and personal injury, it shall not be liable for indirect or consequential loss and otherwise its liability shall be limited to the amounts paid by the Buyer for the Products or the fitting or service concerned. These terms do not affect the Buyer's statutory rights.

**R&G RACING RETURNS POLICY (NON-FAULTY GOODS)**

Returns must be pre-authorised (if not pre-authorised the return will be rejected). Goods may only be returned direct to us if they were purchased direct from us (customer must prove if necessary). Otherwise to be returned to original vendor. Goods must be in re-sellable condition, in the opinion of R&G Racing. All returns are subject to a 25% restocking and handling fee (25% of the gross value exc. P&P – at the prevailing price at time of purchase). The customer must pay any and all carriage charges. No returns of discontinued products, unless within 14 days of purchase. This policy does not affect your statutory rights and does not refer to faulty goods.



NOTICE DE MONTAGE POUR RAD0378PRO PROTECTION RADIATEUR



CE KIT CONTIENT LES ARTICLES ILLUSTRÉS ET ÉTIQUETES SUR LA PAGE.

CERTAINES PARTIES PEUVENT ÊTRE PRÉSENTES UNIQUEMENT POUR LA CLARTÉ DES INSTRUCTIONS.

NE PAS PROCÉDER AU MONTAGE TANT QUE VOUS N'ÊTES PAS SÛR QUE TOUTES LES PIÈCES SOIENT PRÉSENTES.

VEUILLEZ LIRE TOUTES LES INSTRUCTIONS AVANT DE CONTINUER.

EN CAS DE DOUTE LORS DU MONTAGE DE NOS PRODUITS, CONSULTEZ UN DE NOS REVENDEURS OU FAITES APPEL À UN TECHNICIEN QUALIFIÉ.

VEUILLEZ NOTER QUE LA FAÇON DONT LE KIT EST EMBALLÉ NE REPRÉSENTE PAS NECESSAIREMENT LA MANIÈRE DE LE MONTER SUR LA MOTO.

SI DES RONDELLES EN CAOUTCHOUC SONT UTILISÉES POUR MAINTENIR LES COMPOSANTS SUR LES BOULONS, ELLES PEUVENT ÊTRE JETÉES.

NOTICE DISPONIBLE AU TÉLÉCHARGEMENT SUR :
WWW.RG-RACING.COM

Racing Technique Ltd T/A R&G
Unit 1, Shelley's Lane, East Worldham, Alton, Hampshire, GU34 3AQ
Tel: +44 (0)1420 89007 Fax: +44 (0)1420 87301 www.rg-racing.com Email: info@rg-racing.com

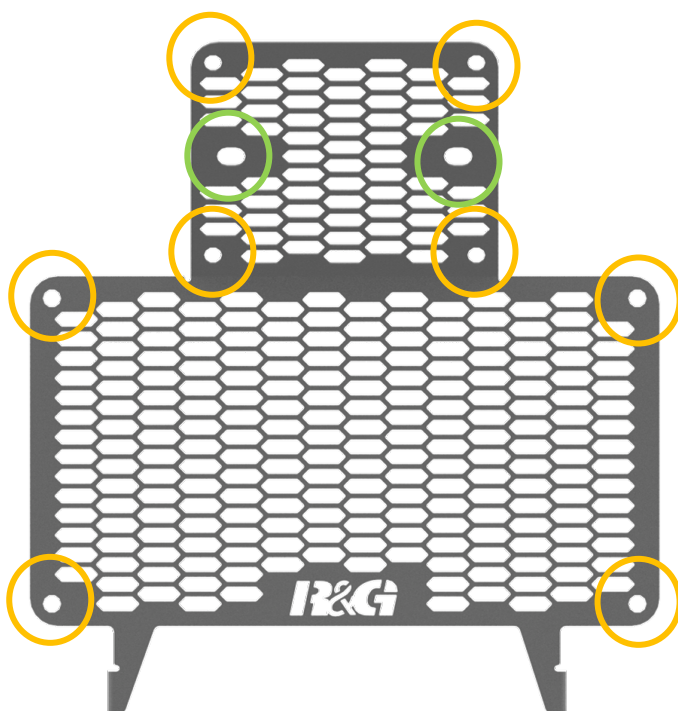


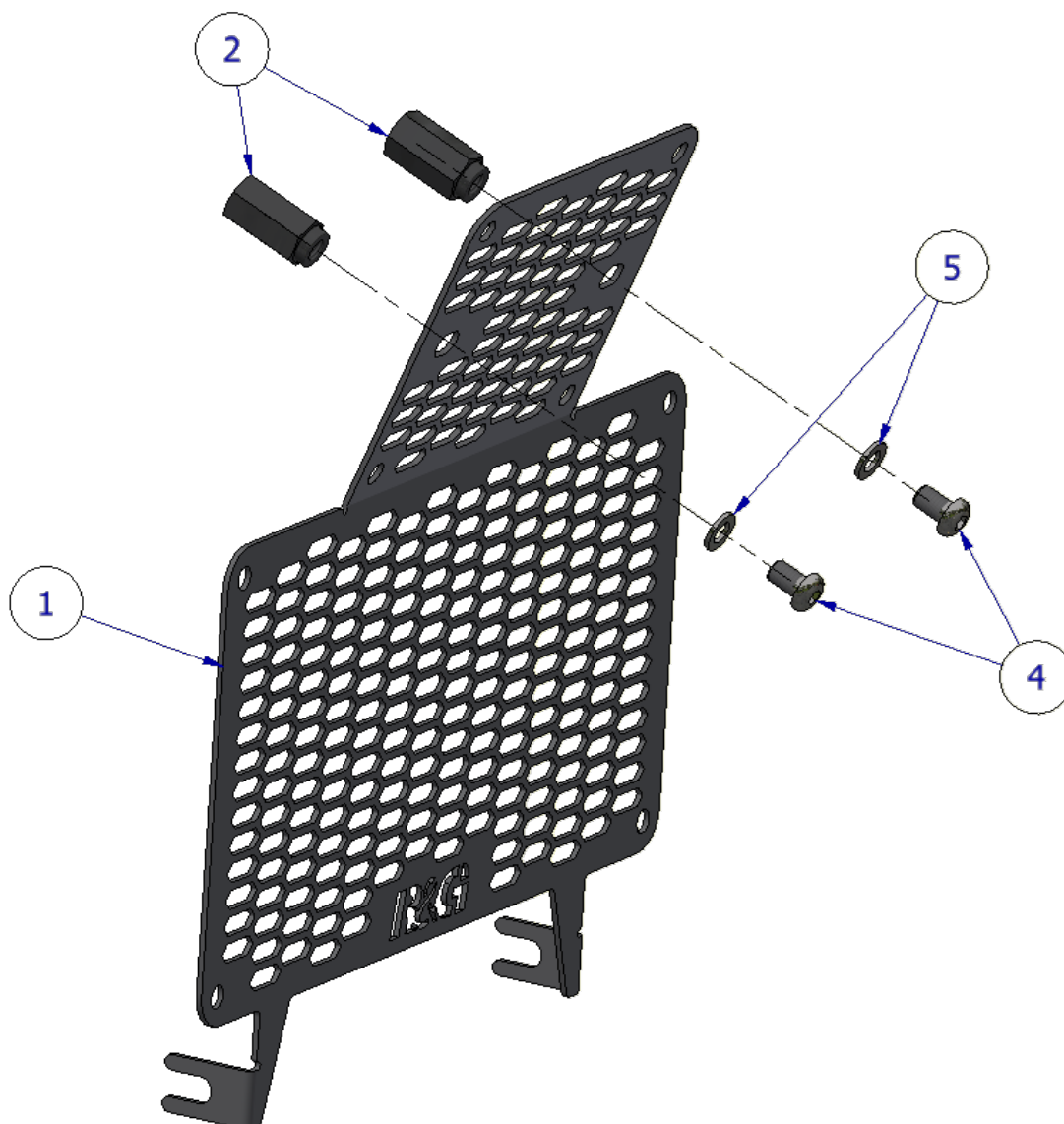
<u>OUTILS REQUIS</u>	<u>VALEURS DE SERRAGE</u>
<ul style="list-style-type: none"> • CLÉS ALLEN • CLÉ MÉTRIQUE 	M4 BOULON = 8Nm M5 BOULON = 12Nm M6 BOULON = 15Nm M8 BOULON = 20Nm M10 BOULON = 40Nm M12 BOULON = 40Nm

LÉGENDE

ARTICLE NO.	DESCRIPTION	QTÉ
ARTICLE 1	PROTECTION RADIATEUR (RAD0378)	1
ARTICLE 2	ENTRETOISE (S0833)	2
ARTICLE 3	BOUCHONS EN CAOUTCHOUC (RB0015)	10
ARTICLE 4	M6 x 10mm BOULON	2
ARTICLE 5	M6 RONDELLE	2

SCHÉMA D'ENSEMBLE





PHOTOS DE MONTAGE

AVANT DE LA PROTECTION

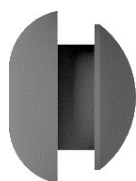


PHOTO 1



PHOTO 2

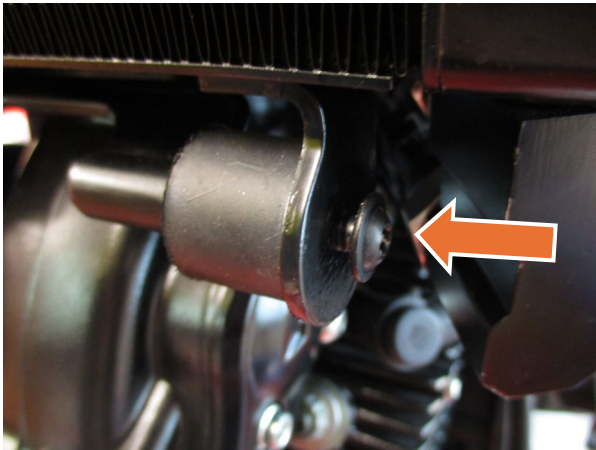


PHOTO 3

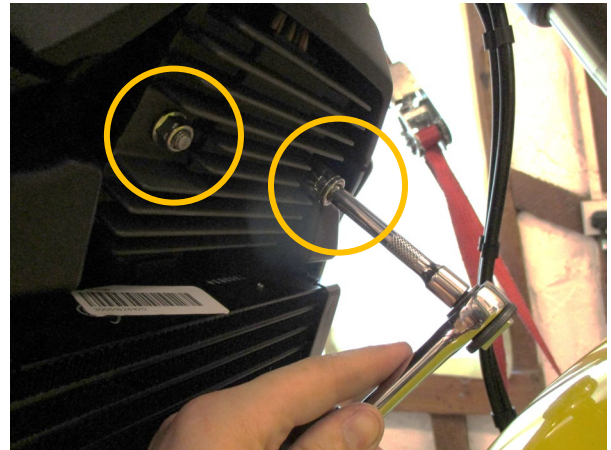


PHOTO 4

NOTICE DE MONTAGE

- Tout d'abord, nettoyez soigneusement le radiateur en veillant à ne pas endommager les ailettes.
- Préparez la protection radiateur en insérant les 8 bouchons en caoutchouc (3) dans les emplacements entourés en orange sur le schéma de montage.

Note : *Le montage des bouchons est beaucoup plus facile avec l'utilisation d'une clé Allen/hexagonale de 3 mm comme indiqué sur l'image 2, placez les bouchons sur l'extrémité de la clé Allen et poussez soigneusement à travers les trous dans l'orientation indiquée sur l'image 1.*

- Desserrez les deux boulons Allen situés au bas du radiateur (flèches sur la photo 3) afin de laisser un espace de 3 mm entre les boulons et le radiateur (voir la photo 3).
- Retirez les deux écrous fixant le régulateur de tension (entourés sur la photo 4) et vissez les deux entretoises filetées fournies sur les filetages apparents.
- Positionnez la protection radiateur en vous assurant que les deux pattes de fixation reposent sur les deux boulons inférieurs.
- Fixez la protection radiateur en vissant les deux boulons M6 (avec rondelles) à travers la protection radiateur et dans les deux entretoises filetées, comme indiqué sur le schéma de montage.
- Serrez les quatre boulons au couple de serrage correct.

ISSUE 1 – 15/08/2025 (MH)

CONSUMER NOTICE

The catalogue description and any exhibition of samples are only broad indications of the Products and R&G may make design changes which do not diminish their performance or visual appeal and supplying them in such state shall conform to the order. The Buyer acknowledges no representation or warranty (other than as to title) has been given or will apply to the Products other than those in R&G's order or confirmation and the Buyer confirms it has chosen the Products as being of merchantable quality and suitable for its particular purposes. Where R&G fits the Products or undertakes other services it shall exercise reasonable skill and care and rectify any fault free of charge unless the workmanship has been disturbed. The Buyer is responsible for ensuring that the warranty on the motorcycle is not affected by the fitting of the Products. On return of any defective Products R&G shall at its option either supply a replacement or refund the purchase money but shall not be liable if the Products have been modified or used

Racing Technique Ltd T/A R&G

Unit 1, Shelley's Lane, East Worldham, Alton, Hampshire, GU34 3AQ

Tel: +44 (0)1420 89007 Fax: +44 (0)1420 87301 www.rg-racing.com Email: info@rg-racing.com



or maintained otherwise than in accordance with R&G's or manufacturer's instructions and good engineering practice or if the defect arises from accident or neglect. Other than identified above and subject to R&G not limiting its liability for causing death and personal injury, it shall not be liable for indirect or consequential loss and otherwise its liability shall be limited to the amounts paid by the Buyer for the Products or the fitting or service concerned. These terms do not affect the Buyer's statutory rights.

R&G RACING RETURNS POLICY (NON-FAULTY GOODS)

Returns must be pre-authorized (if not pre-authorized the return will be rejected). Goods may only be returned direct to us if they were purchased direct from us (customer must prove if necessary). Otherwise to be returned to original vendor. Goods must be in re-sellable condition, in the opinion of R&G Racing. All returns are subject to a 25% restocking and handling fee (25% of the gross value exc. P&P – at the prevailing price at time of purchase). The customer must pay any and all carriage charges. No returns of discontinued products, unless within 14 days of purchase. This policy does not affect your statutory rights and does not refer to faulty goods.