



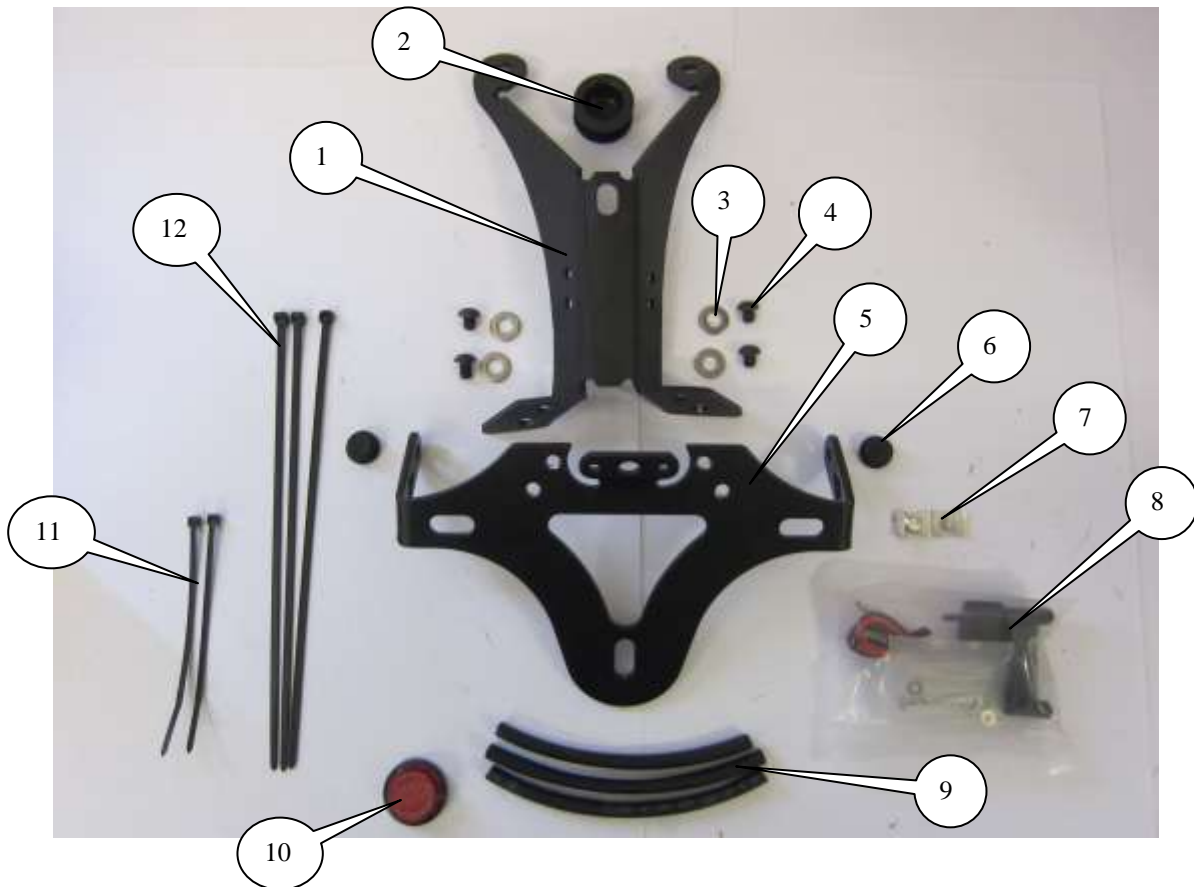
FITTING INSTRUCTIONS FOR LP0147BK LICENCE PLATE BRACKET
APRILIA CAPONORD 1200 2013



THIS KIT CONTAINS THE ITEMS PICTURED AND LABELLED BELOW.
DO NOT PROCEED UNTIL YOU ARE SURE ALL PARTS ARE PRESENT.

Please note that the way the kit is packed does not necessarily represent the way of mounting to the bike

THE PARTS SHOWN MAY BE REPRESENTATIVE ONLY (FOR CLARITY OF INSTRUCTIONS ONLY)





LEGEND

ITEM 1 = LICENCE PLATE MOUNTING BRACKET (TB0147 PT 1 BK) (x1).

ITEM 2 = RB0002 WIRING BLANKING GROMMET (x1).

ITEM 3 = M6 WASHERS (x4).

ITEM 4 = M6x6mm LONG BUTTON HEAD BOLTS (x4).

ITEM 5 = LICENCE PLATE BRACKET (TB0147 PT 2 BK) (x1).

ITEM 6 = RB80-30-00 INDICATOR BLANKING GROMMET (x2).

ITEM 7 = CABLE CLIPS (x2).

ITEM 8 = LICENCE PLATE ILLUMINATOR ASSEMBLY (LA0002) (x1)

ITEM 9 = 180mm LENGTHS OF HEAT SHRINK (x3).

ITEM 10 = REFLECTOR (REFL 1) (x1).

ITEM 11 = CABLE TIES 75mm LONG (x3).

ITEM 12 = CABLE TIES 220mm LONG (x2).

Page | 2

Please note that in cases where kits are packed with rubber washers holding the components onto the bolt – *the rubber washers should be thrown away!*

TOOLS REQUIRED

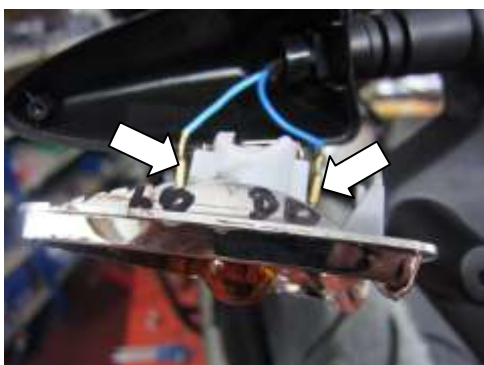
- Set of metric Allen keys to include 4,5 and 6mm A/F size.
- Socket set to include 10mm A/F socket and wrench.
 - 10mm spanner.
- Phillips driver (small and large).
- Electrical pliers/crimps.
- Small amount of super glue.



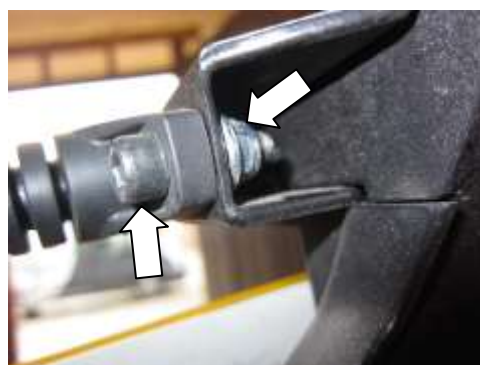
PICTURE 1



PICTURE 2



PICTURE 3



PICTURE 4



PICTURE 5



PICTURE 6



PICTURE 7



PICTURE 8



PICTURE 9



PICTURE 10



PICTURE 11



PICTURE 12



PICTURE 13



PICTURE 14



PICTURE 15



PICTURE 16

FITTING INSTRUCTIONS

- Remove the pillion seat using the key.
- Remove the plastic under-seat tray by removing the four bolts arrowed in picture 1.
- Remove the indicator lens screw arrowed in picture 2.
- Gently remove the indicator lens.
- Gently pull the bulb holder out and remove the two wiring clips as arrowed in picture 3.
- Remove the nut and bolt arrowed in picture 4.
- Remove the indicator and carefully feed the wires through the indicator stem.

R&G Racing

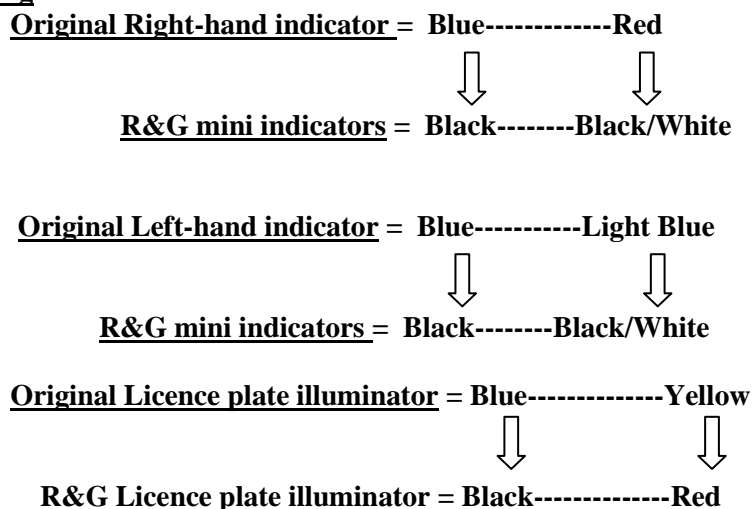
Unit 1, Shelley's Lane, East Worldham, Alton, Hampshire, GU34 3AQ

Tel: +44 (0)1420 89007 Fax: +44 (0)1420 87301 www.rg-racing.com Email: info@rg-racing.com



- Repeat the above directions for the other indicator.
- Remove the bolt arrowed in picture 5 and remove the licence plate illuminator cover.
- Gently remove the bulb and grommet from the cover.
- Peel the foam back and remove the two screws arrowed in picture 6.
- Remove the plastic grommet arrowed in picture 7.
- Remove the four screws arrowed in picture 8.
- Remove the three bolts arrowed in picture 9 (on the two front bolts you will need to hold the two nuts arrowed in picture 10).
- Gently remove the original licence plate bracket while feeding the licence plate illuminator and indicator wires through the licence plate bracket stem as shown in picture 11.
- Fit the new licence plate illuminator (item 8) to the licence plate bracket (item 5) as shown in picture 12 (please protect the wires using one of the lengths of heat shrink provided).
- **PLEASE NOTE YOU WILL NEED TO GLUE THE LIGHT SHROUD TO THE LED LICENCE PLATE ILLUMINATOR USING SUPER GLUE.**
- Please remove the excess threads from the licence plate illuminator studs.
- Fit the licence plate bracket (item 5) to the licence plate mounting bracket (item 1) using the four washers and bolts (items 3 and 4) as shown in picture 13(suggest using some thread lock or super glue on the threads).
- Fit the indicators of choice to the licence plate bracket assembly (R&G mini indicator product code RG370 for bulb type and RG371 for LED type, see wiring directions below) (small grommets are supplied to cover unused holes in the licence plate bracket).

Please note wiring



- Fit new licence plate light to new licence plate bracket and tighten. (note:- it will be necessary to cut the wires to the OEM license plate light in order to join them to the R&G light with the connectors supplied, see wiring directions above).
- Fit the supplied heat shrink supplied over wires.
- Fit the larger rubber grommet into the cable hole in the under-tray as shown in picture 15.
- Feed all wires through the newly fitted rubber grommet as shown in picture 15.
- Using the three original bolts (put bolts though from underneath as original) secure the new licence plate bracket as shown in picture 16.



- Reconnect all wiring and wiring plugs as original. Using wiring clips and cable ties from kit secure wires to new licence plate bracket as shown in picture 14.
- Fit licence plate to new licence plate bracket.
- **IMPORTANT: IF FITTING A FULL-SIZE LICENCE PLATE AND PLACING IT FAR DOWN ON THE LICENCE PLATE HANGER, THERE IS A SMALL CHANCE OF THE LICENCE PLATE HITTING THE BACK WHEEL UNDER HEAVY LOAD AND OVER LARGE BUMPS IN THE ROAD. IT IS YOUR RESPONSIBILITY TO CHECK FOR THIS POSSIBILITY AND TAKE AVOIDING ACTION. FAILURE TO CHECK THIS COULD RESULT IN SERIOUS INJURY.**
- Refit the under-seat tray as original.
- Refit pillion seat.
- Depending on local laws, attach enclosed red reflector (item 10) in an appropriate location.
- **Please test the indicators and licence plate illuminator before riding.**

ISSUE 1 10/06/2013 (NSY)

CONSUMER NOTICE

The catalogue description and any exhibition of samples are only broad indications of the Products and R&G may make design changes which do not diminish their performance or visual appeal and supplying them in such state shall conform to the order. The Buyer acknowledges no representation or warranty (other than as to title) has been given or will apply to the Products other than those in R&G's order or confirmation and the Buyer confirms it has chosen the Products as being of merchantable quality and suitable for its particular purposes. Where R&G fits the Products or undertakes other services it shall exercise reasonable skill and care and rectify any fault free of charge unless the workmanship has been disturbed. The Buyer is responsible for ensuring that the warranty on the motorcycle is not affected by the fitting of the Products. On return of any defective Products R&G shall at its option either supply a replacement or refund the purchase money but shall not be liable if the Products have been modified or used or maintained otherwise than in accordance with R&G's or manufacturer's instructions and good engineering practice or if the defect arises from accident or neglect. Other than identified above and subject to R&G not limiting its liability for causing death and personal injury, it shall not be liable for indirect or consequential loss and otherwise its liability shall be limited to the amounts paid by the Buyer for the Products or the fitting or service concerned. These terms do not affect the Buyer's statutory rights.

R&G RACING RETURNS POLICY (NON-FAULTY GOODS)

Returns must be pre-authorized (if not pre-authorized the return will be rejected). Goods may only be returned direct to us if they were purchased direct from us (customer must prove if necessary). Otherwise to be returned to original vendor. Goods must be in re-sellable condition, in the opinion of R&G Racing. All returns are subject to a 25% restocking and handling fee (25% of the gross value exc. P&P – at the prevailing price at time of purchase). The customer must pay any and all carriage charges. No returns of discontinued products, unless within 14 days of purchase. This policy does not affect your statutory rights and does not refer to faulty goods.

R&G Racing

Unit 1, Shelley's Lane, East Worldham, Alton, Hampshire, GU34 3AQ

Tel: +44 (0)1420 89007 Fax: +44 (0)1420 87301 www.rg-racing.com Email: info@rg-racing.com



Instructions de montage LP0147BK Support de plaque
APRILIA CAPONORD 1200 2013

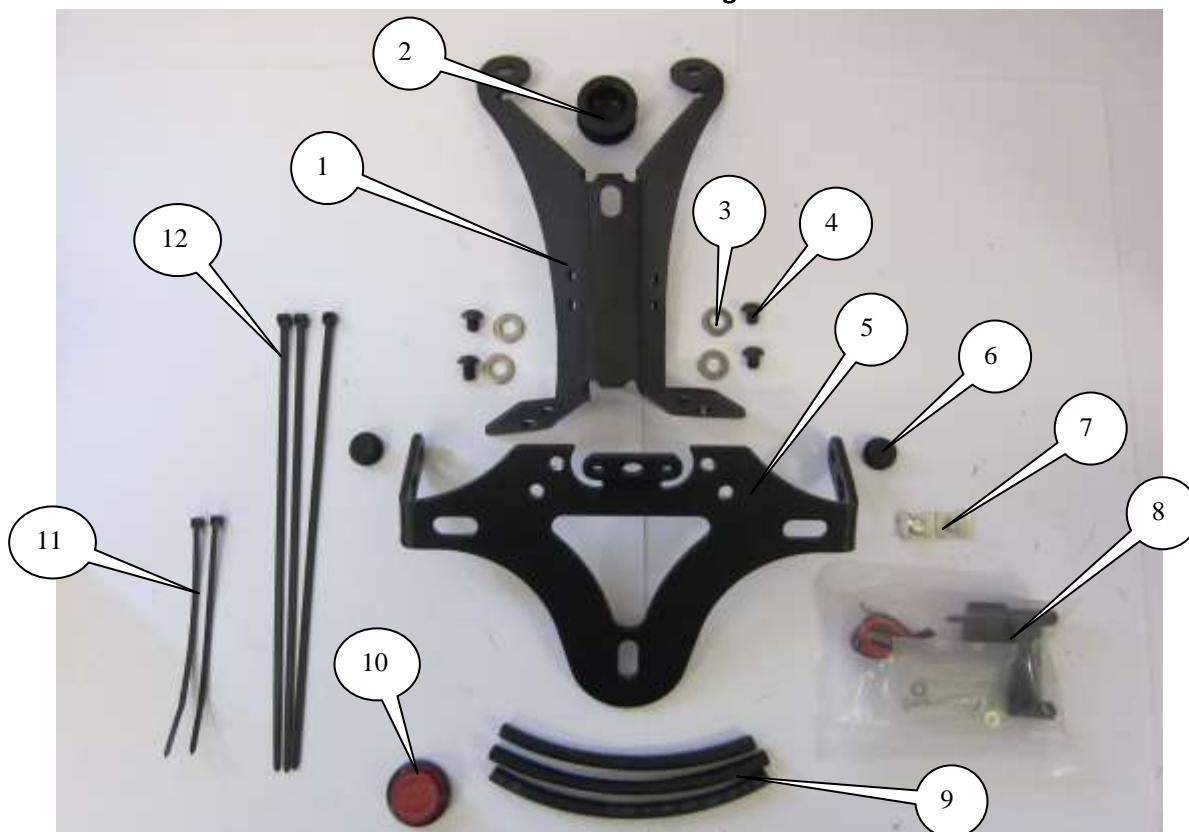
Page | 7



Le kit contient les articles exposés ci-dessous, vérifier que toutes les pièces soient présentes avant de procéder au montage.

La façon dont le kit est emballé ne correspond pas forcément à la façon de monter les pièces sur la moto.

Les pièces présentées peuvent n'être que représentatives, afin de faciliter et clarifier les instructions de montage.



R&G Racing

Unit 1, Shelley's Lane, East Worldham, Alton, Hampshire, GU34 3AQ

Tel: +44 (0)1420 89007 Fax: +44 (0)1420 87301 www.rg-racing.com Email: info@rg-racing.com



LEGENDE

- ARTICLE 1 = Support de plaque (TB0147 PT 1 BK) (x1).
ARTICLE 2 = RB0002 Rondelle d'obturation des fils (x1).
ARTICLE 3 = M6 Rondelles (x4).
ARTICLE 4 = M6x6mm Boulons (x4).
ARTICLE 5 = Support de plaque (TB0147 PT 2 BK) (x1).
ARTICLE 6 = RB80-30-00 Rondelle d'obturation des clignotants (x2).
ARTICLE 7 = Serre câble (x2).
ARTICLE 8 = Assemblage feu de plaque (LA0002) (x1)
ARTICLE 9 = 180mm Longueurs de thermorétractable (x3).
ARTICLE 10 = Réfléchissant (Réfléchissant 1) (x1).
ARTICLE 11 = Serre câble 75mm de long (x3).
ARTICLE 12 = Serre câble 220mm de long (x2).

Page | 8

NOTEZ QUE SI LES KITS SONT EMBALLES AVEC DES RONDELLES EN CAOUTCHOUC SERVANT A TENIR LES COMPOSANTS, CES RONDELLES DOIVENT ETRE JETEES.

Outils requis

- Jeu de clé Allen 4, 5 et 6mm.
 - Jeu de clé 10mm.
 - Pince 10mm.
- Tournevis cruciforme (petit et large).
 - Pinces électriques.
 - Une peu de suprglue.



PHOTO 1



PHOTO 2

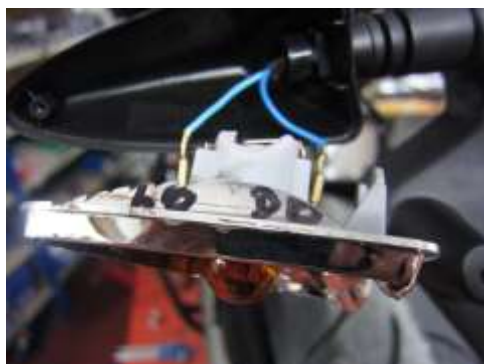


PHOTO 3



PHOTO 4



PHOTO 5



PHOTO 6



PHOTO 7



PHOTO 8



PHOTO 9



PHOTO 10



PHOTO 11



PHOTO 12



PHOTO 13



PHOTO 14



PHOTO 15



PHOTO 16

INSTRUCTIONS DE MONTAGE

- Enlever le siège passager avec une clé.
- Enlever le support plastique du dessous en enlevant les 4 boulons de la photo 1.
- Enlever la vis de l'objectif du clignotant fléché sur la Photo 2.
- Enlever délicatement la lentille du clignotant
- Tirez doucement sur la douille d'ampoule et enlever les deux clips de câblage comme fléchées sur la Photo 3.

R&G Racing

Unit 1, Shelley's Lane, East Worldham, Alton, Hampshire, GU34 3AQ

Tel: +44 (0)1420 89007 Fax: +44 (0)1420 87301 www.rg-racing.com Email: info@rg-racing.com



- Enlever l'écrou et le boulon (Photo 4).
- Enlever le clignotant et passer les fils à travers la tige de clignotant.
- Répéter les indications du dessus pour l'autre clignotant.
- Enlever le boulon fléché sur la photo 5 and enlever la protection de feu de plaque.
- Enlever l'ampoule et l'œillet de la protection.
- Eplucher la mousse et enlever les 2 vis de la Photo 6.
- Enlever l'œillet en plastique (Photo 7).
- Enlever les 4 vis (Photo 8).
- Enlever les 3 boulons (Photo 9) (sur les 2 boulons avant vous devrez tenir les 2 écrous de la photo 10).
- Enlever le support de plaque d'origine tout en passant le feu de plaque et les fils de clignotants à travers la tige de support de plaque (Photo 11).
- Poser le nouveau feu de plaque (Article 8) au support de plaque (Article 5) (Photo 12) (protégez les fils à l'aide d'une des longueurs thermo rétractables).
- **VOUS AUREZ BESOIN DE GLUE POUR FIXER LE LINCEUL DE LUMIERE AU FEU DE PLAQUE A LED.**
- Enlever les fils excédentaires des montants de feu de plaque.
- Poser le support de plaque (Article 5) sur le support de fixation (Article 1) en utilisant les 4 rondelles et boulons (Articles 3 and 4) (Photo 13) (nous vous suggérons d'utiliser du frein filet ou de la super glue sur les fils).
- Monter les clignotants de votre choix sur le support de plaque (R&G mini clignotants code RG370 pour type ampoule et RG371 pour type LED, les directions des fils sont indiquées ci dessous) (des petits oeillets sont fournis pour protéger les trous inutilisés sur le support de plaque).

NOTE sur les directions :

Clignotants d'origine coté droit = Bleu-----Rouge



Mini clignotants R&G = Noir-----Noir/Blanc

Clignotants d'origine coté gauche = Bleu-----Bleu clair



Mini clignotants R&G = Noir-----Noir/Blanc

Feux de plaque d'origine = Bleu-----Jaune



Feux de plaque R&G= Noir-----Rouge

- Poser le nouveau feu de plaque au nouveau support de plaque et serrer. (note:- Vous devrez couper les fils au feu de plaque d'origine afin de les joindre au feu R&G avec les connecteurs fournis, les directions étant indiquées ci dessus).
- Appliquer la thermo rétractable fournie autour des fils.

R&G Racing

Unit 1, Shelley's Lane, East Worldham, Alton, Hampshire, GU34 3AQ

Tel: +44 (0)1420 89007 Fax: +44 (0)1420 87301 www.rg-racing.com Email: info@rg-racing.com



- Poser l'œillet le plus large dans le trou de câble dans le passage de roue (Photo 15).
- Passer tous les fils à travers le tout nouvel œillet (Photo 15).
- En utilisant les 3 boulons d'origine (mettre les boulons à travers depuis le passage de roue comme à l'origine) fixer le nouveau support de plaque (Photo 16).
- Reconnecter tous les fils et les prises de fils comme à l'origine. En utilisant les clips de fils et les serre câble du kit, fixer les fils au nouveau support de plaque (Photo 14).
- Fixer votre plaque d'immatriculation au nouveau support de plaque.
- **IMPORTANT: Si vous installez une grosse plaque, il y a un risque que la plaque entre en contact avec la roue arrière en cas de choc sur la route (bosse, grosse charge etc...). Il est de votre responsabilité de vérifier que cela ne puisse pas se produire. Ne pas effectuer ces vérifications peut entraîner des dommages ainsi que des blessures graves pour le pilote.**
- Remettre en place le passage de roue sous le siège comme à l'origine.
- Remonter le siège passager
- Selon la loi locale, monter les réflecteurs (article 10) aux emplacements appropriés.
- Revérifiez que les clignotants et les feux de plaque fonctionnent bien avant de prendre la route.

ISSUE 1 10/06/2013 (NSY)

CONSUMER NOTICE

The catalogue description and any exhibition of samples are only broad indications of the Products and R&G may make design changes which do not diminish their performance or visual appeal and supplying them in such state shall conform to the order. The Buyer acknowledges no representation or warranty (other than as to title) has been given or will apply to the Products other than those in R&G's order or confirmation and the Buyer confirms it has chosen the Products as being of merchantable quality and suitable for its particular purposes. Where R&G fits the Products or undertakes other services it shall exercise reasonable skill and care and rectify any fault free of charge unless the workmanship has been disturbed. The Buyer is responsible for ensuring that the warranty on the motorcycle is not affected by the fitting of the Products. On return of any defective Products R&G shall at its option either supply a replacement or refund the purchase money but shall not be liable if the Products have been modified or used or maintained otherwise than in accordance with R&G's or manufacturer's instructions and good engineering practice or if the defect arises from accident or neglect. Other than identified above and subject to R&G not limiting its liability for causing death and personal injury, it shall not be liable for indirect or consequential loss and otherwise its liability shall be limited to the amounts paid by the Buyer for the Products or the fitting or service concerned. These terms do not affect the Buyer's statutory rights.

R&G RACING RETURNS POLICY (NON-FAULTY GOODS)

Returns must be pre-authorized (if not pre-authorized the return will be rejected). Goods may only be returned direct to us if they were purchased direct from us (customer must prove if necessary). Otherwise to be returned to original vendor. Goods must be in re-sellable condition, in the opinion of R&G Racing. All returns are subject to a 25% restocking and handling fee (25% of the gross value exc. P&P – at the prevailing price at time of purchase). The customer must pay any and all carriage charges. No returns of discontinued products, unless within 14 days of purchase. This policy does not affect your statutory rights and does not refer to faulty goods.

R&G Racing

Unit 1, Shelley's Lane, East Worldham, Alton, Hampshire, GU34 3AQ

Tel: +44 (0)1420 89007 Fax: +44 (0)1420 87301 www.rg-racing.com Email: info@rg-racing.com