



FITTING INSTRUCTIONS FOR AB0014BK ADVENTURE BARS
KAWASAKI KLR 650 2002-2013

1



PICTURE A



PICTURE B

THIS KIT CONTAINS THE ITEMS PICTURED AND LABELLED BELOW.
DO NOT PROCEED UNTIL YOU ARE SURE ALL PARTS ARE PRESENT.

Please note that the way the kit is packed does not necessarily represent the way of mounting to the bike

THE PARTS SHOWN MAY BE REPRESENTATIVE ONLY (FOR CLARITY OF INSTRUCTIONS ONLY)

Digital copies of these instructions are available to download from www.rg-racing.com

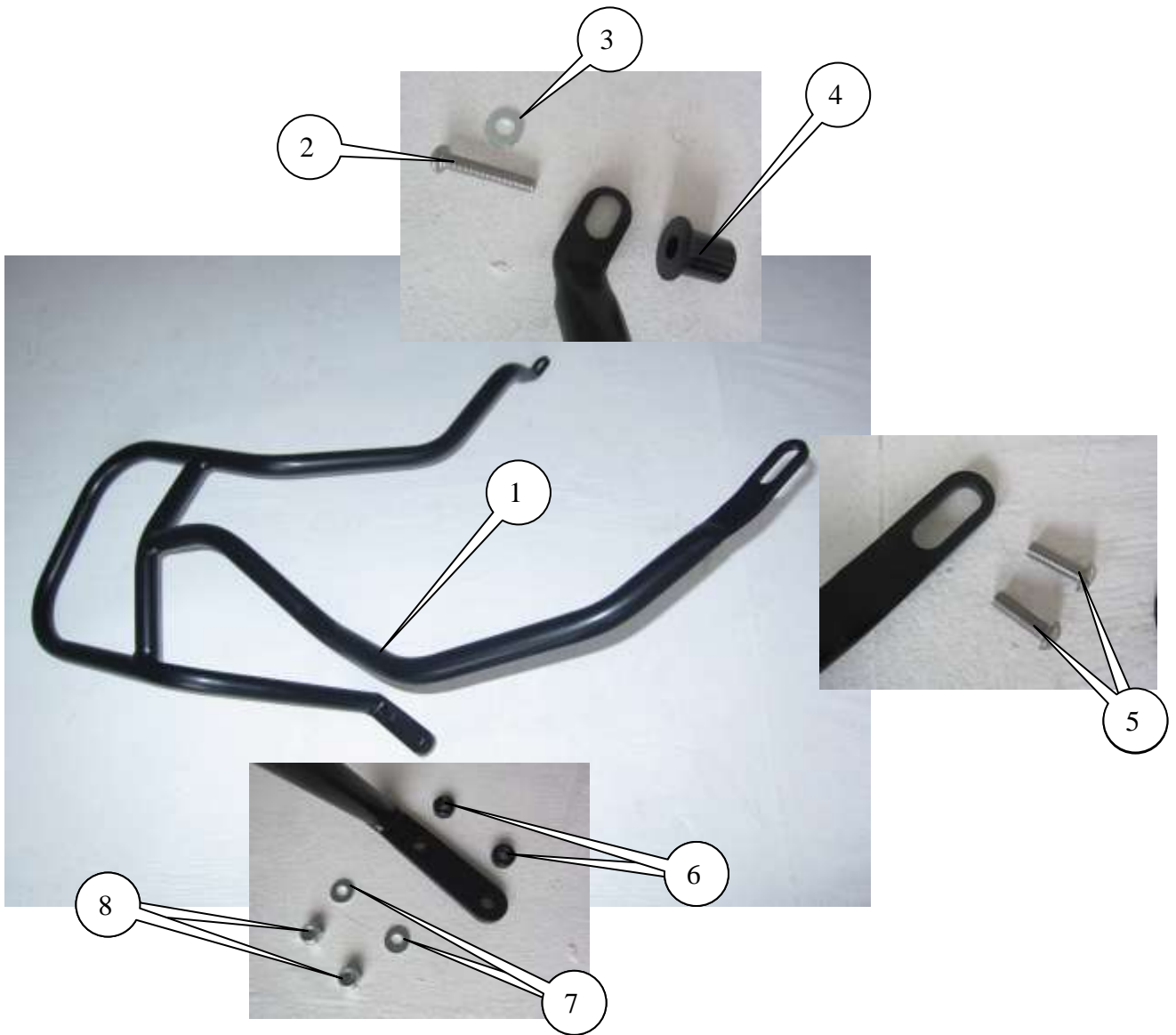
GENERAL TORQUE SETTINGS

M4 BOLT = 8Nm
M5 BOLT = 12Nm
M6 BOLT = 15Nm
M8 BOLT = 20Nm
M10 BOLT = 40Nm



2

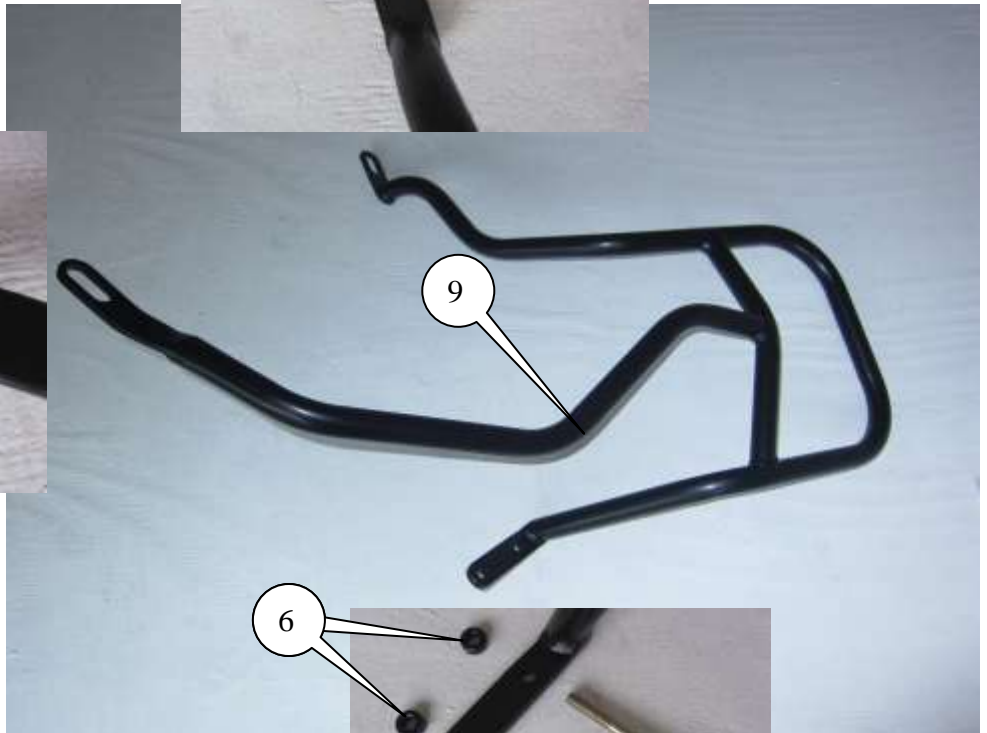
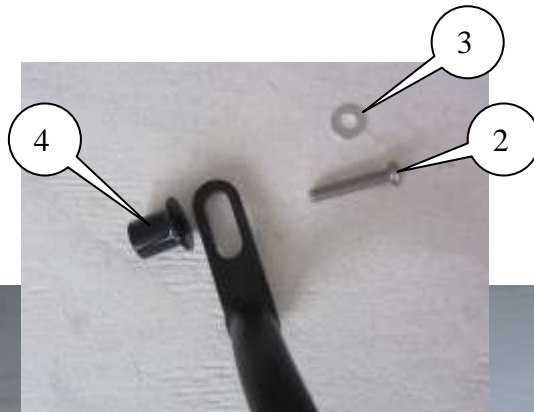
LEFT HAND SIDE



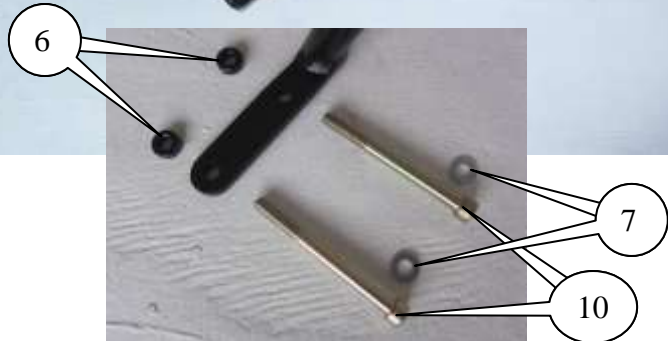


RIGHT HAND SIDE

3



5





LEGEND

- ITEM 1 = ADVENTURE BAR LEFT-HAND SIDE (CB037) (x1).
ITEM 2 = M10 x 1.25 x 60mm LONG BUTTON HEAD BOLT (R&LHS TOP) (x2).
ITEM 3 = M10 WASHERS (x2).
ITEM 4 = SPACERS (S0148=R&LHS TOP) (x2).
ITEM 5 = M8 x 1.25 x 25mm LONG BUTTON HEAD BOLT (R&LHS BOTTOM) (x4).
ITEM 6 = SPACERS (S0299=R&LHS BOTTOM) (x4).
ITEM 7 = M8 WASHERS (x4).
ITEM 8 = M8 x 1.25 NYLOC NUTS (FRONT BOTTOM) (x2).
ITEM 9 = ADVENTURE BAR RIGHT-HAND SIDE (CB038) (x1).
ITEM 10 = M8 x 1.25 x 100mm LONG CAP HEAD BOLT (FRONT BOTTOM) (x2).

TOOLS REQUIRED

- Socket set to include a 8, 10, 12 & 13mm sockets and wrench.
 - Allen keys to include 5, 6 and 8mm A/F.
 - Phillips driver.
 - Torque wrench (up to 40Nm).



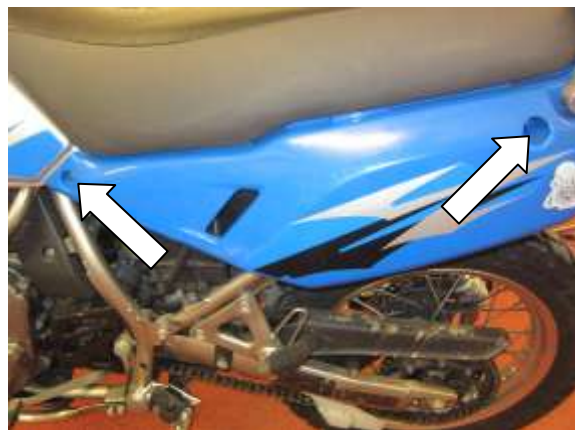
Picture 1



Picture 2



Picture 3



Picture 4

R&G Racing

Unit 1, Shelley's Lane, East Worldham, Alton, Hampshire, GU34 3AQ

Tel: +44 (0)1420 89007 Fax: +44 (0)1420 87301 www.rg-racing.com Email: info@rg-racing.com



5



Picture 5



Picture 6



Picture 7



Picture 8



Picture 9



Picture 10



6



Picture 11



Picture 12



Picture 13



Picture 14



Picture 15



Picture 16



7



Picture 17



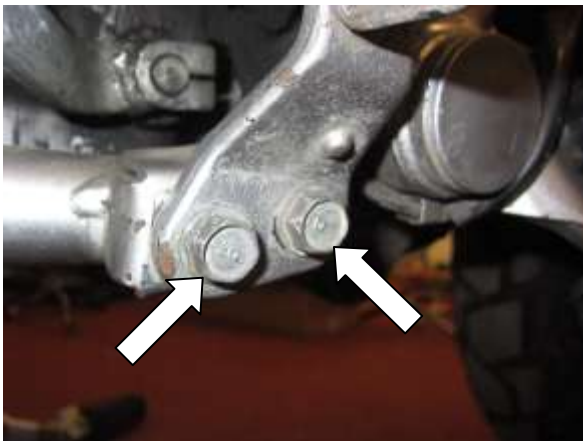
Picture 18



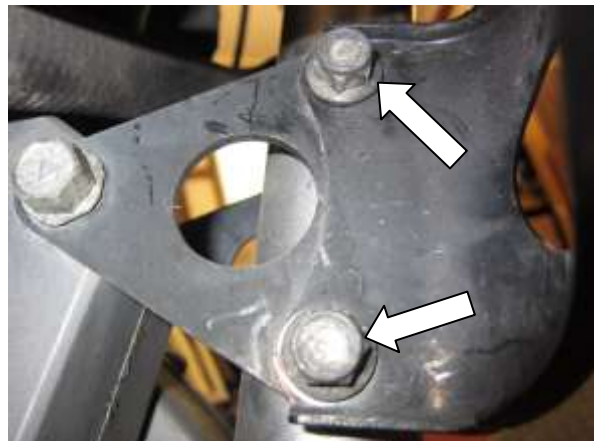
Picture 19



Picture 20



Picture 21



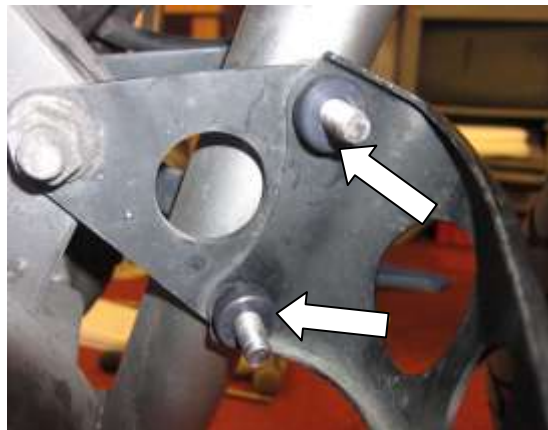
Picture 22



8



Picture 23



Picture 24



Picture 25



Picture 26



Picture 27



Picture 28



Picture 29



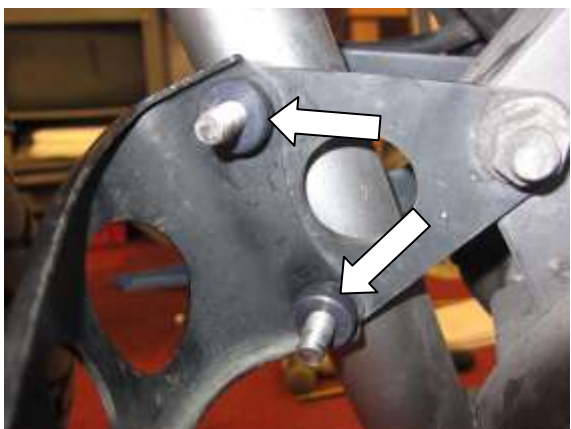
Picture 30



Picture 31



Picture 32



Picture 33



Picture 34



Picture 35



Picture 36



Picture 37



Picture 38

FITTING INSTRUCTIONS

- Remove the two bolts arrowed in pictures 1 and 2 and remove the right hand side side panel.
- Remove the bolt arrowed in picture 3.
- Remove the two bolts arrowed in pictures 4 and remove the left hand side side panel.
- Remove the bolt arrowed in picture 5 and remove the seat.
- Remove the two bolts arrowed in picture 6.
- Remove the bolts arrowed in pictures 7, 8, 9 and 10 and remove the left hand side front fairing.
- Remove the bolts arrowed in pictures 11, 12, 13 and 14 and remove the right hand side front fairing.
- Gently lift the petrol tank and support with chocks of wood as shown in picture 15 to allow access to the bolts shown in pictures 23 and 29.
- Remove the bolts arrowed in pictures 16, 17, 18 and 19 and remove the bash plate.



- Remove the two bolts arrowed in picture 20 and remove the foot peg.
- Remove the two bolts arrowed in picture 21 and remove the foot peg.
- Remove the two nuts arrowed in picture 22 (do not remove the bolts at this stage).
- Remove the bolt arrowed in picture 23 on the right hand side.
- Place two of the smaller spacers (item 6) over the original bolts as arrowed in picture 24.
- Place one of the larger spacers (item 4) into the frame recess as arrowed in picture 25.
- Offer the right hand side adventure bar (item 9) into position shown in picture B.
- Place one of the M10 washers (item 3) onto one of the M10 button headed bolts (item 2) and place into the top slot of the adventure bar as shown in picture 25 (do not tighten at this stage).
- Ensure the front mounting plate is positioned onto the original bolts as shown in picture 27.
- Place two of the M8 washers (item 7) onto the two longer cap head bolts (item 10) and use them to push out the original front mounting bolts.
- Ensure the lower mounting bracket is aligned as shown in picture 26.
- Place two of the shorter M8 bolts (item 5) through the original foot pegs and through the lower mounting bracket as shown in picture 28 and tighten the upper and lower bolts.
- Remove the bolt arrowed in picture 29 on the left hand side.
- Place two of the smaller spacers (item 6) over the new bolts as arrowed in picture 33.
- Place one of the larger spacers (item 4) into the frame recess as arrowed in picture 30.
- Offer the left hand side adventure bar (item 1) into position shown in picture A.
- Place one of the M10 washers (item 3) onto one of the M10 button headed bolts (item 2) and place into the top slot of the adventure bar as shown in picture 30 (do not tighten at this stage).
- Ensure the front mounting plate is positioned onto the new bolts as shown in picture 32.
- Place two of the M8 washers (item 7) and M8 Nyloc nuts (item 8) onto the new bolts fitted from the right hand side and tighten.
- Ensure the lower mounting bracket is aligned as shown in picture 31.
- Place two of the shorter M8 bolts (item 5) through the original foot pegs and through the lower mounting bracket as shown in picture 34 and tighten the upper and lower bolts.
- Tighten the two front mounting bracket nuts.
- Gently lower the petrol tank and refit and tighten the two bolts as arrowed in picture 6.
- Cover both adventure bars with towels/cloths to prevent marking of the side panels when refitting as shown in pictures 35, 36, 37 and 38.
- Carefully refit both side panels as original.
- Carefully refit the bash plate as original.

ISSUE 1 26/03/2014 (NSY)

CONSUMER NOTICE

The catalogue description and any exhibition of samples are only broad indications of the Products and R&G may make design changes which do not diminish their performance or visual appeal and supplying them in such state shall conform to the order. The Buyer acknowledges no representation or warranty (other than as to title) has been given or will apply to the Products other than those in R&G's order or confirmation and the Buyer confirms it has chosen the Products as being of merchantable quality and suitable for its particular purposes. Where R&G fits the Products or undertakes other services it shall exercise reasonable skill and care and rectify any fault free of charge unless the workmanship has been disturbed. The Buyer is responsible for ensuring that the warranty on the motorcycle is not affected by the fitting of the Products. On return of any defective Products R&G shall at its option either supply a replacement or refund the purchase money but shall not be liable if the Products have been modified or used or maintained otherwise than in accordance with R&G's or manufacturer's instructions and good engineering practice or if the defect arises from accident or neglect. Other than identified above and subject to R&G not limiting its liability for causing death and personal injury, it shall not be liable for indirect or consequential loss and otherwise its liability shall be limited to the amounts paid by the Buyer for the Products or the fitting or service concerned. These terms do not affect the Buyer's statutory rights.

R&G Racing

Unit 1, Shelley's Lane, East Worldham, Alton, Hampshire, GU34 3AQ

Tel: +44 (0)1420 89007 Fax: +44 (0)1420 87301 www.rg-racing.com Email: info@rg-racing.com



R&G RACING RETURNS POLICY (NON-FAULTY GOODS)

Returns must be pre-authorized (if not pre-authorized the return will be rejected). Goods may only be returned direct to us if they were purchased direct from us (customer must prove if necessary). Otherwise to be returned to original vendor. Goods must be in re-sellable condition, in the opinion of R&G Racing. All returns are subject to a 25% restocking and handling fee (25% of the gross value exc. P&P – at the prevailing price at time of purchase). The customer must pay any and all carriage charges. No returns of discontinued products, unless within 14 days of purchase. This policy does not affect your statutory rights and does not refer to faulty goods.



**INSTRUCTIONS DE MONTAGE POUR AB0014BK BARRES AVENTURE
KAWASAKI KLR 650 2002-2013**

13



PHOTO A



PHOTO B

LE KIT CONTIENT LES ARTICLES EXPOSES CI-DESSOUS, VERIFIER QUE TOUTES LES PIECES SOIENT PRESENTES AVANT DE PROCEDER AU MONTAGE.

Ces instructions de montage sont disponibles sur www.rg-racing.com

**LA FAÇON DONT LE KIT EST EMBALLÉ NE CORRESPOND PAS FORCÉMENT À LA
FAÇON DE MONTER LES PIÈCES SUR LA MOTO.**

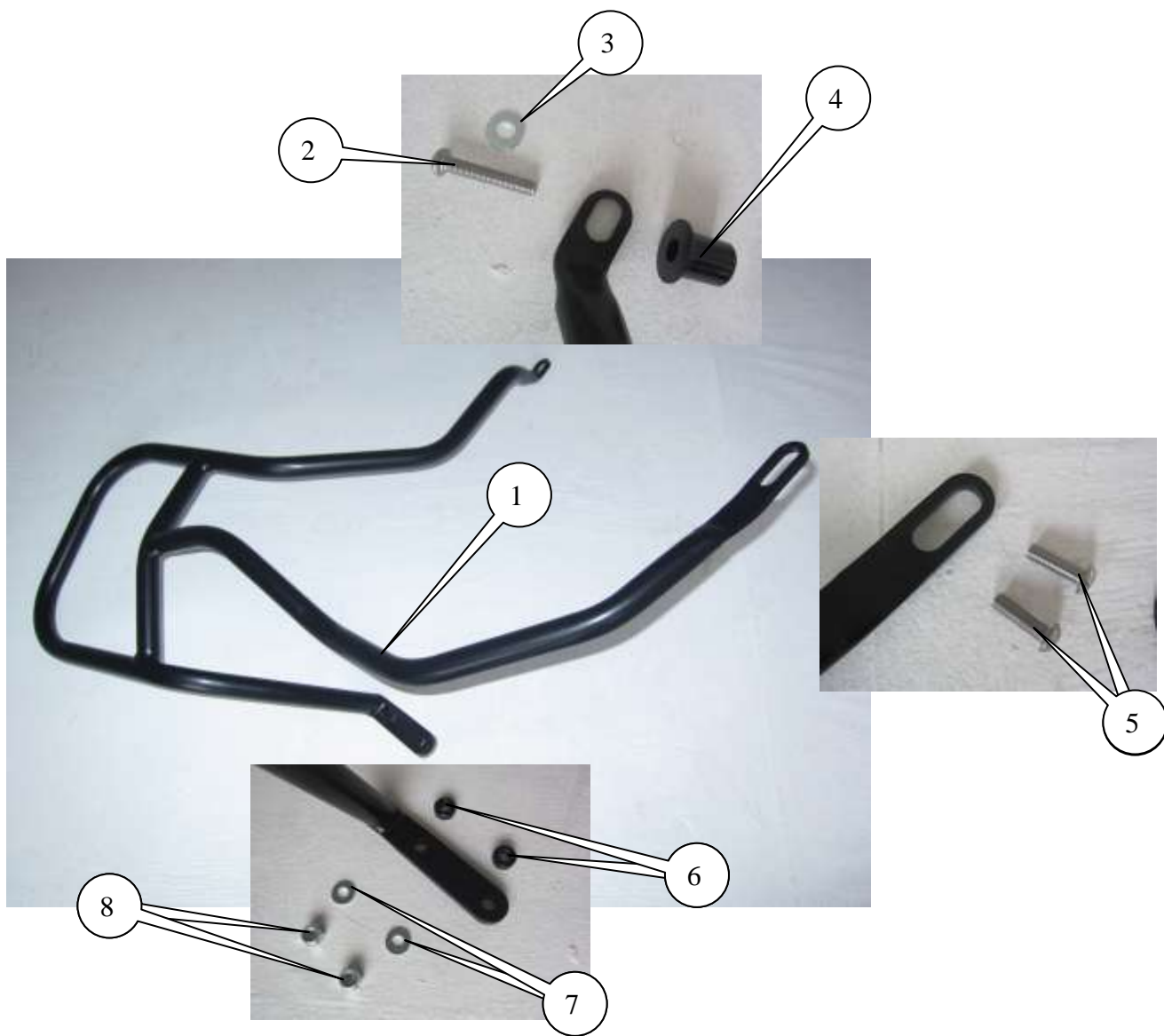
LES PARTIES PRESENTEES PEUVENT ETRE UNIQUEMENT REPRESENTATIVES (POUR LA CLARTE DES INSTRUCTIONS UNIQUEMENT)

COUPLES DE SERRAGE GENERAUX

M4 BOULON = 8Nm
M5 BOULON = 12Nm
M6 BOULON = 15Nm
M8 BOULON = 20Nm
M10 BOULON = 40Nm

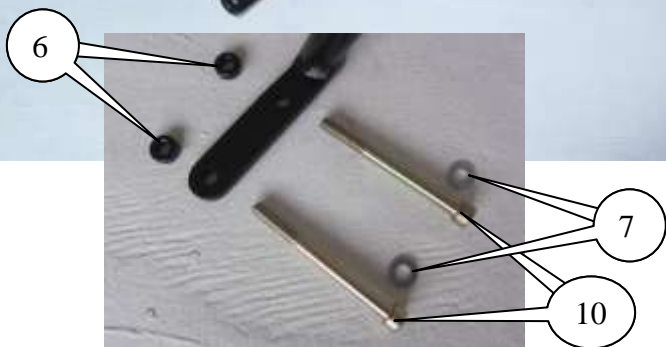
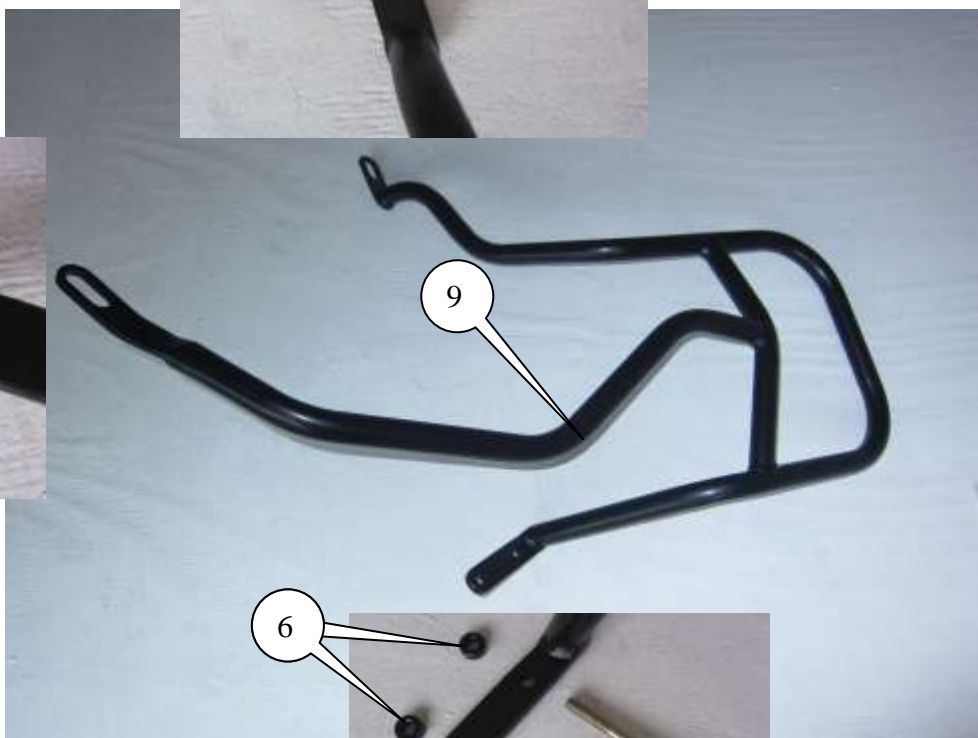
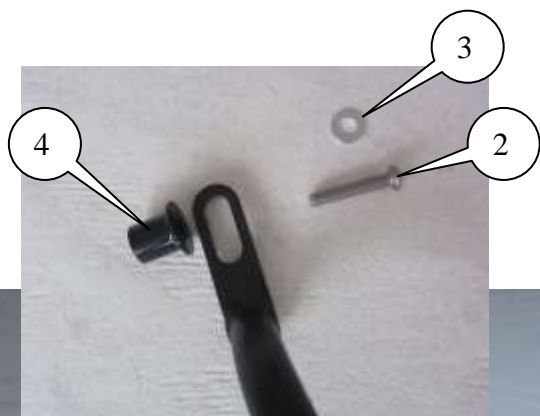


COTÉ GAUCHE





COTÉ DROIT



**LEGENDE**

- ARTICLE 1 = BARRE AVENTURE COTE GAUCHE (CB037) (x1).
ARTICLE 2 = M10 x 1.25 x 60mm BOULON (HAUT DROITE ET GAUCHE) (x2).
ARTICLE 3 = M10 RONDELLES (x2).
ARTICLE 4 = ENTRETOISES (S0148= HAUT DROITE ET GAUCHE) (x2).
ARTICLE 5 = M8 x 1.25 x 25mm BOULON (BAS DROITE ET GAUCHE) (x4).
ARTICLE 6 = ENTRETOISES (S0299= BAS DROITE ET GAUCHE) (x4).
ARTICLE 7 = M8 RONDELLES (x4).
ARTICLE 8 = M8 x 1.25 ECROUS (BAS AVANT) (x2).
ARTICLE 9 = BARRE AVENTURE COTE DROIT (CB038) (x1).
ARTICLE 10 = M8 x 1.25 x 100mm BOULON (BAS AVANT) (x2).

OUTILS REQUIS

- Clés à douille 8, 10, 12 & 13mm.
 - Clés Allen 5, 6 et 8m.
 - Tournevis cruciforme.
- Clé dynamométrique (à 40Nm).



Photo 1



Photo 2



17



Photo 3

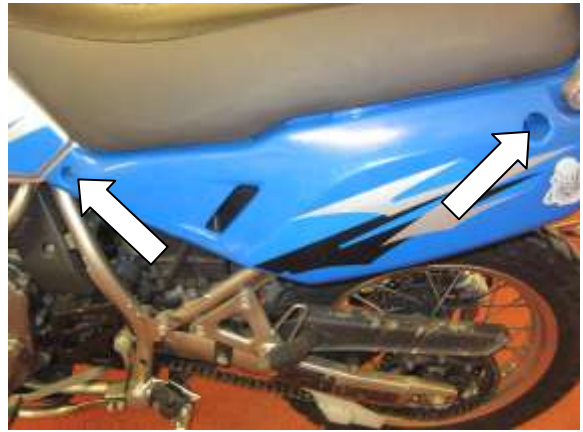


Photo 4



Photo 5



Photo 6



Photo 7



Photo 8



Photo 9



Photo 10



Photo 11



Photo 12



Photo 13



Photo 14



Photo 15

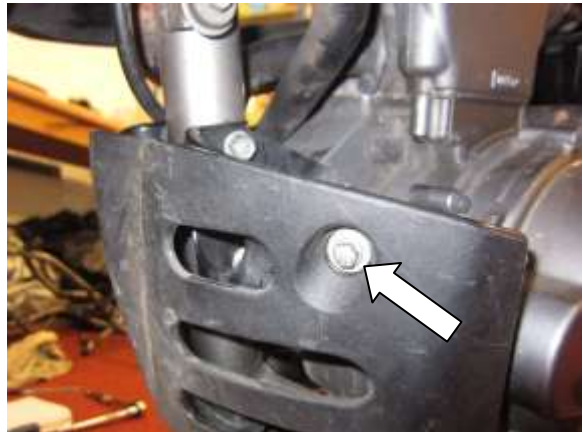


Photo 16



Photo 17



Photo 18



Photo 19



Photo 20

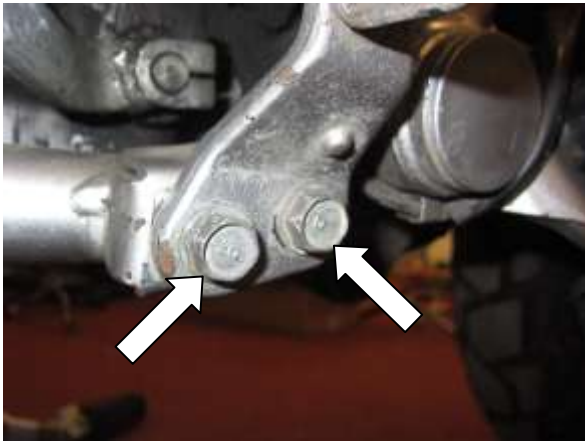


Photo 21

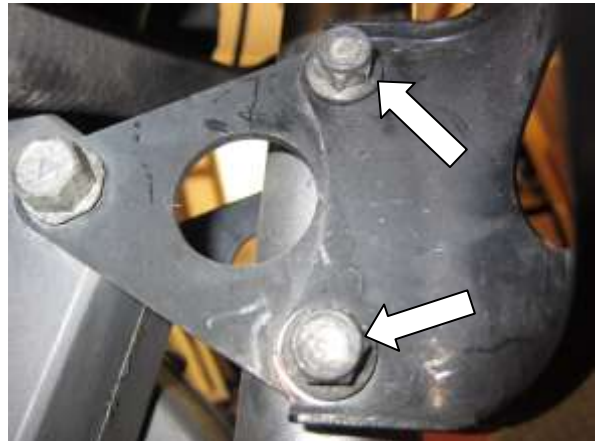


Photo 22



Photo 23



Photo 24



Photo 25



Photo 26



Photo 27



Photo 28



Photo 29



Photo 30



Photo 31



Photo 32

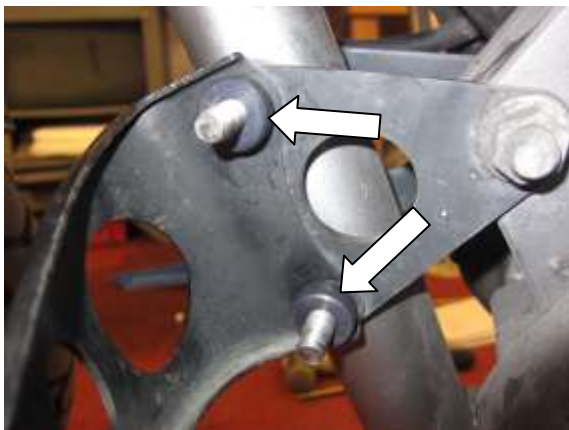


Photo 33

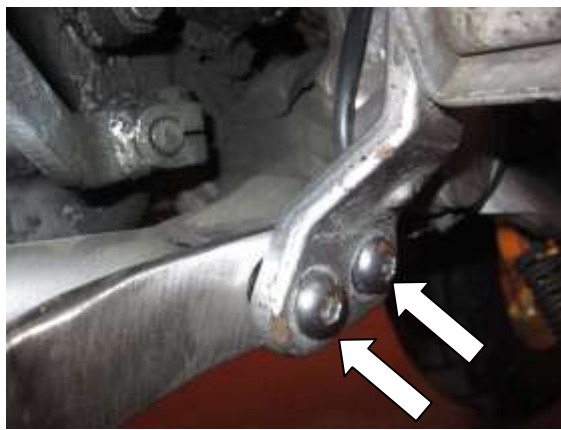


Photo 34



Photo 35



Photo 36



Photo 37



Photo 38



INSTRUCTIONS DE MONTAGE:

- Enlever les 2 boulons fléchés sur les photos 1 et 2 puis le cache latéral coté droit.
- Enlever le boulon fléché sur la photo 3.
- Enlever les 2 boulons fléchés sur la photo 4 puis le cache latéral coté gauche.
- Enlever le boulon fléché sur la photo 5 et enlever le siège.
- Enlever les 2 boulons fléchés sur la photo 6.
- Enlever les boulons fléchés sur les photos 7, 8, 9 et 10 puis enlever le carénage avant coté gauche.
- Enlever les boulons fléchés sur les photos 11, 12, 13 et 14 puis enlever le carénage avant coté droit.
- Déplacer doucement le réservoir et supportez-le avec des cales de bois (photo 15) pour pouvoir accéder aux boulons (photos 23 et 29).
- Enlever les boulons fléchés sur les photos 16, 17, 18 et 19 puis enlever la plaque anti éclaboussures.
- Enlever les 2 boulons fléchés sur la photo 20 et enlever le repose pied.
- Enlever les 2 boulons fléchés sur la photo 21 et le repose pied.
- Enlever les 2 écrous fléchés sur la photo 22 (ne pas enlever les boulons à ce stade).
- Enlever les boulons fléchés sur la photo 23 du coté droit.
- Placer 2 des petites entretoises (article 6) autour des boulons d'origine comme fléchés sur la photo 24.
- Placer une des entretoises épaisses (article 4) dans le creux du cadre comme fléché sur la photo 25.
- Poser la Barre Aventure du coté droit (article 9) en position (photo B).
- Placer une des rondelles M10 (article 3) sur une des boulons M10 (article 2) et placez le dans la fente supérieure de la Barre Aventure (photo 25) (Ne pas serrer à ce stade).
- Veiller à ce que la plaque de fixation avant soit positionnée sur les boulons d'origine comme sur la photo 27.
- Placer 2 des rondelles M8 (article 7) sur les 2 boulons (article 10) et utilisez les pour extraire les boulons d'origine avants.
- Veiller à ce que le support de fixation inférieur soit aligné (photo 26).
- Placer 2 des boulons courts M8 (article 5) à travers les repose pied d'origine et à travers le support de fixation inférieur (photo 28). Serrer les boulons supérieurs et inférieurs.
- Enlever le boulon fléché sur la photo 29 du coté gauche.
- Placer 2 des petites entretoises (article 6) autour des nouveaux boulons (photo 33).
- Placer une des entretoises épaisses (article 4) dans le creux du cadre comme fléché sur la photo 30.
- Placer la Barre Aventure du coté gauche (article 1) en position (photo A).



- Placer une des rondelles M10 (article 3) sur un des boulons M10 (article 2) puis placez le dans la fente supérieure de la Barre Aventure (photo 30) (Ne pas serrer à ce stade).
- Veiller à ce que la plaque de fixation avant soit positionnée sur les nouveaux boulons (photo 32).
- Placer 2 des rondelles M8 (article 7) et des écrous M8 (article 8) sur les nouveaux boulons insérés depuis le coté droit puis serrer.
- Veiller à ce que le support de fixation inférieur soit aligné comme sur la photo 31.
- Placer 2 des boulons courts M8 (article 5) à travers les repose pied d'origine puis à travers le support de fixation inférieur (photo 34). Serrer les boulons supérieurs et inférieurs.
- Serrer les 2 écrous du support de fixation avant.
- Abaisser doucement le réservoir d'essence et remettre puis serrer les 2 boulons comme fléché sur la photo 6.
- Couvrir les deux barres d'aventure avec des serviettes / draps pour empêcher le marquage des carénages latéraux lorsque vous les remettez (photos 35, 36, 37 et 38).
- Remettez les 2 carénages latéraux comme à l'origine.
- Remettre la plaque anti éclaboussure comme à l'origine.

ISSUE 1 26/03/2014 (NSY)

CONSUMER NOTICE

The catalogue description and any exhibition of samples are only broad indications of the Products and R&G may make design changes which do not diminish their performance or visual appeal and supplying them in such state shall conform to the order. The Buyer acknowledges no representation or warranty (other than as to title) has been given or will apply to the Products other than those in R&G's order or confirmation and the Buyer confirms it has chosen the Products as being of merchantable quality and suitable for its particular purposes. Where R&G fits the Products or undertakes other services it shall exercise reasonable skill and care and rectify any fault free of charge unless the workmanship has been disturbed. The Buyer is responsible for ensuring that the warranty on the motorcycle is not affected by the fitting of the Products. On return of any defective Products R&G shall at its option either supply a replacement or refund the purchase money but shall not be liable if the Products have been modified or used or maintained otherwise than in accordance with R&G's or manufacturer's instructions and good engineering practice or if the defect arises from accident or neglect. Other than identified above and subject to R&G not limiting its liability for causing death and personal injury, it shall not be liable for indirect or consequential loss and otherwise its liability shall be limited to the amounts paid by the Buyer for the Products or the fitting or service concerned. These terms do not affect the Buyer's statutory rights.

R&G RACING RETURNS POLICY (NON-FAULTY GOODS)

Returns must be pre-authorized (if not pre-authorized the return will be rejected). Goods may only be returned direct to us if they were purchased direct from us (customer must prove if necessary). Otherwise to be returned to original vendor. Goods must be in re-sellable condition, in the opinion of R&G Racing. All returns are subject to a 25% restocking and handling fee (25% of the gross value exc. P&P – at the prevailing price at time of purchase). The customer must pay any and all carriage charges. No returns of discontinued products, unless within 14 days of purchase. This policy does not affect your statutory rights and does not refer to faulty goods.

R&G Racing

Unit 1, Shelley's Lane, East Worldham, Alton, Hampshire, GU34 3AQ

Tel: +44 (0)1420 89007 Fax: +44 (0)1420 87301 www.rg-racing.com Email: info@rg-racing.com



**MONTAGEANLEITUNG FÜR AB0014BK ADVENTURE STURZBÜGEL
KAWASAKI KLR 650 2002-2013**

25



ABBILDUNG A



ABBILDUNG B

**ALLE TEILE SIND UNTEN ABGEBILDET UND GEKENNZEICHNET. BEVOR SIE
MIT DER MONTAGE BEGINNEN, ÜBERPRÜFEN SIE, DASS ALLE TEILE
VORHANDEN SIND.**

Hinweis: Die Verpackung der Teile stellt nicht die Reihenfolge der Montage dar.

DIE UNTEN ABGEBILDETEN TEILE DIENEN LEDIGLICH ZUR ERKLÄRUNG.

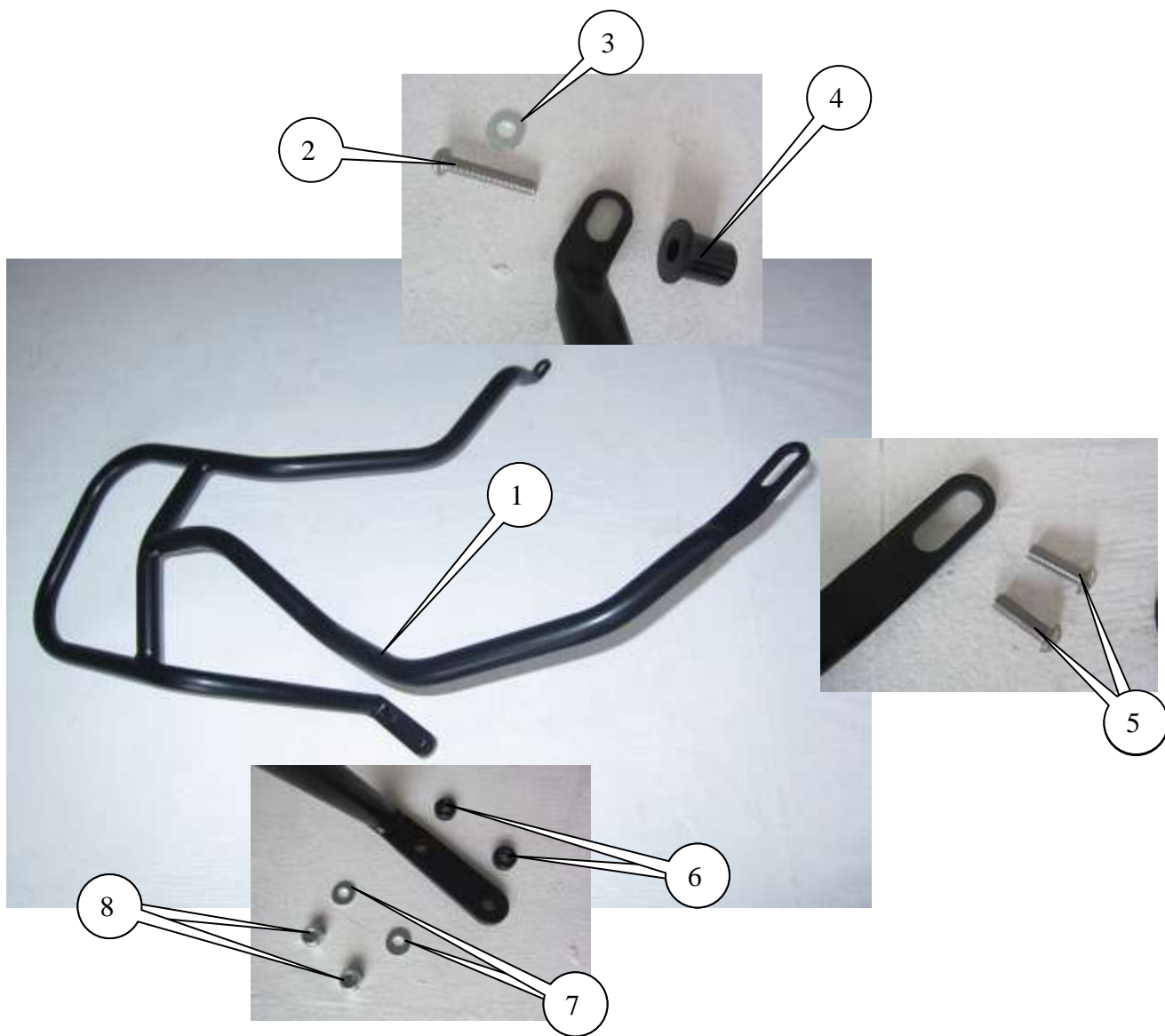
Eine digitale Version dieser Montageanleitung kann auf folgender Seite heruntergeladen werden: www.rg-racing.com

ANZUGSDREHMOMENTE:

M4 SCHRAUBE = 8Nm
M5 SCHRAUBE = 12Nm
M6 SCHRAUBE = 15Nm
M8 SCHRAUBE = 20Nm
M10 SCHRAUBE = 40Nm



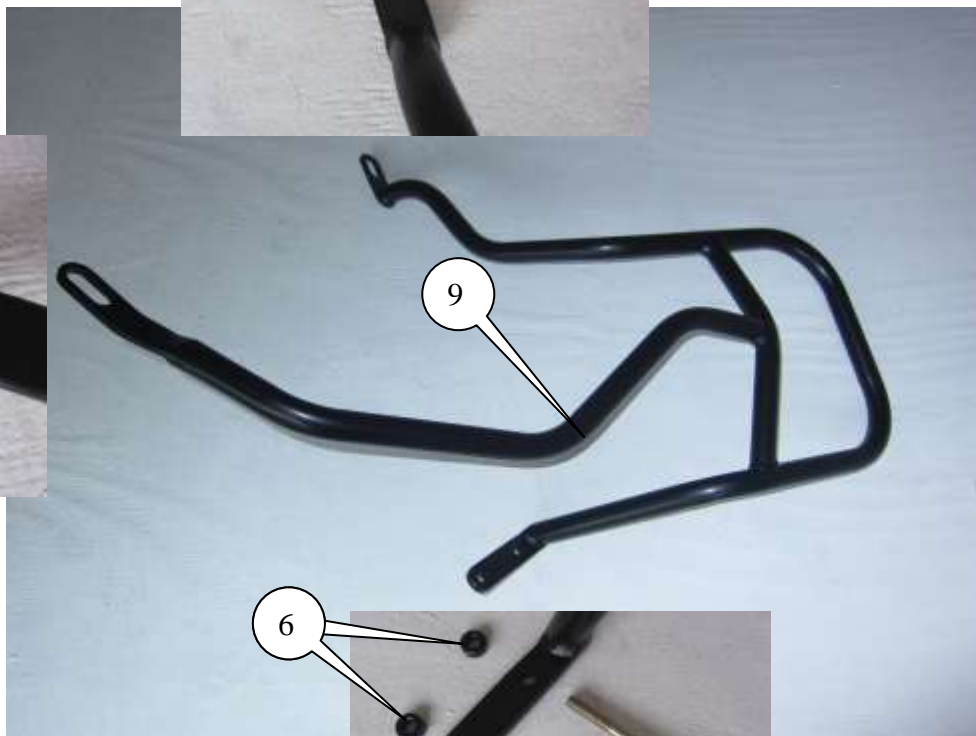
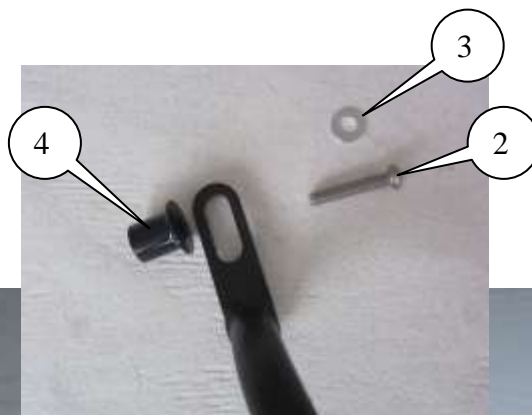
LINKE SEITE





RECHTE SEITE

27



**LIEFERUMFANG:**

- ARTIKEL 1 = ADVENTURE STURZBÜGEL LINKE SEITE (CB037) (x1)
ARTIKEL 2 = M10 x 1,25 x 60mm INBUSSCHRAUBEN (RECHTE & LINKE SEITE OBEN) (x2)
ARTIKEL 3 = M10 UNTERLEGSCHLEIBEN (x2)
ARTIKEL 4 = ABSTANDSHALTER (S0148= RECHTE & LINKE SEITE OBEN) (x2)
ARTIKEL 5 = M8 x 1,25 x 25mm INBUSSCHRAUBEN (RECHTE & LINKE SEITE UNTEN) (x4)
ARTIKEL 6 = ABSTANDSHALTER (S0299= RECHTE & LINKE SEITE UNTEN) (x4)
ARTIKEL 7 = M8 UNTERLEGSCHLEIBEN (x4)
ARTIKEL 8 = M8 x 1,25 SELBSTSICHERNDE MUTTER (FRONT BOTTOM) (x2)
ARTIKEL 9 = ADVENTURE STURZBÜGEL RECHTE SEITE (CB038) (x1)
ARTIKEL 10 = M8 x 1,25 x 100mm INBUSSCHRAUBEN (VORNE UNTEN) (x2)

SIE BENÖTIGEN FOLGENDES WERKZEUG

- Steckschlüsselsatz inkl. 10, 12 und 13mm Steckschlüssel
- Inbusschlüssel-Satz inkl. 5, 6 und 8 mm Inbusschlüssel
 - Kreuzschlitzschraubendreher
 - Drehmomentschlüssel (bis 40Nm)



Abbildung 1



Abbildung 2



Abbildung 3

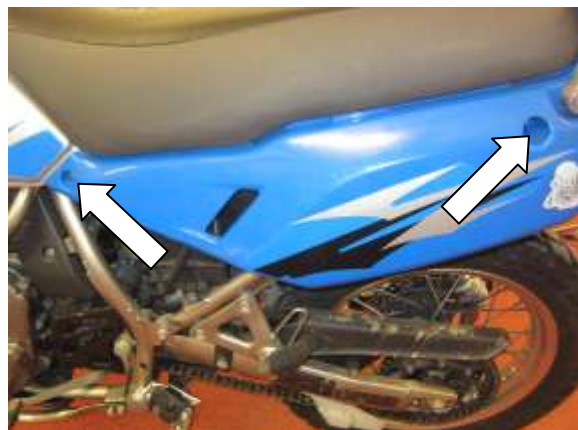


Abbildung 4



Abbildung 5



Abbildung 6



Abbildung 7



Abbildung 8



Abbildung 9



Abbildung 10



Abbildung 11



Abbildung 12



Abbildung 13



Abbildung 14



Abbildung 15



Abbildung 16



Abbildung 17



Abbildung 18



Abbildung 19



Abbildung 20

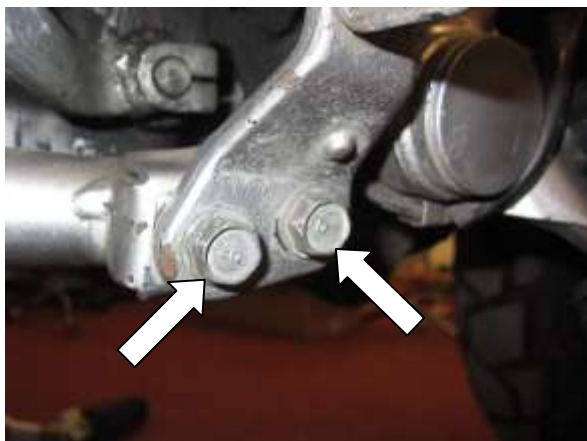


Abbildung 21

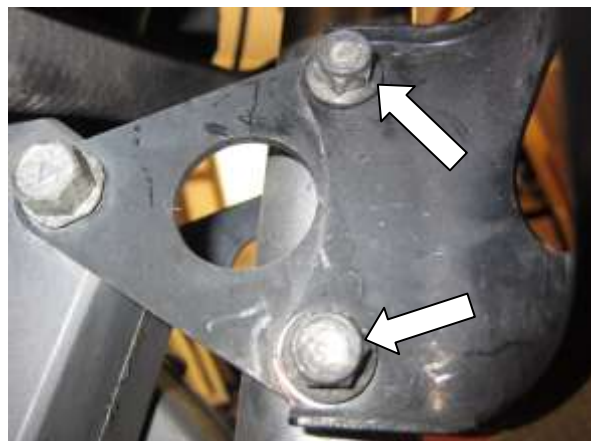


Abbildung 22



Abbildung 23



Abbildung 24



Abbildung 25



Abbildung 26



Abbildung 27



Abbildung 28



Abbildung 29



Abbildung 30



Abbildung 31



Abbildung 32

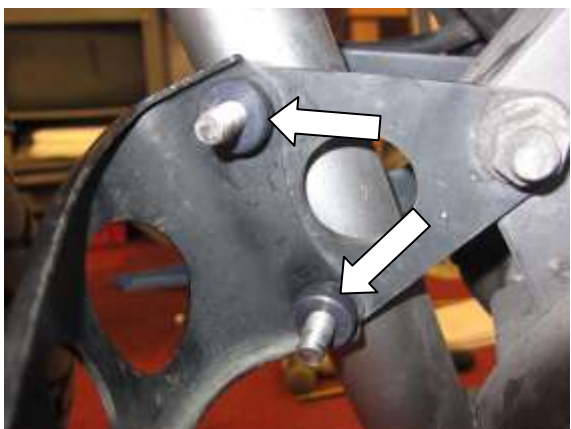


Abbildung 33



Abbildung 34



Abbildung 35



Abbildung 36



Abbildung 37



Abbildung 38

MONTAGEANLEITUNG:

- Entfernen Sie die zwei Schrauben, die in den Abbildungen 1 und 2 abgebildet sind und entfernen Sie die rechte Seitenverkleidung.
- Entfernen Sie die Schraube, die in Abbildung 3 mit einem Pfeil gekennzeichnet ist.
- Entfernen Sie die zwei Schrauben, die in Abbildung 4 abgebildet sind und entfernen Sie die linke Seitenverkleidung.
- Entfernen Sie die gekennzeichnete Schraube in Abbildung 5 und entfernen Sie den Sitz.
- Entfernen Sie die zwei Schrauben, die in Abbildung 6 gekennzeichnet sind.
- Entfernen Sie die Schrauben, die in den Abbildungen 7, 8, 9 und 10 abgebildet sind und entfernen Sie die vordere Verkleidung auf der linken Seite.
- Entfernen Sie die Schrauben, die in den Abbildungen 11, 12, 13 und 14 abgebildet sind und entfernen Sie die vordere Verkleidung auf der rechten Seite.
- Vorsichtig den Tank anheben und mit Holzklötzen abstützen (wie in Abbildung 15 abgebildet), um Zugang zu den in Abbildungen 23 und 29 abgebildeten Schrauben zu ermöglichen.



- Entfernen Sie die Schrauben, die in den Abbildungen 16, 17, 18 und 19 mit Pfeilen markiert sind und entfernen Sie den Motorschutz.
- Entfernen Sie die zwei Schrauben in Abbildung 20 und entfernen Sie die Fußraste.
- Entfernen Sie die zwei Schrauben in Abbildung 21 und entfernen Sie die Fußraste.
- Entfernen Sie die zwei Mutter in Abbildung 22 (die Schraube noch nicht entfernen).
- Entfernen Sie die Schraube, die in Abbildung 23 gekennzeichnet ist – auf der rechten Seite.
- Zwei der kleineren Abstandshalter (Artikel 6) an den Originalschrauben wie abgebildet anbringen – siehe Abbildung 24.
- Führen Sie einen der größeren Abstandshalter (Artikel 4) in die Rahmenvertiefung ein – siehe Abbildung 25.
- Positionieren Sie den rechten Adventure Sturzbügel (Artikel 9) wie in Abbildung B abgebildet.
- Eine M10 Unterlegscheibe (Artikel 3) an einer der M10 Inbusschrauben (Artikel 2) anbringen und in die oberste Öffnung am Adventure Sturzbügel einführen, wie in Abbildung 25 abgebildet (noch nicht festziehen).
- Stellen Sie sicher, dass die vordere Montageplatte an den Originalschrauben fixiert ist – siehe Abbildung 27.
- Zwei der längeren Inbusschrauben (Artikel 10) mit M8 Unterlegscheiben (Artikel 7) versehen und die originalen Montageschrauben mit diesen Inbusschrauben vorne durchdrücken.
- Stellen Sie sicher, dass die untere Montagehalterung wie in Abbildung 26 ausgerichtet ist.
- Führen Sie zwei der kürzeren M8 Schrauben (Artikel 5) durch die Originalfußrasten in die untere Montagehalterung ein – siehe Abbildung 28 – danach die oberen und unteren Schrauben festschrauben.
- Entfernen Sie die Schraube, die in Abbildung 29 mit einem Pfeil markiert ist (auf der linken Seite des Motorrades).
- Zwei der kleineren Abstandshalter (Artikel 6) an den neuen Schrauben anbringen – siehe Abbildung 33.
- Einen der größeren Abstandshalter (Artikel 4) in der Rahmenvertiefung anbringen - siehe Abbildung 30.
- Positionieren Sie den linken Adventure Sturzbügel (Artikel 1) wie in Abbildung A abgebildet.
- Eine M10 Unterlegscheibe (Artikel 3) an einer der M10 Inbusschrauben (Artikel 2) anbringen und in die oberste Öffnung am Adventure Sturzbügel einführen, wie in Abbildung 30 abgebildet (noch nicht festziehen).
- Stellen Sie sicher, dass die vordere Montageplatte an den neuen Schrauben fixiert ist – siehe Abbildung 32.
- Die neuen Schrauben, die von der rechten Seite angebracht wurden, mit zwei M8 Unterlegscheiben (Artikel 7) und M8 selbstsichernden Muttern (Artikel 8) versehen und befestigen.
- Stellen Sie sicher, dass die untere Montagehalterung wie in Abbildung 31 ausgerichtet ist.
- Führen Sie zwei der kürzeren M8 Schrauben (Artikel 5) durch die Originalfußrasten in die untere Montagehalterung ein – siehe Abbildung 34 – danach die oberen und unteren Schrauben festschrauben.
- Ziehen Sie die zwei Mutter an der vorderen Montagehalterung fest.
- Vorsichtig den Tank herabsetzen, wieder anbringen und die zwei Schrauben, die in Abbildung 6 mit Pfeilen markiert sind, befestigen.
- Beide Adventure Sturzbügel mit Tüchern/Stofflappen bedecken, um sie bei der Montage der Seitenverkleidungen zu schützen – siehe Abbildungen 35, 36, 37 und 38.
- Beide Seitenverkleidungen vorsichtig und wie ursprünglich anbringen.
- Montieren Sie den Motorschutz wieder wie ursprünglich.



AUSGABE 1 26/03/2014 (NSY)

36

CONSUMER NOTICE

The catalogue description and any exhibition of samples are only broad indications of the Products and R&G may make design changes which do not diminish their performance or visual appeal and supplying them in such state shall conform to the order. The Buyer acknowledges no representation or warranty (other than as to title) has been given or will apply to the Products other than those in R&G's order or confirmation and the Buyer confirms it has chosen the Products as being of merchantable quality and suitable for its particular purposes. Where R&G fits the Products or undertakes other services it shall exercise reasonable skill and care and rectify any fault free of charge unless the workmanship has been disturbed. The Buyer is responsible for ensuring that the warranty on the motorcycle is not affected by the fitting of the Products. On return of any defective Products R&G shall at its option either supply a replacement or refund the purchase money but shall not be liable if the Products have been modified or used or maintained otherwise than in accordance with R&G's or manufacturer's instructions and good engineering practice or if the defect arises from accident or neglect. Other than identified above and subject to R&G not limiting its liability for causing death and personal injury, it shall not be liable for indirect or consequential loss and otherwise its liability shall be limited to the amounts paid by the Buyer for the Products or the fitting or service concerned. These terms do not affect the Buyer's statutory rights.

R&G RACING RETURNS POLICY (NON-FAULTY GOODS)

Returns must be pre-authorised (if not pre-authorised the return will be rejected). Goods may only be returned direct to us if they were purchased direct from us (customer must prove if necessary). Otherwise to be returned to original vendor. Goods must be in re-sellable condition, in the opinion of R&G Racing. All returns are subject to a 25% restocking and handling fee (25% of the gross value exc. P&P – at the prevailing price at time of purchase). The customer must pay any and all carriage charges. No returns of discontinued products, unless within 14 days of purchase. This policy does not affect your statutory rights and does not refer to faulty goods.

R&G Racing

Unit 1, Shelley's Lane, East Worldham, Alton, Hampshire, GU34 3AQ

Tel: +44 (0)1420 89007 Fax: +44 (0)1420 87301 www.rg-racing.com Email: info@rg-racing.com